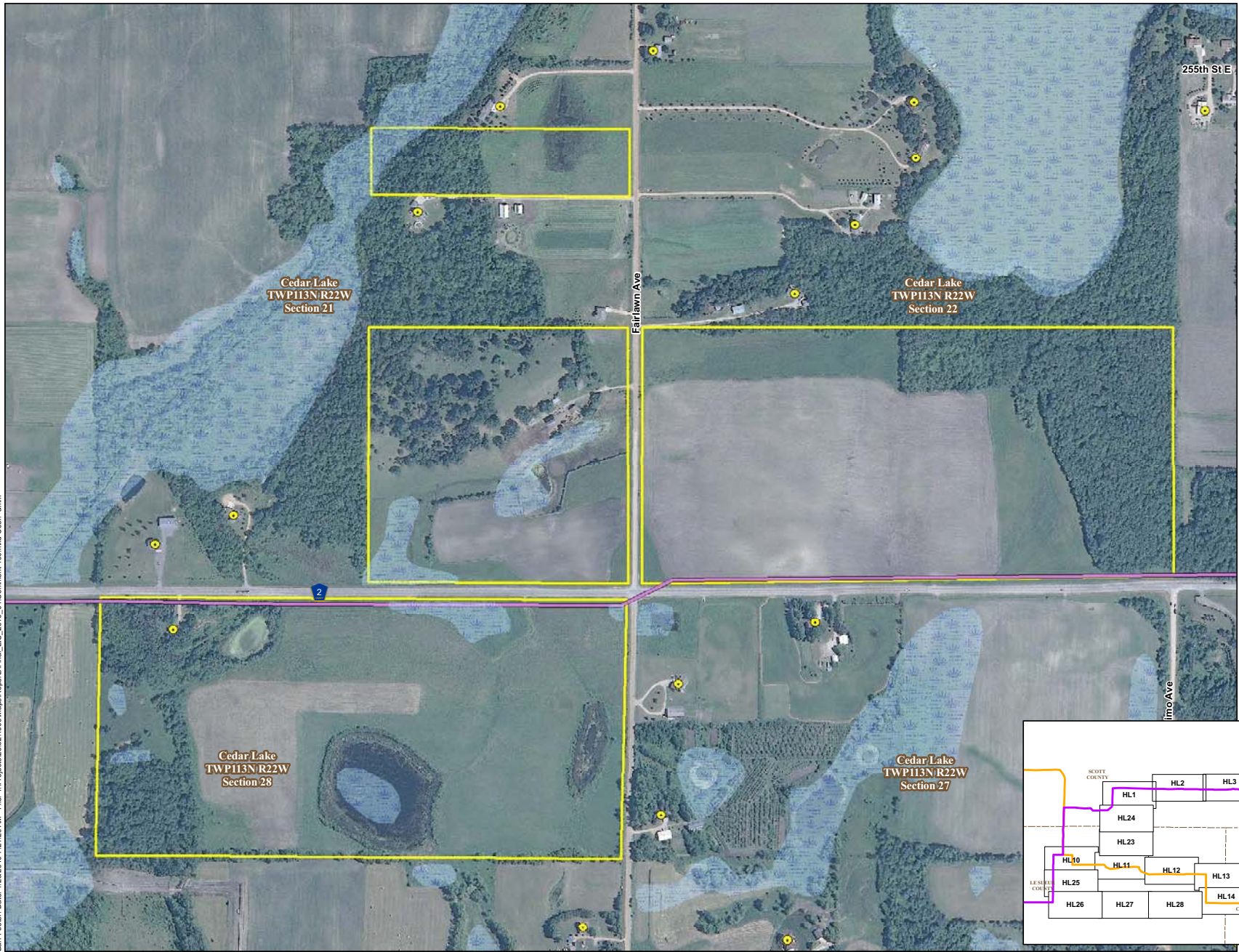


Bar Footer: Date: 1/25/2010 7:24:29 AM File: I:\Projects\23621009\Mapa\Reports\Final_EIS_2010_01\Comment 190.mxd User: amm

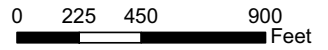


Original Alignments

- Preferred Route
- Alternate Route

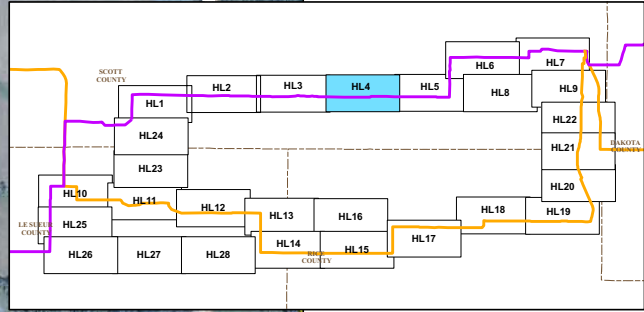
Additional Alternative Routes

- Variation on Preferred Route
- Variation on Alternate Route
- Variation on Both
- Wetland (NWI)
- Sirek Properties
- Residence

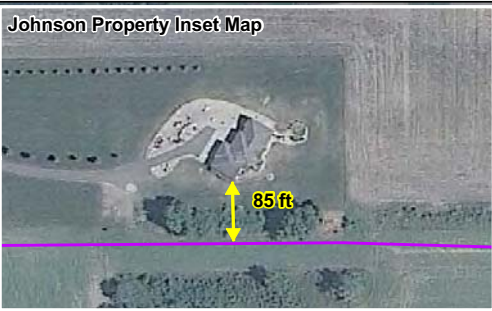
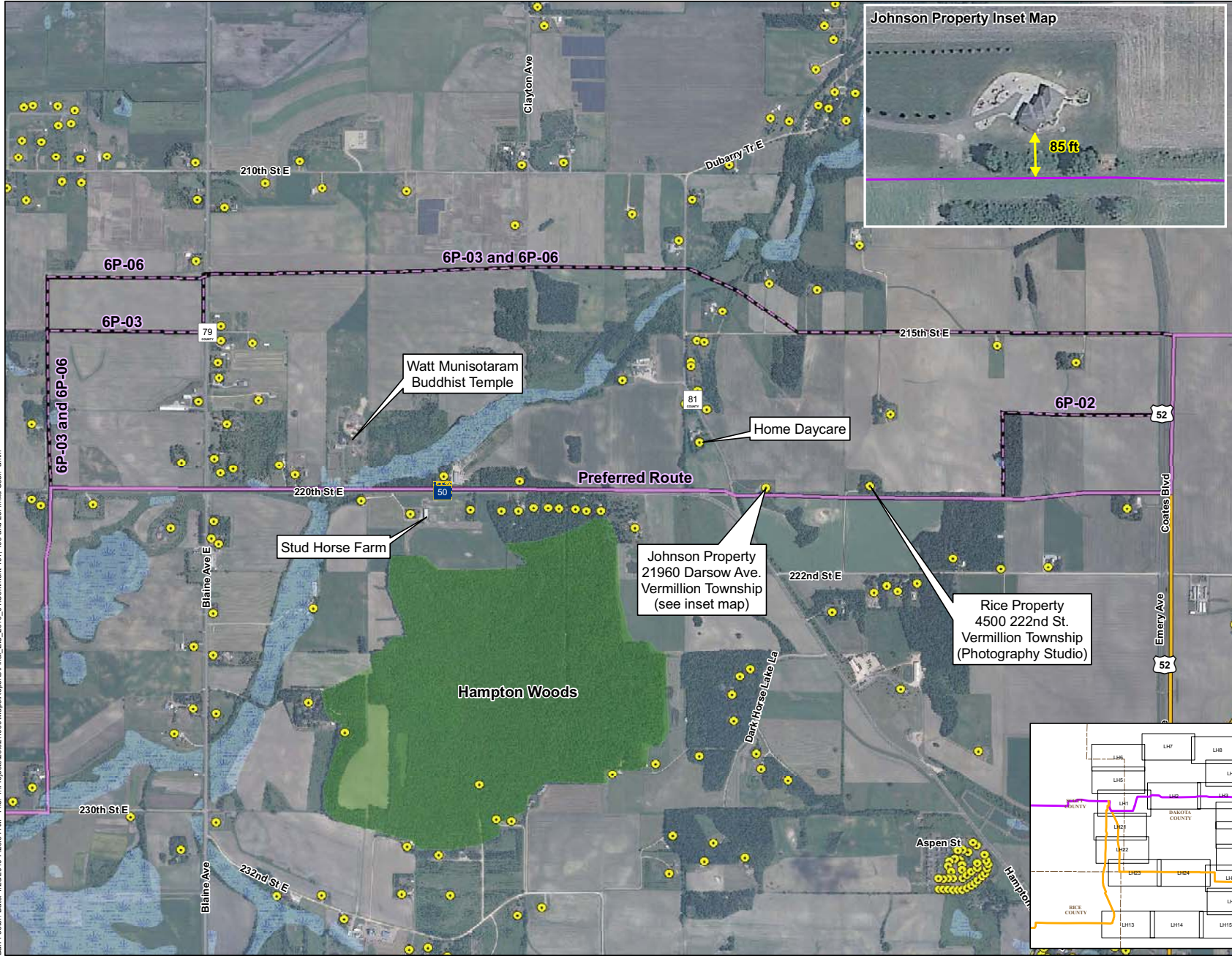


FEIS ID#190
COMMENT RESPONSE

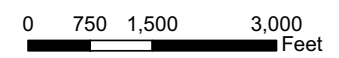
Segment 5
Brookings to Hampton EIS



Barr Footer: Date: 1/25/2010 7:23:34 AM File: I:\Projects\2262\1009\MapReports\Final_EIS_2010_01\Comment 191_193 and 227.mxd User: amm

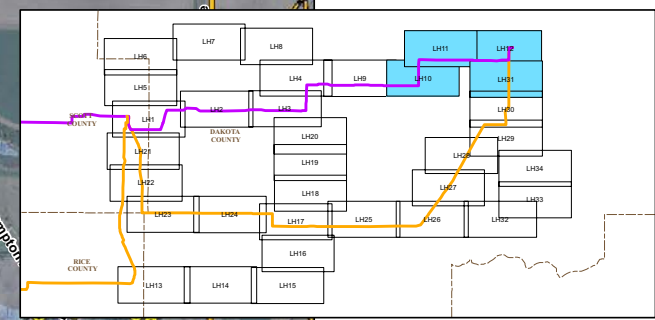


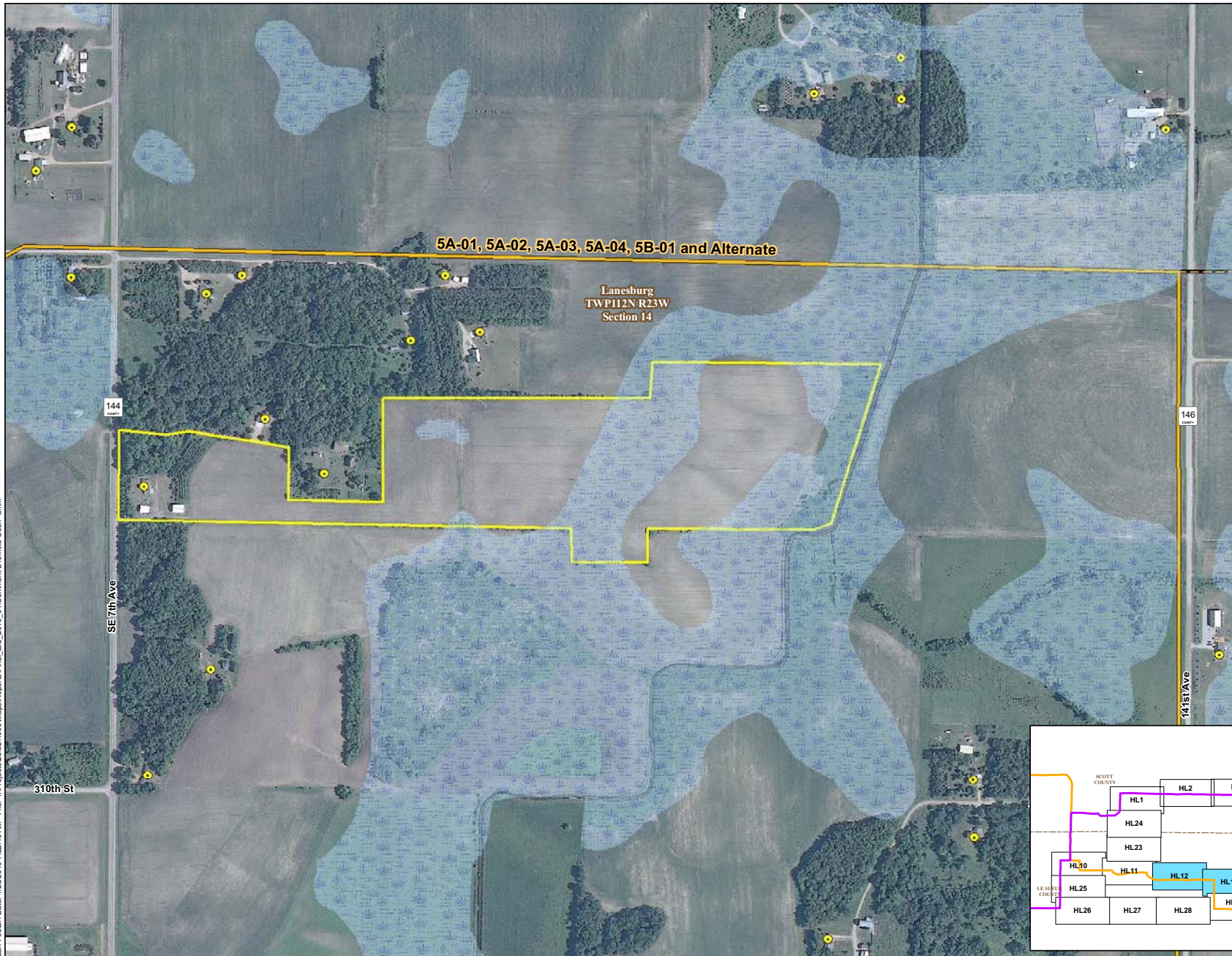
- Original Alignments**
- Preferred Route
 - Alternate Route
- Additional Alternative Routes**
- Variation on Preferred Route
 - Variation on Alternate Route
 - Variation on Both
- Wetland (NW1)
- Residence



FEIS ID#191
COMMENT RESPONSE

Segment 6
Brookings to Hampton EIS



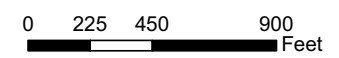


Original Alignments

- Preferred Route
- Alternate Route

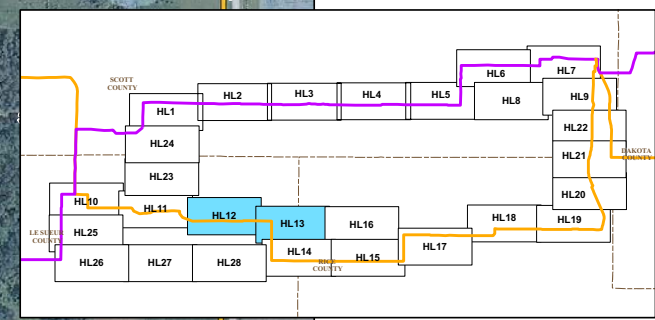
Additional Alternative Routes

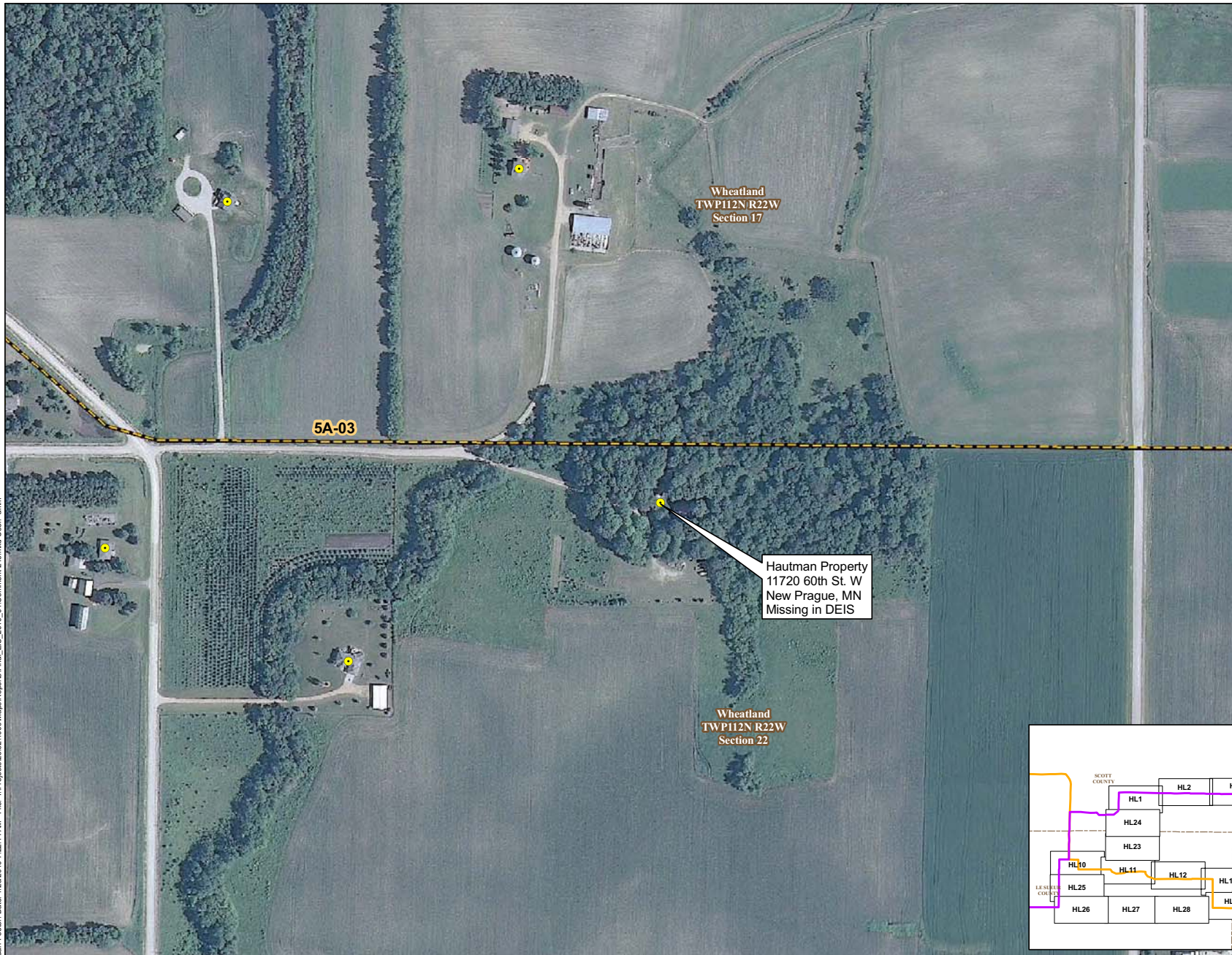
- Variation on Preferred Route
- Variation on Alternate Route
- Variation on Both
- Wetland (NW1)
- Approximate James Dietz Property
- Residence



FEIS ID#210
COMMENT RESPONSE

Segment 5
Brookings to Hampton EIS



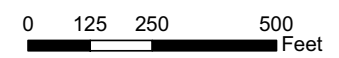


Original Alignments

- Preferred Route
- Alternate Route

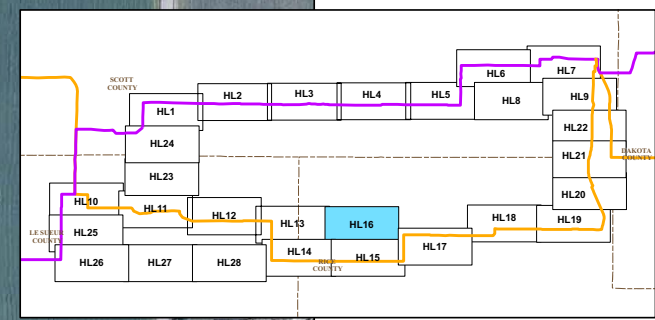
Additional Alternative Routes

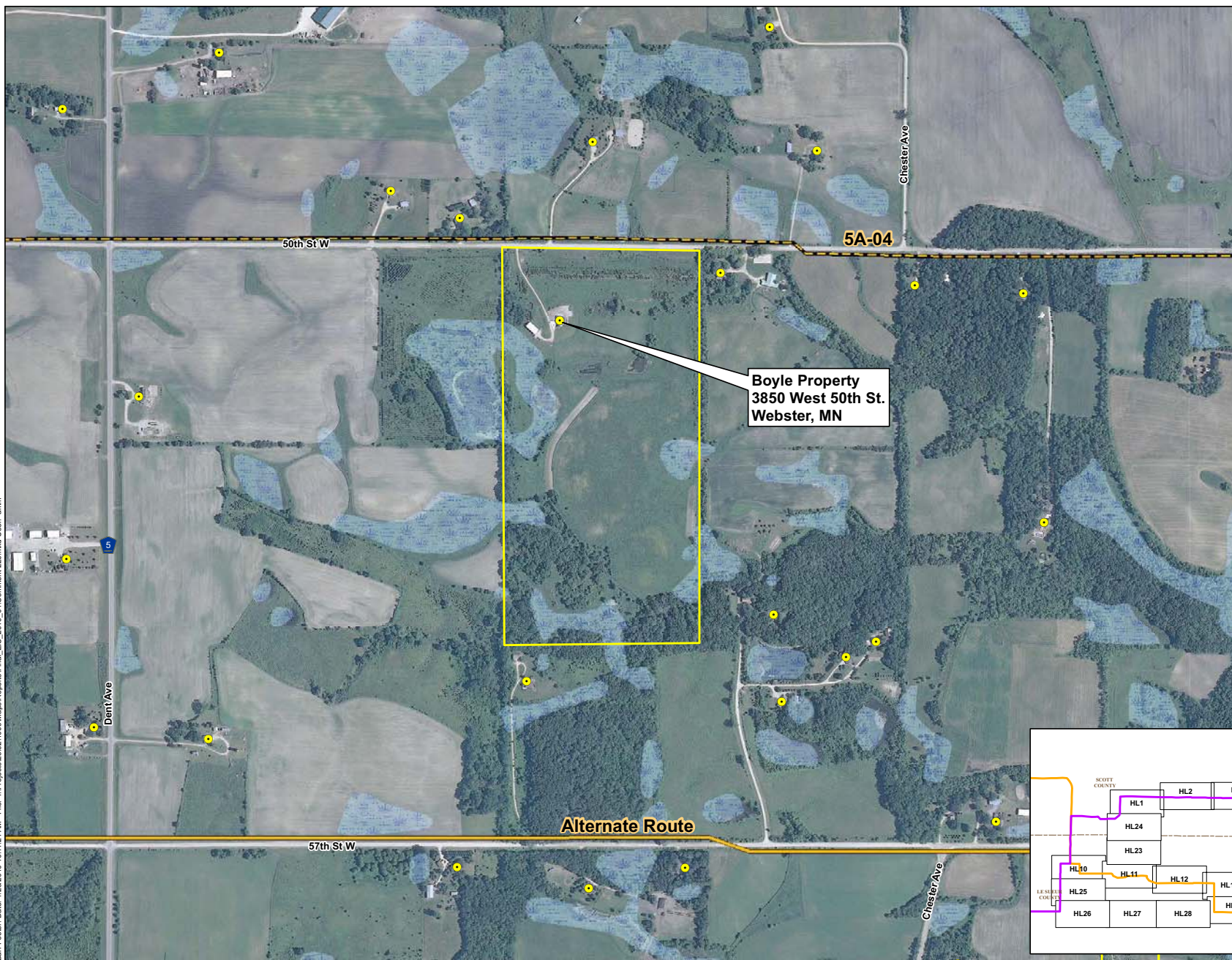
- Variation on Preferred Route
- Variation on Alternate Route
- Variation on Both
- Residence



FEIS ID#215
COMMENT RESPONSE

Segment 5
Brookings to Hampton EIS





Original Alignments

- Preferred Route
- Alternate Route

Additional Alternative Routes

- Variation on Preferred Route
- Variation on Alternate Route
- Variation on Both

Wetland (NWI)

Residence

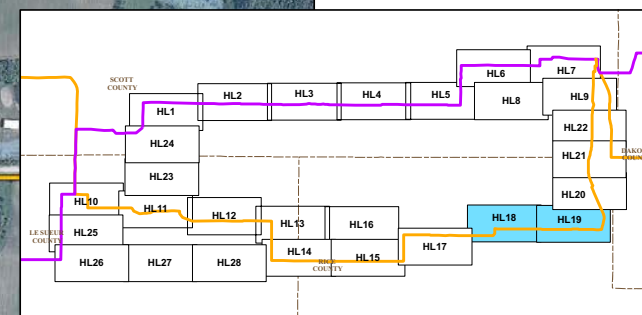
Approximate Boyle Property

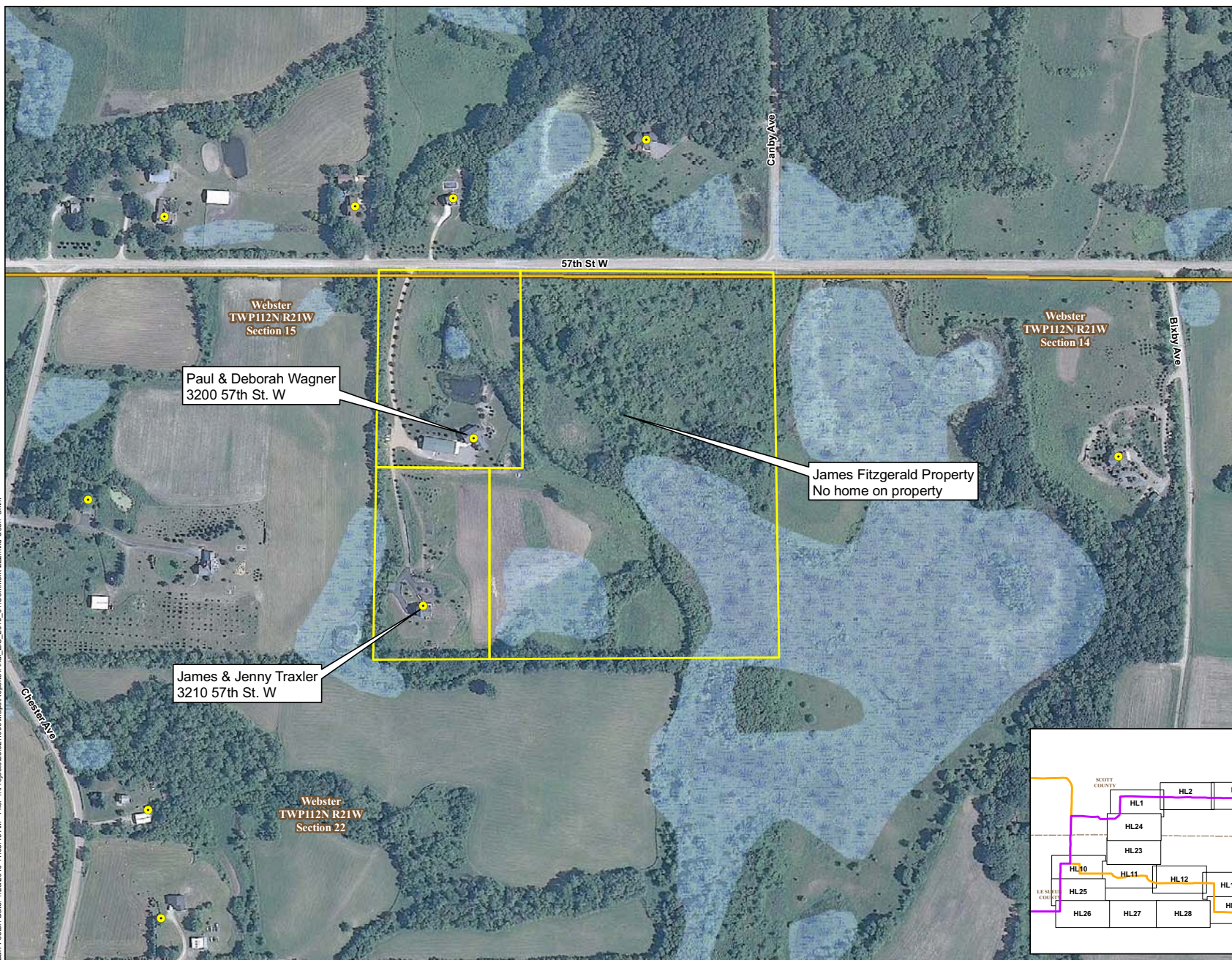


0 300 600 1,200
Feet

FEIS ID#220
COMMENT RESPONSE

Segment 5
Brookings to Hampton EIS





Original Alignments

- Preferred Route
- Alternate Route

Additional Alternative Routes

- Variation on Preferred Route
- Variation on Alternate Route
- Variation on Both

Wetland (NWI)

Residence

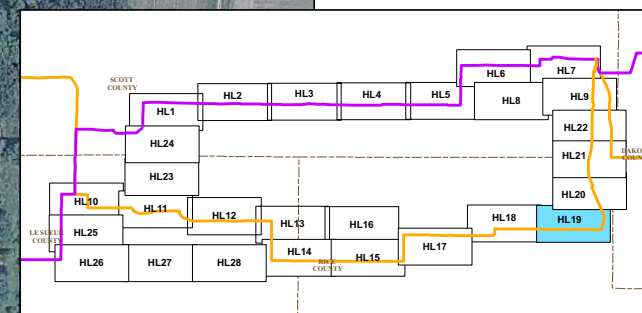
Approximate Property Boundaries



0 150 300 600 Feet

FEIS ID#222
COMMENT RESPONSE

Segment 5
Brookings to Hampton EIS





Original Alignments

- Preferred Route
- Alternate Route

Additional Alternative Routes

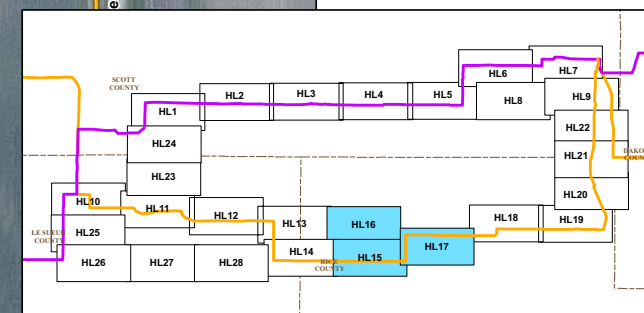
- Variation on Preferred Route
- Variation on Alternate Route
- Variation on Both
- Wetland (NWI)
- Residence

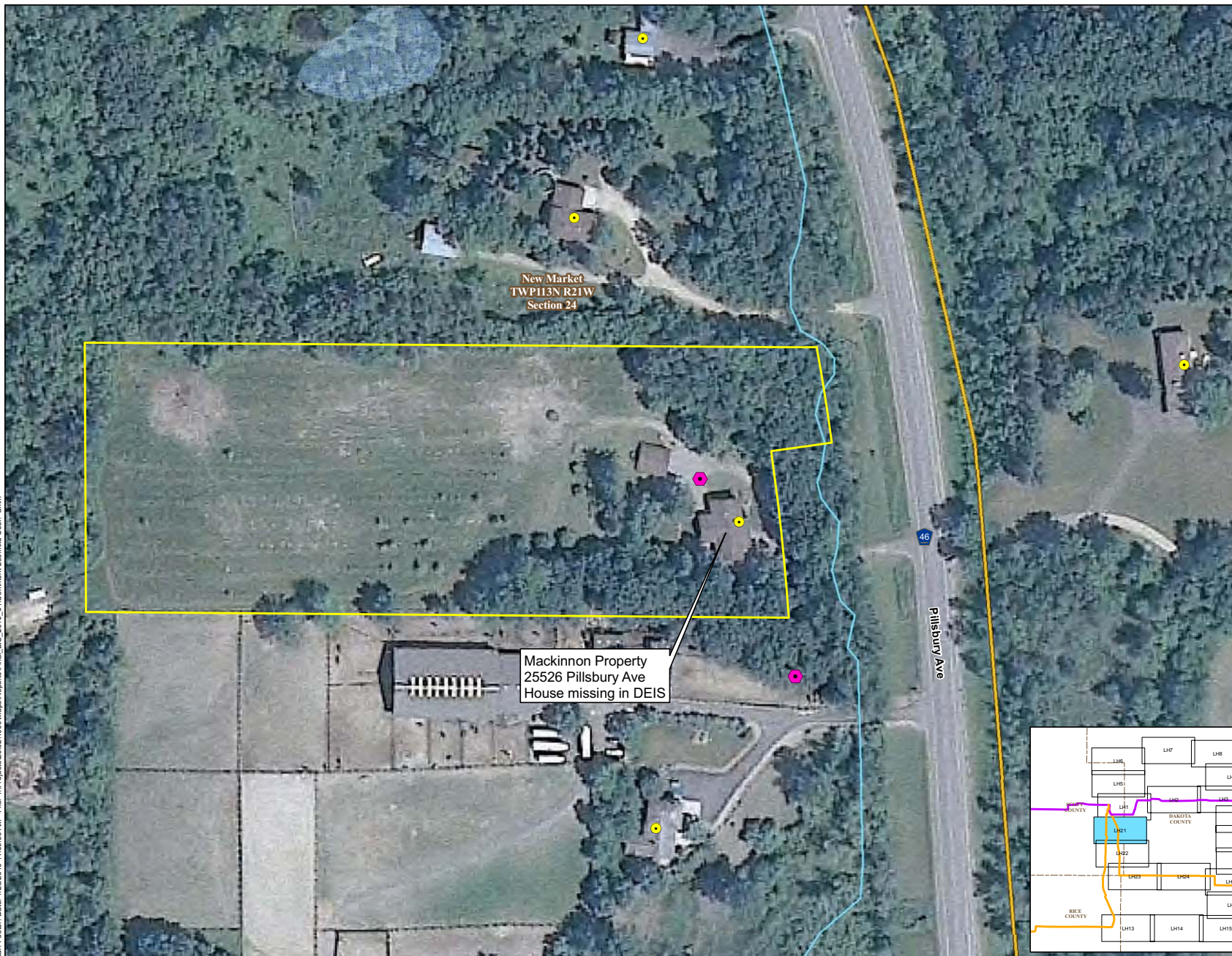


0 150 300 600
Feet

FEIS ID#224
COMMENT RESPONSE

Segment 5
Brookings to Hampton EIS





Original Alignments

- Preferred Route
- Alternate Route

Additional Alternative Routes

- Variation on Preferred Route
- Variation on Alternate Route
- Variation on Both

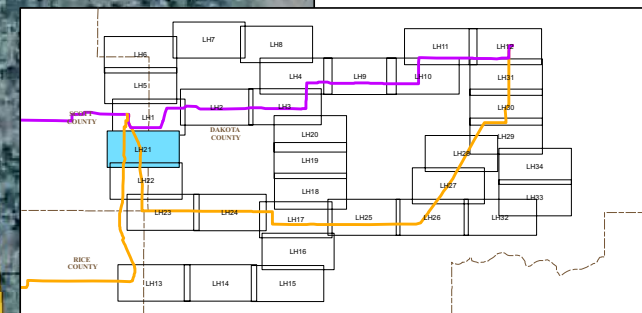
- Wetland (NWI)
- Residence
- Approximate Mackinnon Property
- Well - County Well Index
- DNR 24k Streams

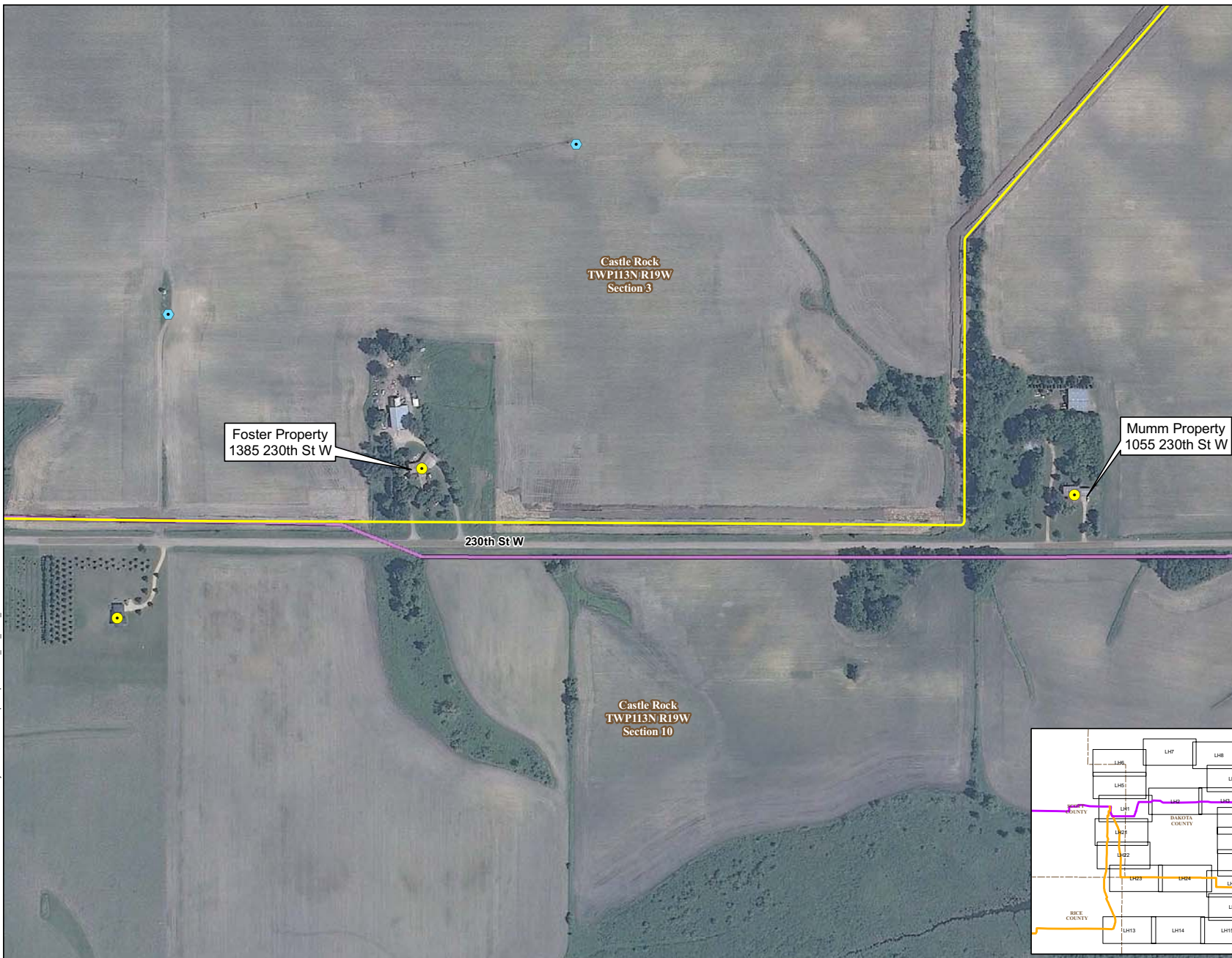


0 50 100 200 Feet

FEIS ID#239
COMMENT RESPONSE

Segment 6
Brookings to Hampton EIS





Original Alignments

- Preferred Route
- Alternate Route

Additional Alternative Routes

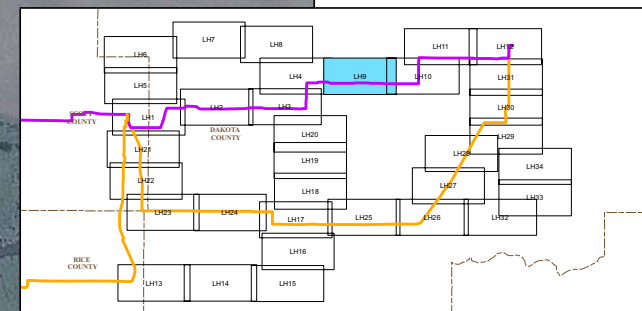
- Variation on Preferred Route
- Variation on Alternate Route
- Variation on Both
- Residence
- Center Pivot Irrigation
- MinnCan Pipeline

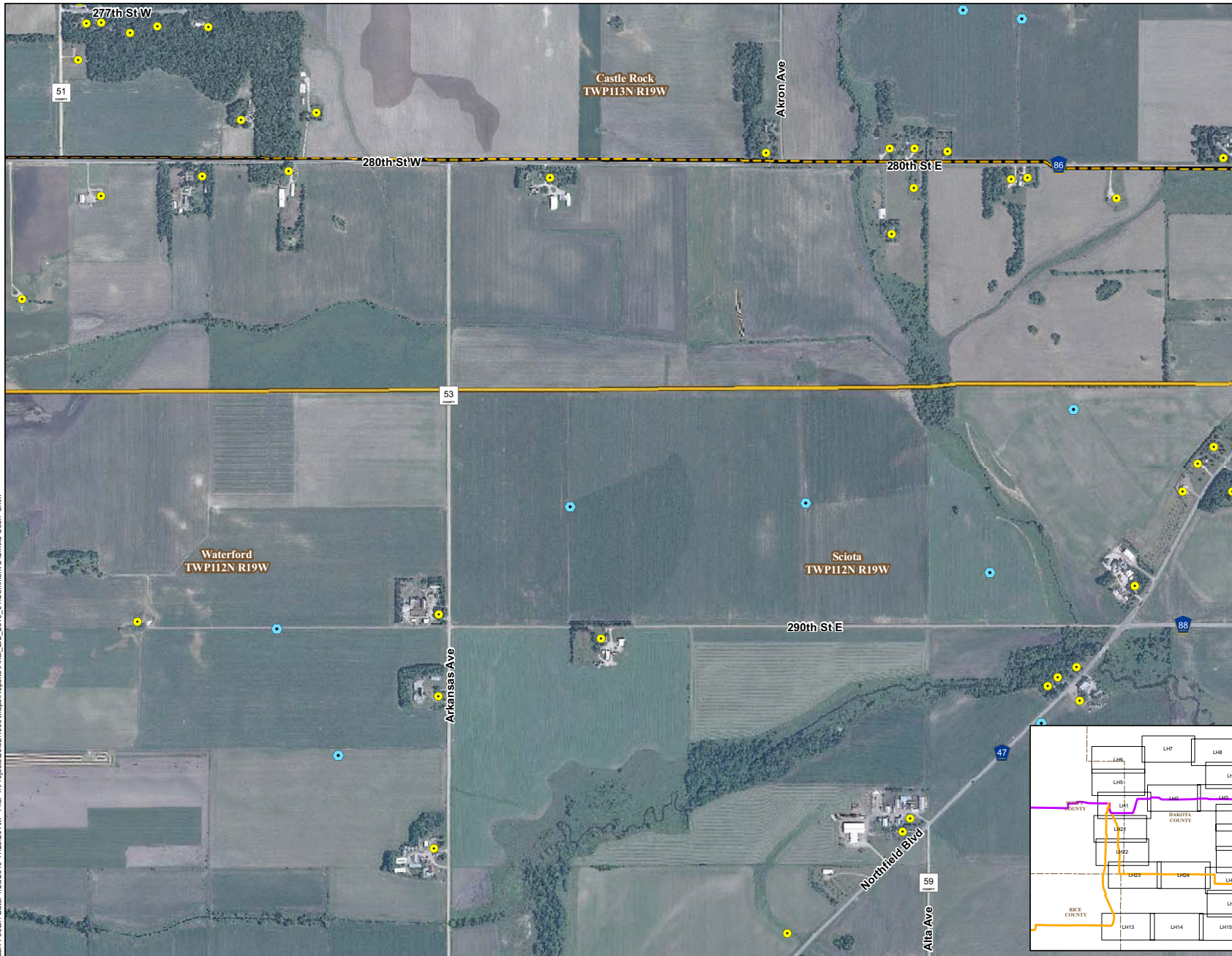


0 150 300 600
Feet

FEIS ID#241
COMMENT RESPONSE

Segment 6
Brookings to Hampton EIS





Original Alignments

- Preferred Route
- Alternate Route

Additional Alternative Routes

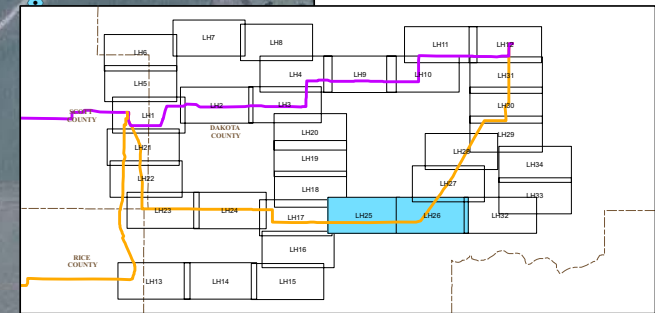
- Variation on Preferred Route
- Variation on Alternate Route
- Variation on Both
- Residence
- Center Pivot Irrigation



0 500 1,000 2,000 Feet

FEIS ID#242
COMMENT RESPONSE

Segment 6
Brookings to Hampton EIS





Original Alignments

- Preferred Route
- Alternate Route

Additional Alternative Routes

- Variation on Preferred Route
- Variation on Alternate Route
- Variation on Both

Existing Transmission Lines

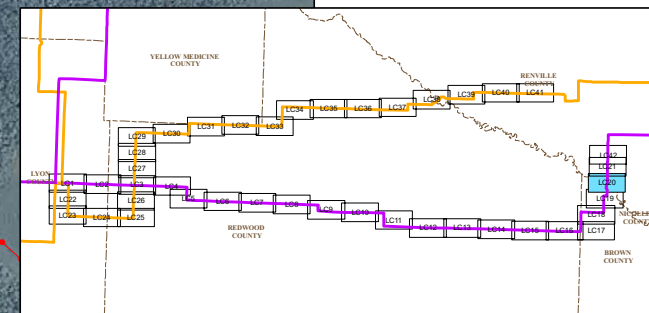
- Existing 69kV Line
- Existing 115kV Line
- Existing 345kV Line
- Residence



0 125 250 500
Feet

FEIS ID#252
COMMENT RESPONSE

Segment 3
Brookings to Hampton EIS





Original Alignments

- Preferred Route
- Alternate Route

Additional Alternative Routes

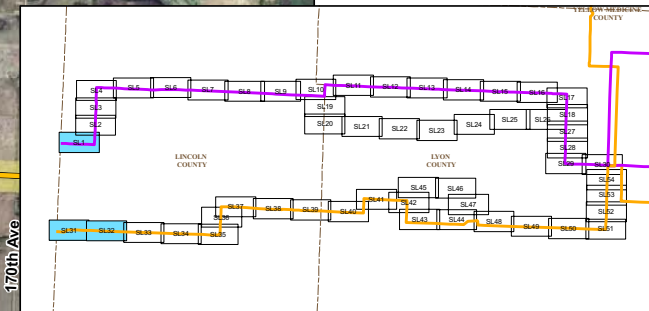
- Variation on Preferred Route
- Variation on Alternate Route
- Variation on Both
- Applicants Requested Route Width

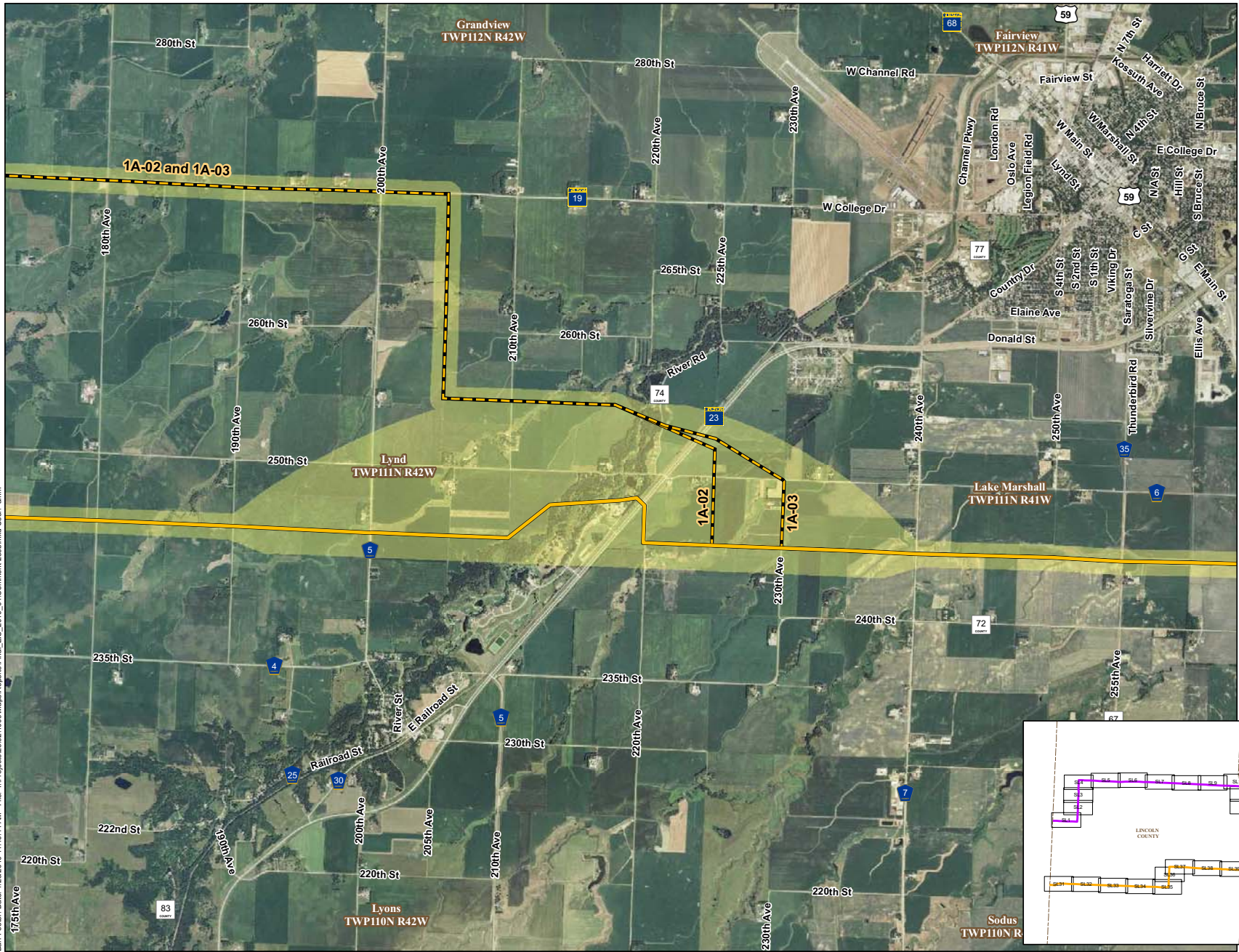


0 2,000 4,000 8,000
Feet

FEIS ID#255a
(South Dakota Border)
COMMENT RESPONSE

Segment 1
Brookings to Hampton EIS



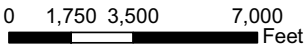


Original Alignments

- Preferred Route
- Alternate Route

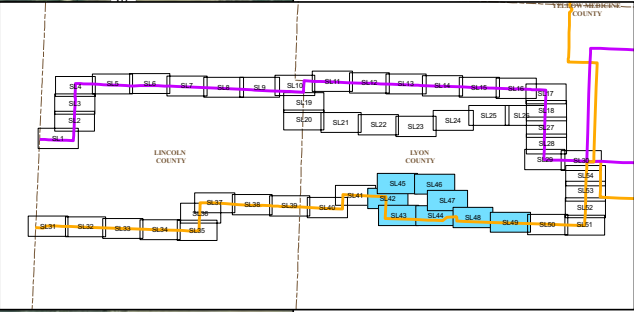
Additional Alternative Routes

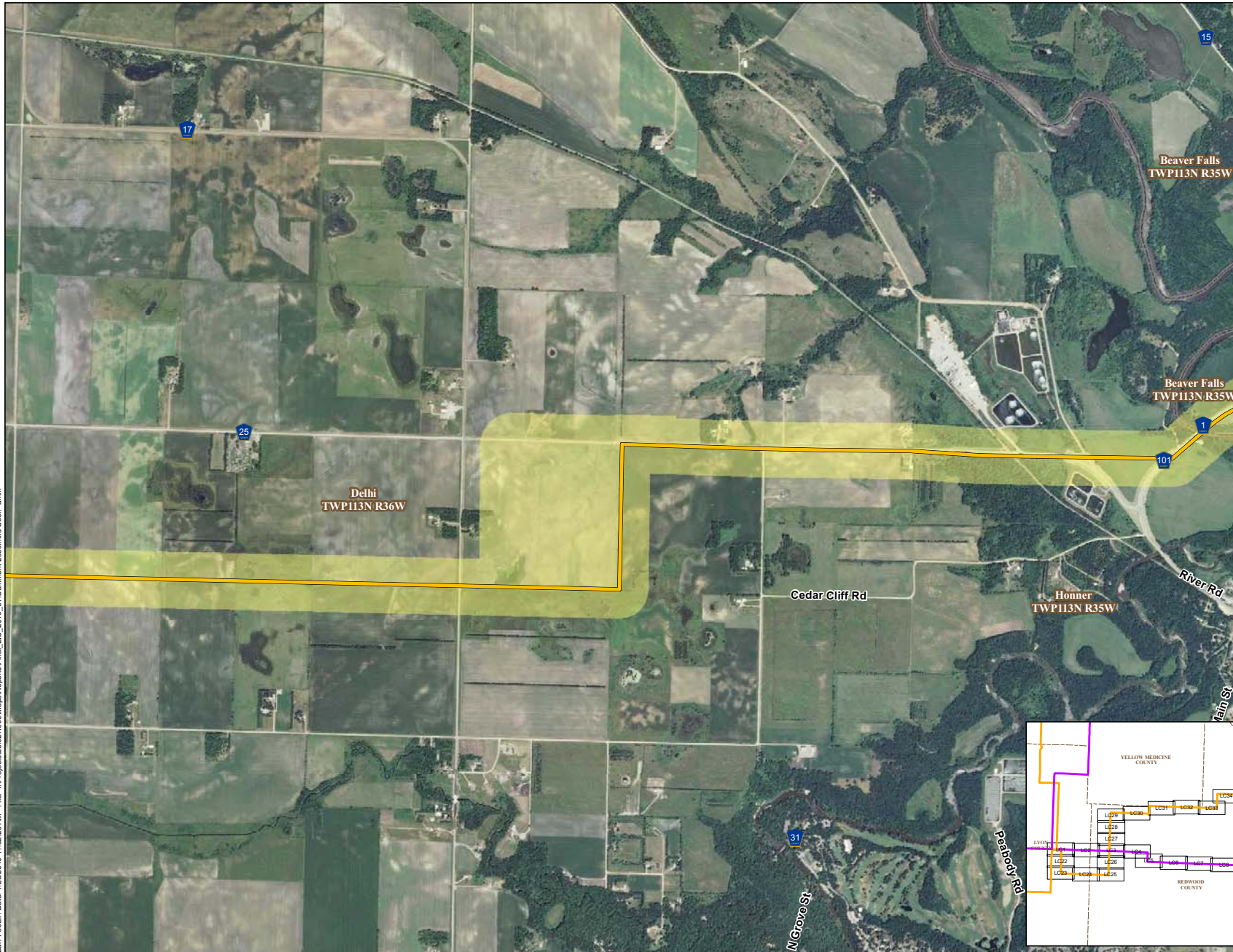
- Variation on Preferred Route
- Variation on Alternate Route
- Variation on Both
- Applicants Requested Route Width



FEIS ID#255b
(South of Marshall - Lynd Area)
COMMENT RESPONSE

Segment 1
Brookings to Hampton EIS





Original Alignments

- Preferred Route
- Alternate Route

Additional Alternative Routes

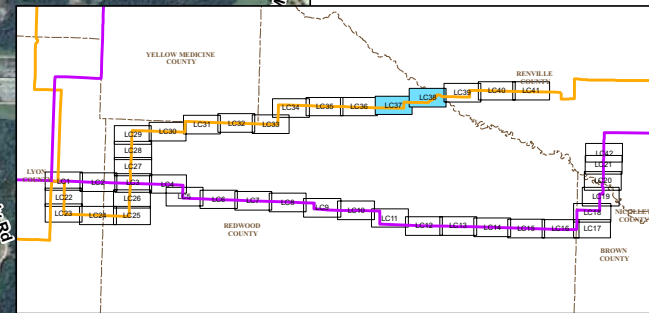
- Variation on Preferred Route
- Variation on Alternate Route
- Variation on Both
- Applicants Requested Route Width

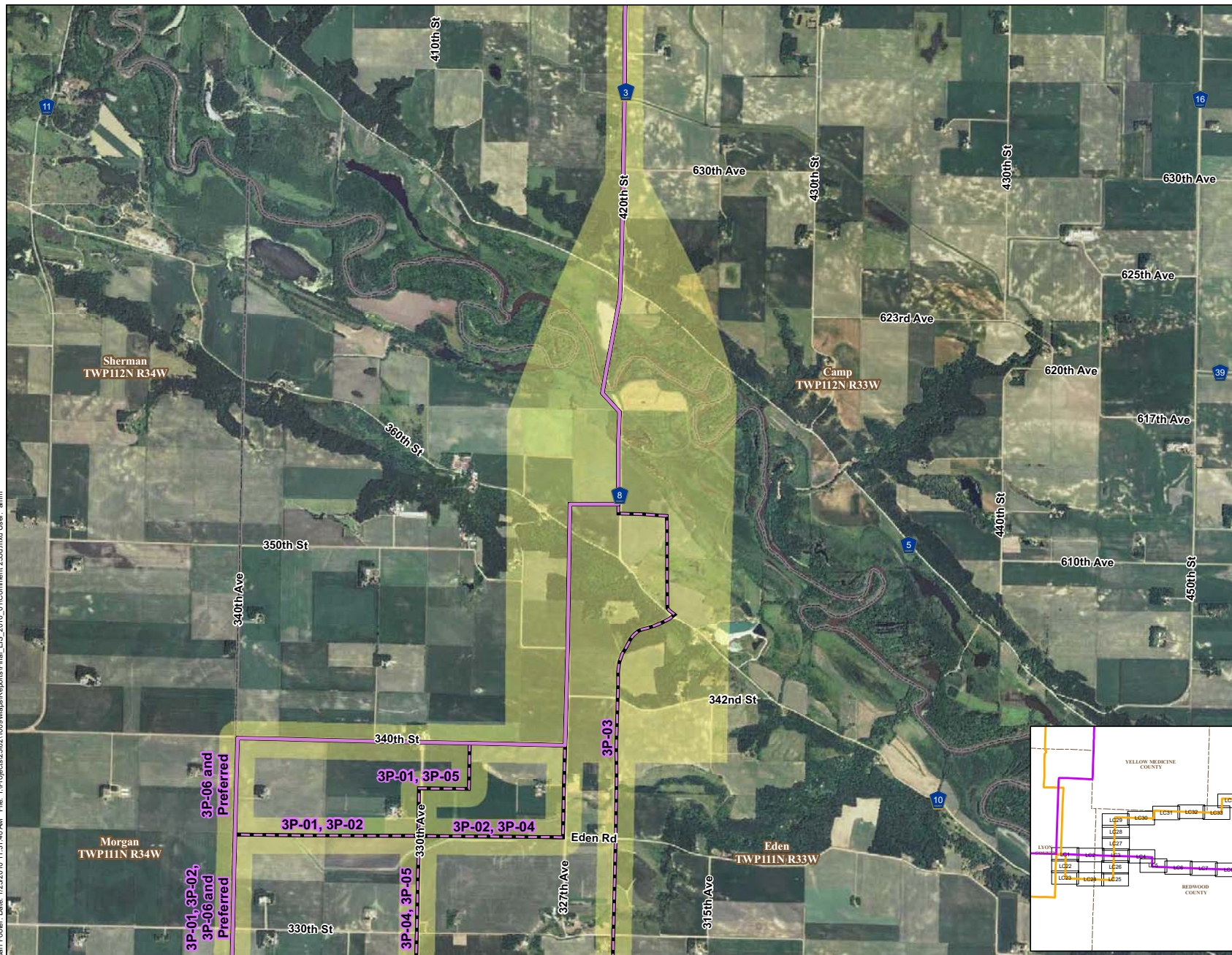


0 800 1,600 3,200
Feet

FEIS ID#255c
(Northwest of Redwood Falls)
COMMENT RESPONSE

Segment 3
Brookings to Hampton EIS





Original Alignments

- Preferred Route
- Alternate Route

Additional Alternative Routes

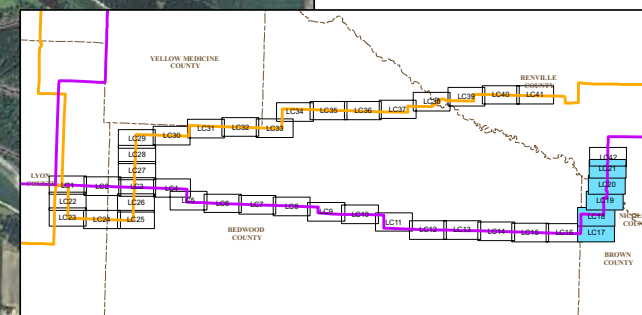
- Variation on Preferred Route
- Variation on Alternate Route
- Variation on Both
- Applicants Requested Route Width

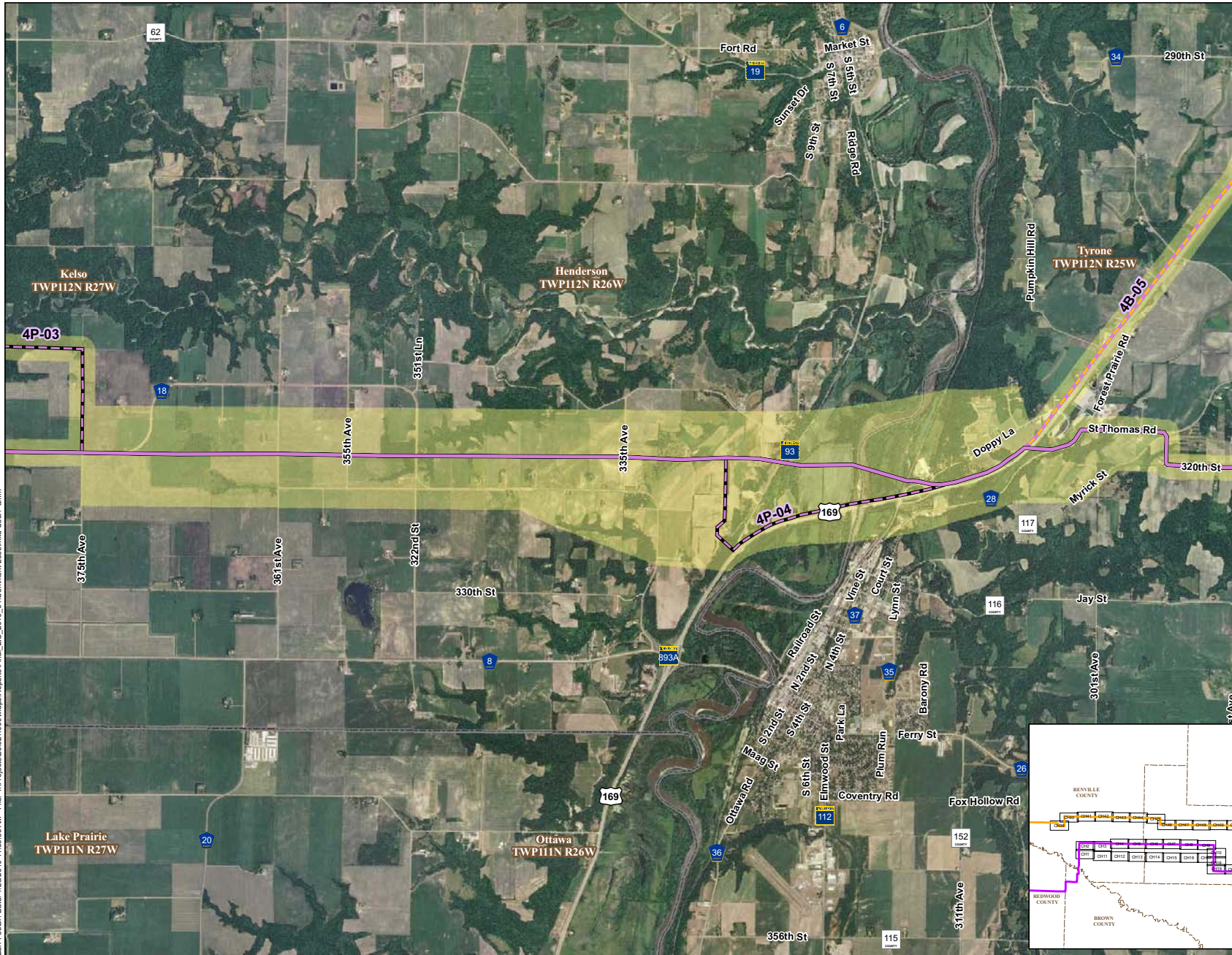


0 1,250 2,500 5,000
Feet

FEIS ID#255d
(South of Franklin)
COMMENT RESPONSE

Segment 3
Brookings to Hampton EIS



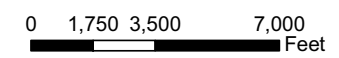


Original Alignments

- Preferred Route
- Alternate Route

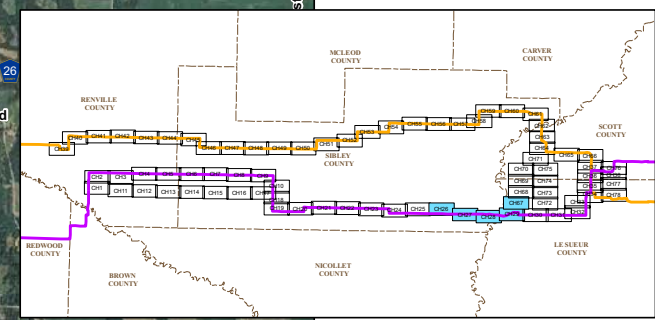
Additional Alternative Routes

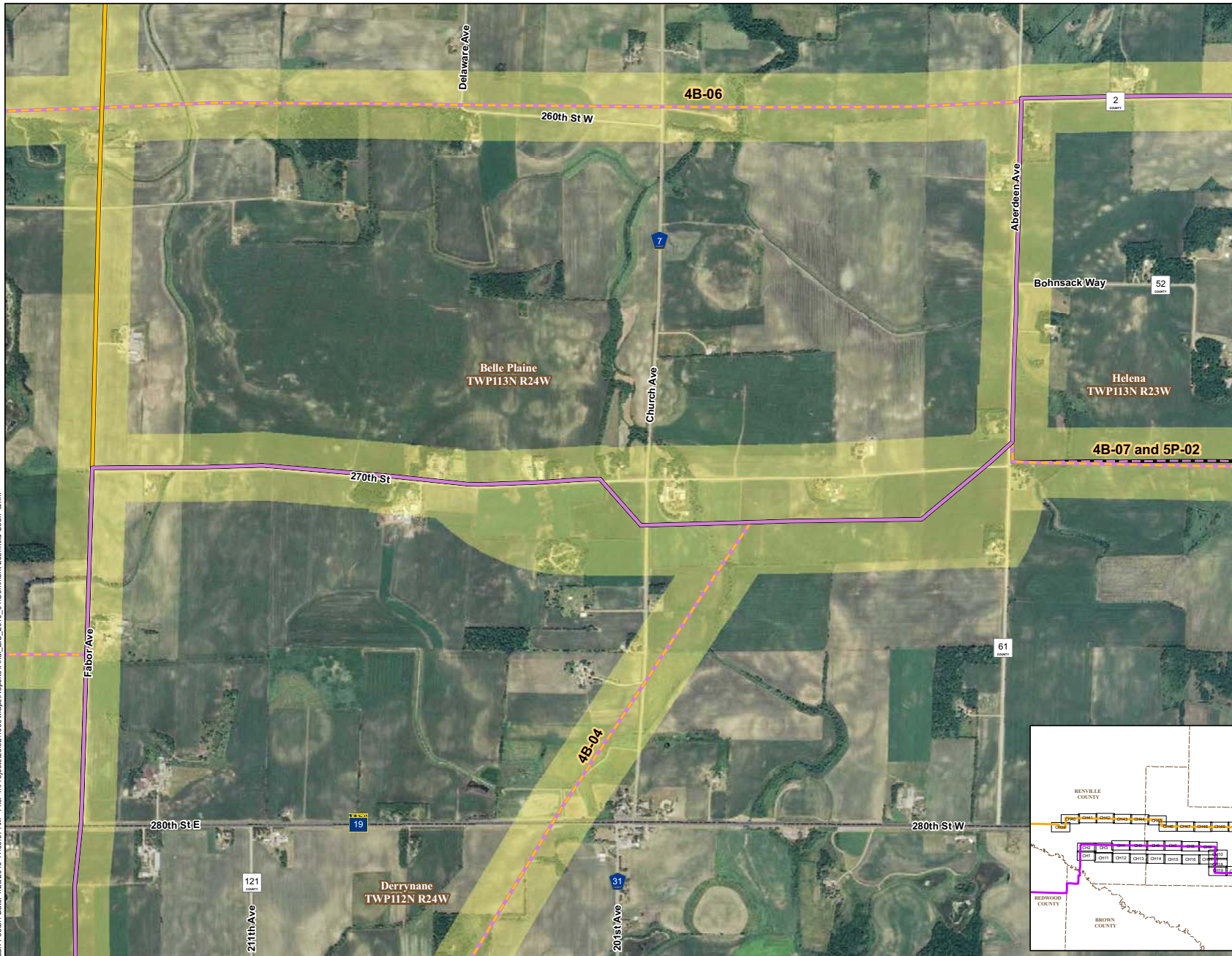
- Variation on Preferred Route
- Variation on Alternate Route
- Variation on Both
- Applicants Requested Route Width



FEIS ID#255e
(Hwy 169 Crossing - Le Sueur)
COMMENT RESPONSE

Segment 4
Brookings to Hampton EIS





Original Alignments

- Preferred Route
- Alternate Route

Additional Alternative Routes

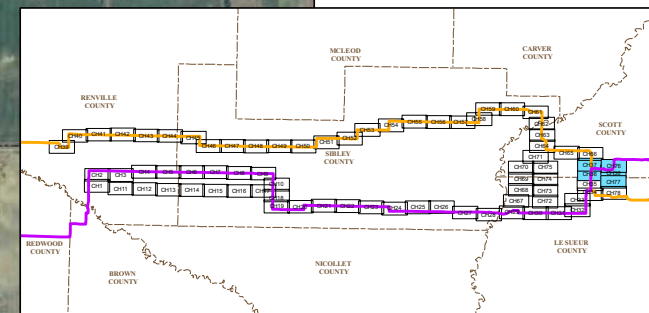
- Variation on Preferred Route
- Variation on Alternate Route
- Variation on Both
- Applicants Requested Route Width

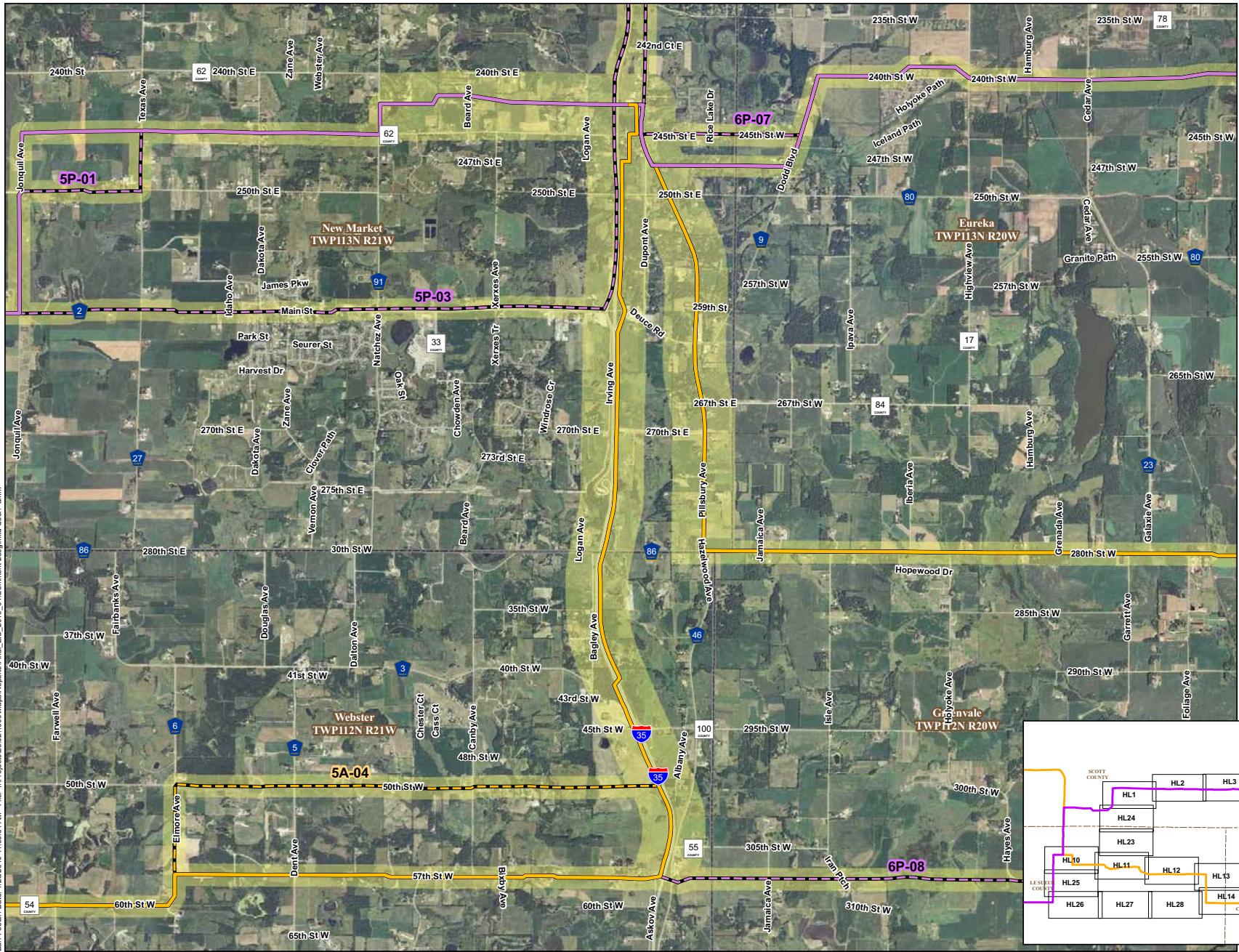


0 0.125 0.25 0.5
Miles

FEIS ID#255f
(North Helena Substation Area)
COMMENT RESPONSE

Segment 4
Brookings to Hampton EIS



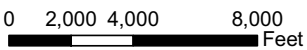


Original Alignments

- Preferred Route
- Alternate Route

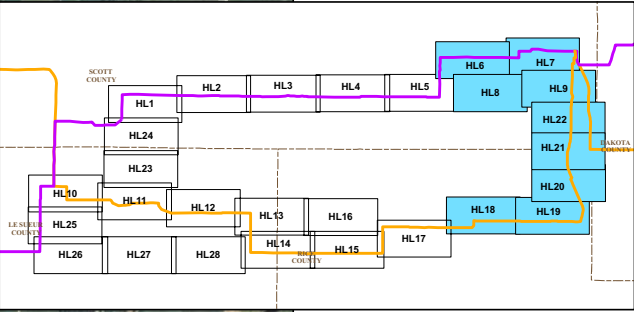
Additional Alternative Routes

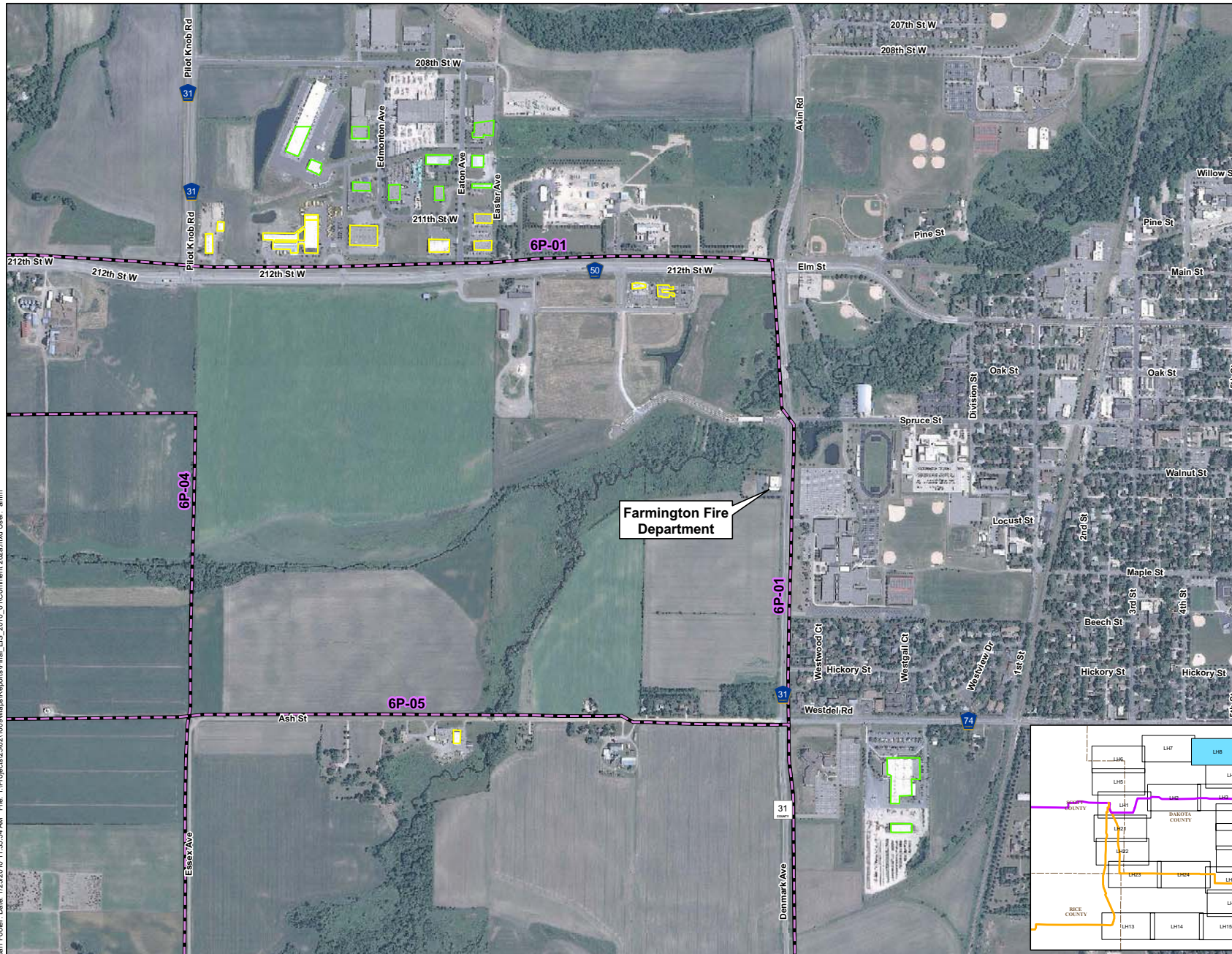
- Variation on Preferred Route
- Variation on Alternate Route
- Variation on Both
- Applicants Requested Route Width



FEIS ID#255g
(West of Lake Marion
and Along I-35)
COMMENT RESPONSE

Segment 5
Brookings to Hampton EIS





Original Alignments

- Preferred Route
- Alternate Route

Additional Alternative Routes

- Variation on Preferred Route
- Variation on Alternate Route
- Variation on Both

Commercial/Industrial Buildings (Provided by City of Farmington)

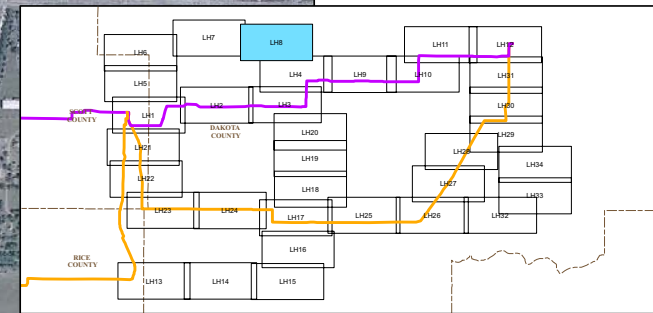
- Building within 75 feet
- Building within 500 feet
- Building > 500 feet

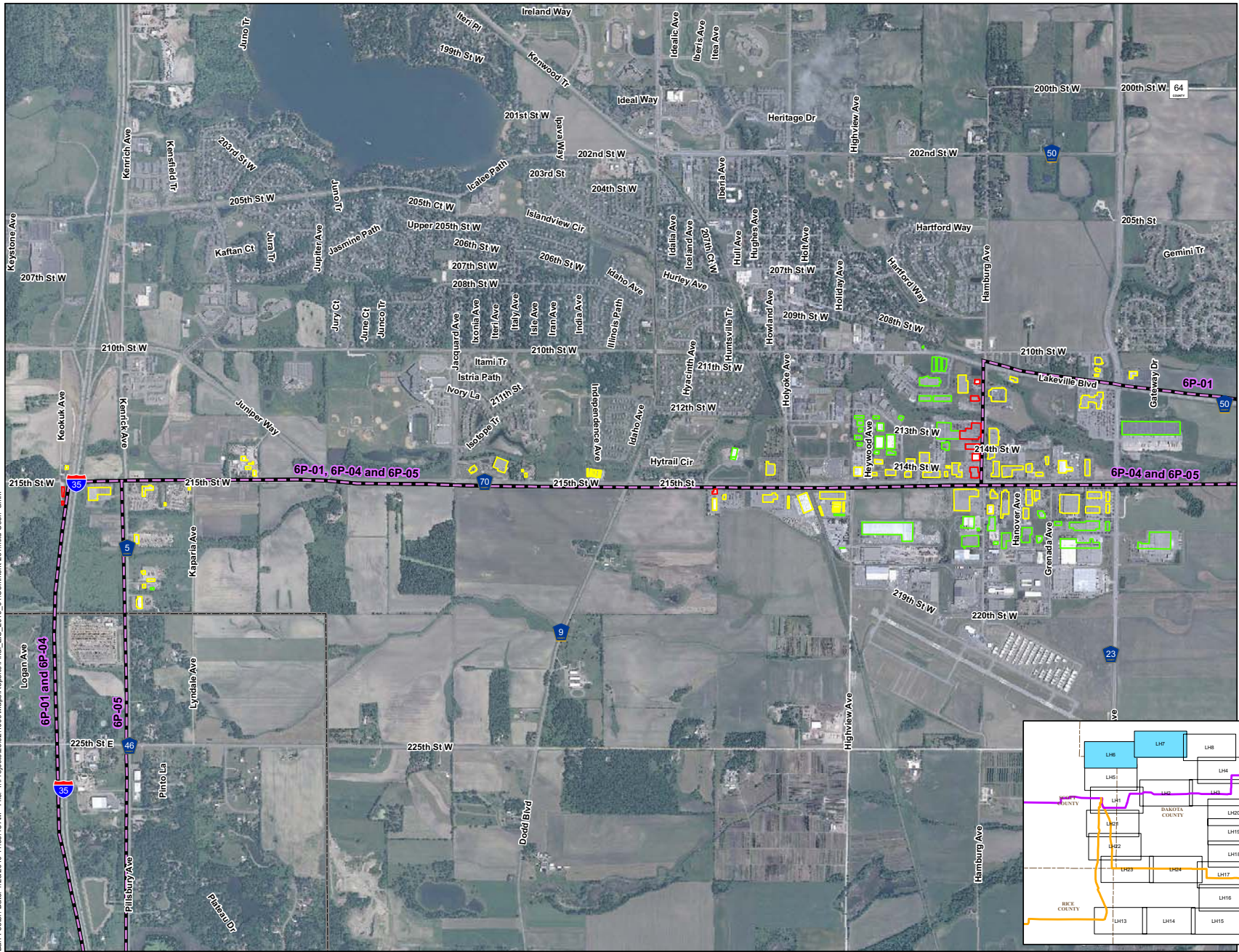


0 400 800 1,600 Feet

FEIS ID#262a
COMMENT RESPONSE

Segment 6
Brookings to Hampton EIS





Original Alignments

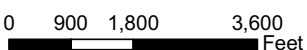
- Preferred Route
- Alternate Route

Additional Alternative Routes

- Variation on Preferred Route
- Variation on Alternate Route
- Variation on Both

**Commercial/Industrial Buildings
(Provided by City of Lakeville)**

- Building within 75 feet
- Building within 500 feet
- Building > 500 feet



FEIS ID#264
COMMENT RESPONSE

Segment 6
Brookings to Hampton EIS

