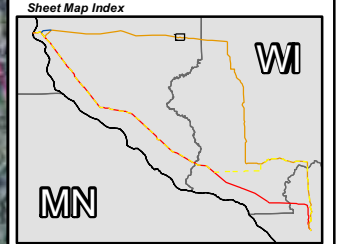
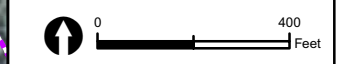


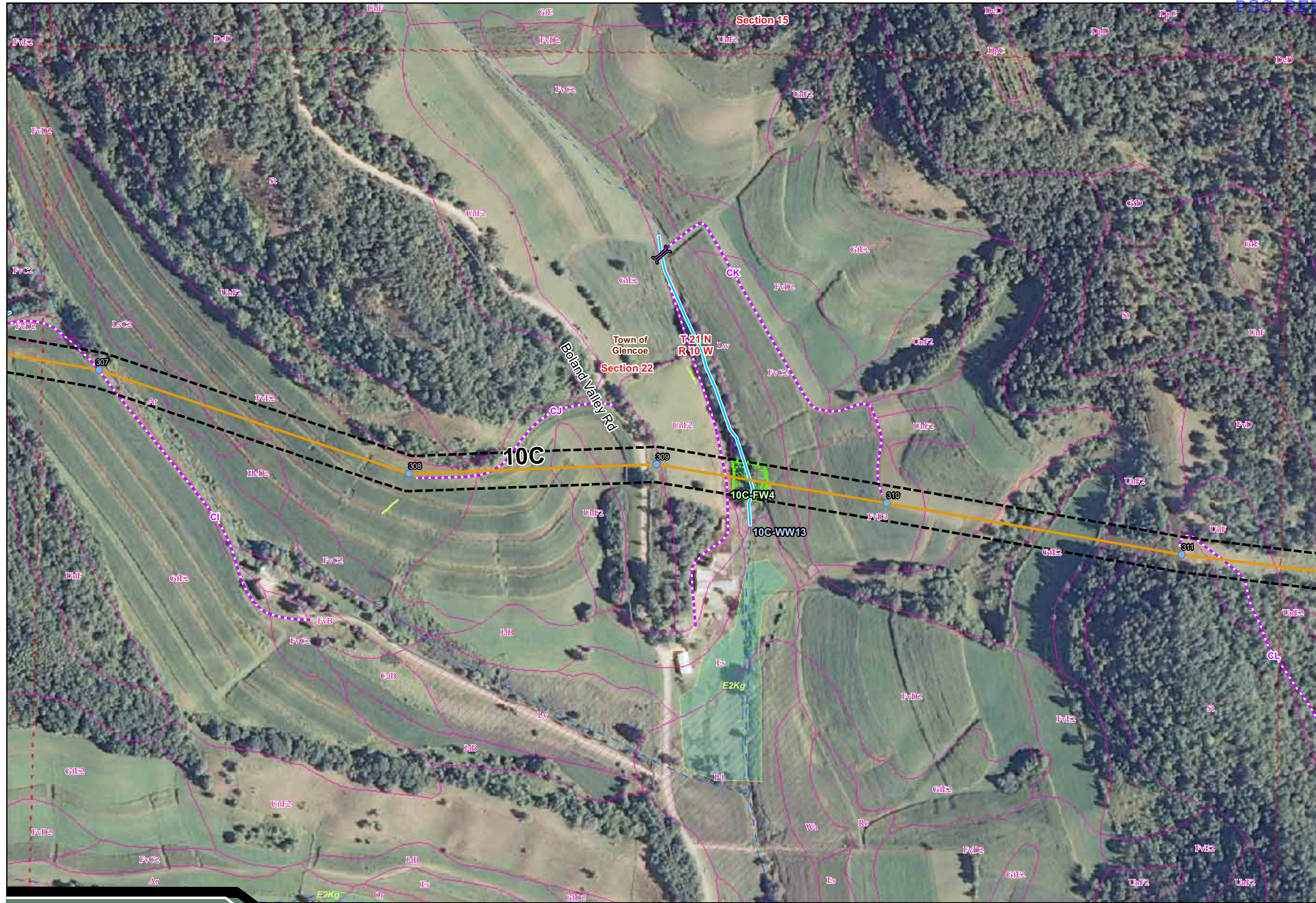
Sheet Map 59

Public Service Commission of Wisconsin
RECEIVED: 06/01/11, 12:48 PM

- Legend**
- Proposed Transmission Line Alternatives**
- Q1-Highway 35 Route
 - Arcadia Route
 - Arcadia-Alma Option
 - Q1-Galesville Route
- Project Features**
- Transmission Line Structure
 - Segment Endpoint
 - Proposed Substation Siting Area
 - Right-of-Way
 - Access Route
- Access Route Waterway Crossings**
- Temporary Clear Span Bridge
 - Miscellaneous Structure
- Identified Natural Resources**
- Wetlands Delineated from Aerial Interpret.
 - Field Sketched Wetlands
 - Field Sketched Open Water
 - Field Sketched Waterway
- Water Features (FEMA, WWI)**
- FEMA Floodplain
 - Wisconsin Wetland Inventory
- WDNR 24K Hydrography**
- Intermittent Stream
 - Perennial Stream
 - Waterbody
- NRCS Soils Survey Data**
- Hydric Soils
 - Possible Hydric Inclusions
 - Non-Hydric Soils
- Jurisdiction (WDNR)**
- State
 - County
 - Sections
 - City, Village or Town
- Distribution Lines**
- Xcel Distribution Lines
 - Riverland Distribution Lines



Data Sources: WDNR, WisDOT, BTS, USGS, PSCW, LMIC, FEMA, WWI, FCC, Platts, Census, Stantec
CapX2020 Environmental Figure
Aerial Photography Published by National Agriculture Imagery Program (NAIP), 2008



Hampton • Rochester • La Crosse 345kV Transmission Project

Xcel Energy • Dairyland Power Cooperative • Rochester Public Utilities • Wisconsin Public Power, Incorporated • Southern Minnesota Municipal Power Agency

Environmental Features

Revised March 2011



Sheet Map 61

Legend

Proposed Transmission Line Alternatives

- Q1-Highway 35 Route
- Arcadia Route
- Arcadia-Alma Option
- Q1-Galesville Route

Project Features

- Transmission Line Structure
- Segment Endpoint

Proposed Substation Siting Area

- Right-of-Way
- Access Route

Access Route Waterway Crossings

- Temporary Clear Span Bridge
- Miscellaneous Structure

Identified Natural Resources

- Wetlands Delineated from Aerial Interp.
- Field Sketched Wetlands
- Field Sketched Open Water
- Field Sketched Waterway

Water Features (FEMA, WWI)

- FEMA Floodplain
- Wisconsin Wetland Inventory

WDNR 24K Hydrography

- Intermittent Stream
- Perennial Stream
- Waterbody

NRCS Soils Survey Data

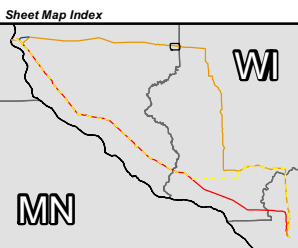
- Hydric Soils
- Possible Hydric Inclusions
- Non-Hydric Soils

Jurisdiction (WDNR)

- State
- County
- Sections
- City, Village or Town

Distribution Lines

- Xcel Distribution Lines
- Riverland Distribution Lines



Data Sources: WDNR, WisDOT, BTS, USGS, PSCW, LMIC, FEMA, WWI, FCC, Platts, Census, Stantec
CapX2020 Environmental Figure

Aerial Photography Published by National Agriculture Imagery Program (NAIP), 2008



CapX2020

Hampton • Rochester • La Crosse 345kV Transmission Project

Xcel Energy • Dairyland Power Cooperative • Rochester Public Utilities • Wisconsin Public Power, Incorporated • Southern Minnesota Municipal Power Agency

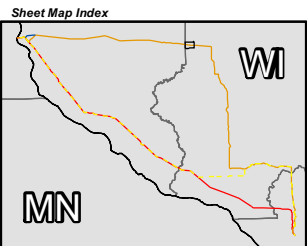
Environmental Features

Revised March 2011

Sheet Map 62

Legend

- Proposed Transmission Line Alternatives**
- Q1-Highway 35 Route
 - Arcadia Route
 - Arcadia-Alma Option
 - Q1-Galesville Route
- Project Features**
- Transmission Line Structure
 - Segment Endpoint
 - Proposed Substation Siting Area
 - Right-of-Way
 - Access Route
- Access Route Waterway Crossings**
- Temporary Clear Span Bridge
 - Miscellaneous Structure
- Identified Natural Resources**
- Wetlands Delineated from Aerial Interp.
 - Field Sketched Wetlands
 - Field Sketched Open Water
 - Field Sketched Waterway
- Water Features (FEMA, WWI)**
- FEMA Floodplain
 - Wisconsin Wetland Inventory
- WDNR 24K Hydrography**
- Intermittent Stream
 - Perennial Stream
 - Waterbody
- NRCS Soils Survey Data**
- Hydric Soils
 - Possible Hydric Inclusions
 - Non-Hydric Soils
- Jurisdiction (WDNR)**
- State
 - County
 - Sections
 - City, Village or Town
- Distribution Lines**
- Xcel Distribution Lines
 - Riverland Distribution Lines



Data Sources: WDNR, WisDOT, BTS, USGS, PSCW, LMIC, FEMA, WWI, FCC, Platts, Census, Stantec
CapX2020 Environmental Figure

Aerial Photography Published by National Agriculture Imagery Program (NAIP), 2008



CapX2020

Hampton • Rochester • La Crosse 345kV Transmission Project

Xcel Energy • Dairyland Power Cooperative • Rochester Public Utilities • Wisconsin Public Power, Incorporated • Southern Minnesota Municipal Power Agency

Environmental Features

Revised March 2011

Sheet Map 63

Legend

Proposed Transmission Line Alternatives

- Q1-Highway 35 Route
- Arcadia Route
- Arcadia-Alma Option
- Q1-Galesville Route

Project Features

- Transmission Line Structure
- Segment Endpoint

- Proposed Substation Siting Area

- Right-of-Way
- Access Route

Access Route Waterway Crossings

- Temporary Clear Span Bridge
- Miscellaneous Structure

Identified Natural Resources

- Wetlands Delineated from Aerial Interp.
- Field Sketched Wetlands
- Field Sketched Open Water
- Field Sketched Waterway

Water Features (FEMA, WWI)

- FEMA Floodplain
- Wisconsin Wetland Inventory

WDNR 24K Hydrography

- Intermittent Stream
- Perennial Stream
- Waterbody

NRCS Soils Survey Data

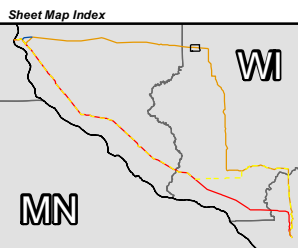
- Hydric Soils
- Possible Hydric Inclusions
- Non-Hydric Soils

Jurisdiction (WDNR)

- State
- County
- Sections
- City, Village or Town

Distribution Lines

- Xcel Distribution Lines
- Riverland Distribution Lines



Data Sources: WDNR, WisDOT, BTS, USGS, PSCW, LMIC, FEMA, WWI, FCC, Platts, Census, Stantec
CapX2020 Environmental Figure

Aerial Photography Published by National Agriculture Imagery Program (NAIP), 2008

Section 19

Section 20

Town of Arcadia

T 21 N
R 9 W

10C

10C-W6

10C-WW16

CS

Section 30

Section 29

CapX2020

Hampton • Rochester • La Crosse 345kV Transmission Project

Xcel Energy • Dairyland Power Cooperative • Rochester Public Utilities • Wisconsin Public Power, Incorporated • Southern Minnesota Municipal Power Agency

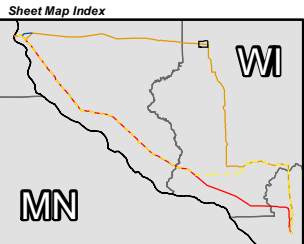
Environmental Features

Revised March 2011

Sheet Map 64

Legend

- Proposed Transmission Line Alternatives**
- Q1-Highway 35 Route
 - Arcadia Route
 - Arcadia-Alma Option
 - Q1-Galesville Route
- Project Features**
- Transmission Line Structure
 - Segment Endpoint
 - Proposed Substation Siting Area
 - Right-of-Way
 - Access Route
- Access Route Waterway Crossings**
- Temporary Clear Span Bridge
 - Miscellaneous Structure
- Identified Natural Resources**
- Wetlands Delineated from Aerial Interp.
 - Field Sketched Wetlands
 - Field Sketched Open Water
 - Field Sketched Waterway
- Water Features (FEMA, WWI)**
- FEMA Floodplain
 - Wisconsin Wetland Inventory
- WDNR 24K Hydrography**
- Intermittent Stream
 - Perennial Stream
 - Waterbody
- NRCS Soils Survey Data**
- Hydric Soils
 - Possible Hydric Inclusions
 - Non-Hydric Soils
- Jurisdiction (WDNR)**
- State
 - County
 - Sections
 - City, Village or Town
- Distribution Lines**
- Xcel Distribution Lines
 - Riverland Distribution Lines



Data Sources: WDNR, WisDOT, BTS, USGS, PSCW, LMIC, FEMA, WWI, FCC, Platts, Census, Stantec
CapX2020 Environmental Figure

Aerial Photography Published by National Agriculture Imagery Program (NAIP), 2008



CapX2020

Hampton • Rochester • La Crosse 345kV Transmission Project

Xcel Energy • Dairyland Power Cooperative • Rochester Public Utilities • Wisconsin Public Power, Incorporated • Southern Minnesota Municipal Power Agency

Environmental Features

Revised March 2011

Sheet Map 65

Legend

Proposed Transmission Line Alternatives

- Q1-Highway 35 Route
- Arcadia Route
- Arcadia-Alma Option
- Q1-Galesville Route

Project Features

- Transmission Line Structure
- Segment Endpoint
- Proposed Substation Siting Area
- Right-of-Way
- Access Route

Access Route Waterway Crossings

- Temporary Clear Span Bridge
- Miscellaneous Structure

Identified Natural Resources

- Wetlands Delineated from Aerial Interpretation
- Field Sketched Wetlands
- Field Sketched Open Water
- Field Sketched Waterway

Water Features (FEMA, WWI)

- FEMA Floodplain
- Wisconsin Wetland Inventory

WDNR 24K Hydrography

- Intermittent Stream
- Perennial Stream
- Waterbody

NRCS Soils Survey Data

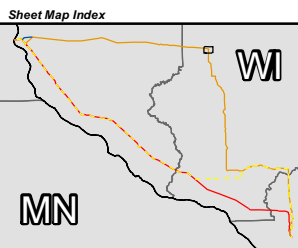
- Hydric Soils
- Possible Hydric Inclusions
- Non-Hydric Soils

Jurisdiction (WDNR)

- State
- County
- Sections
- City, Village or Town

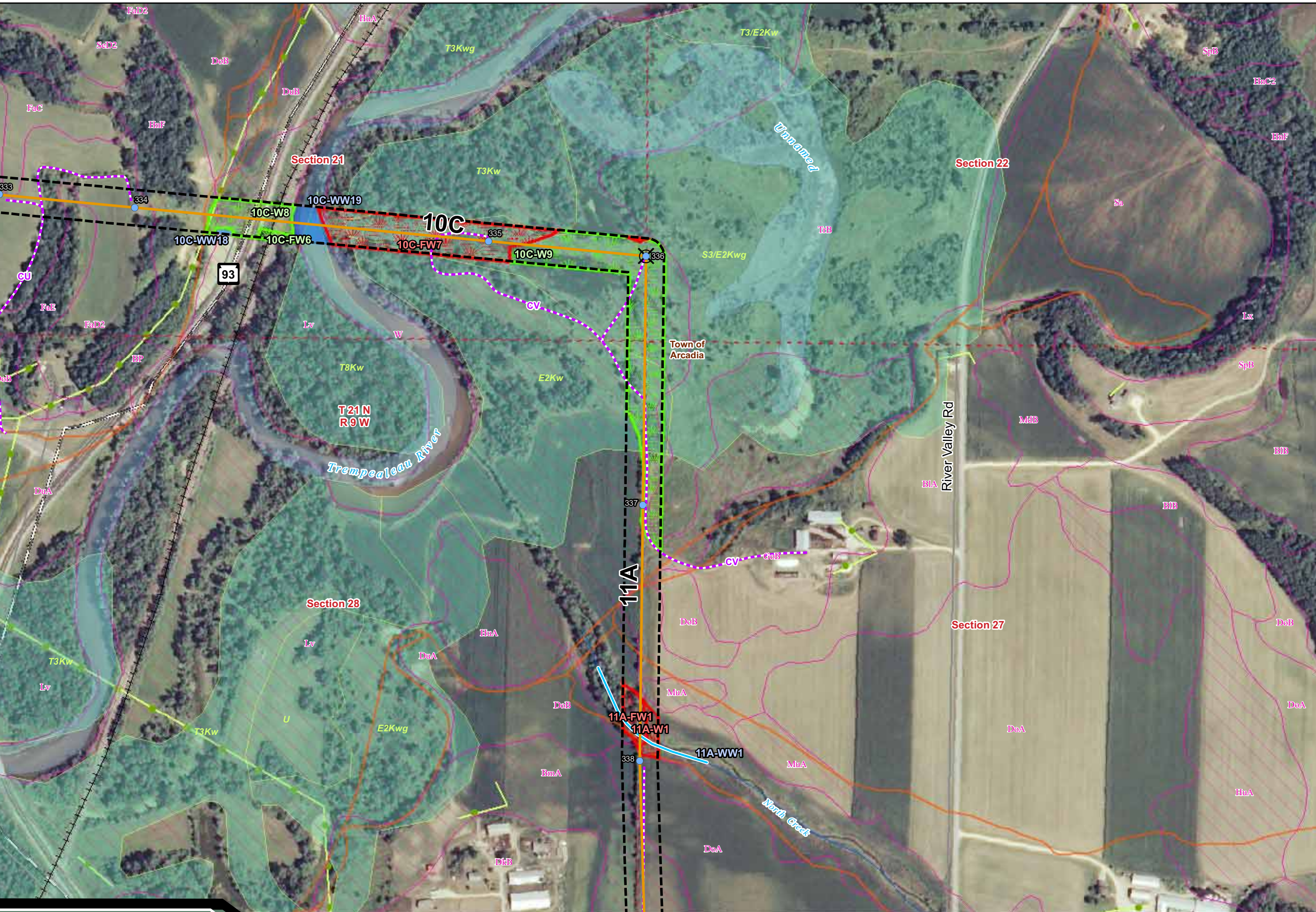
Distribution Lines

- Xcel Distribution Lines
- Riverland Distribution Lines



Data Sources: WDNR, WisDOT, BTS, USGS, PSCW, LMIC, FEMA, WWI, FCC, Platts, Census, Stantec
CapX2020 Environmental Figure

Aerial Photography Published by National Agriculture Imagery Program (NAIP), 2008



CapX2020

Hampton • Rochester • La Crosse 345kV Transmission Project

Xcel Energy • Dairyland Power Cooperative • Rochester Public Utilities • Wisconsin Public Power, Incorporated • Southern Minnesota Municipal Power Agency

Environmental Features

Revised March 2011

Sheet Map 66

Legend

Proposed Transmission Line Alternatives

- Q1-Highway 35 Route
- Arcadia Route
- Arcadia-Alma Option
- Q1-Galesville Route

Project Features

- Transmission Line Structure
- Segment Endpoint

- Proposed Substation Siting Area

- Right-of-Way
- Access Route

Access Route Waterway Crossings

- Temporary Clear Span Bridge
- Miscellaneous Structure

Identified Natural Resources

- Wetlands Delineated from Aerial Interpret.
- Field Sketched Wetlands
- Field Sketched Open Water
- Field Sketched Waterway

Water Features (FEMA, WWI)

- FEMA Floodplain
- Wisconsin Wetland Inventory

WDNR 24K Hydrography

- Intermittent Stream
- Perennial Stream
- Waterbody

NRCS Soils Survey Data

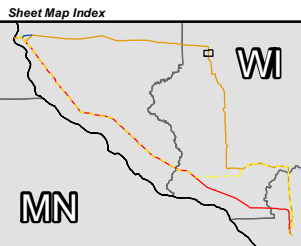
- Hydric Soils
- Possible Hydric Inclusions
- Non-Hydric Soils

Jurisdiction (WDNR)

- State
- County
- Sections
- City, Village or Town

Distribution Lines

- Xcel Distribution Lines
- Riverland Distribution Lines



Data Sources: WDNR, WisDOT, BTS, USGS, PSCW, LMIC, FEMA, WWI, FCC, Platts, Census, Stantec
CapX2020 Environmental Figure

Aerial Photography Published by National Agriculture Imagery Program (NAIP), 2008



CapX2020

Hampton • Rochester • La Crosse 345kV Transmission Project

Xcel Energy • Dairyland Power Cooperative • Rochester Public Utilities • Wisconsin Public Power, Incorporated • Southern Minnesota Municipal Power Agency

Environmental Features

Revised March 2011

Sheet Map 67

Legend

Proposed Transmission Line Alternatives

- Q1-Highway 35 Route
- Arcadia Route
- Arcadia-Alma Option
- Q1-Galesville Route

Project Features

- Transmission Line Structure
- Segment Endpoint

- Proposed Substation Siting Area

- Right-of-Way
- Access Route

Access Route Waterway Crossings

- Temporary Clear Span Bridge
- Miscellaneous Structure

Identified Natural Resources

- Wetlands Delineated from Aerial Interp.
- Field Sketched Wetlands
- Field Sketched Open Water
- Field Sketched Waterway

Water Features (FEMA, WWI)

- FEMA Floodplain
- Wisconsin Wetland Inventory

WDNR 24K Hydrography

- Intermittent Stream
- Perennial Stream
- Waterbody

NRCS Soils Survey Data

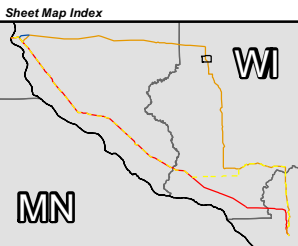
- Hydric Soils
- Possible Hydric Inclusions
- Non-Hydric Soils

Jurisdiction (WDNR)

- State
- County
- Sections
- City, Village or Town

Distribution Lines

- Xcel Distribution Lines
- Riverland Distribution Lines



Data Sources: WDNR, WisDOT, BTS, USGS, PSCW, LMIC, FEMA, WWI, FCC, Platts, Census, Stantec
CapX2020 Environmental Figure

Aerial Photography Published by National Agriculture Imagery Program (NAIP), 2008

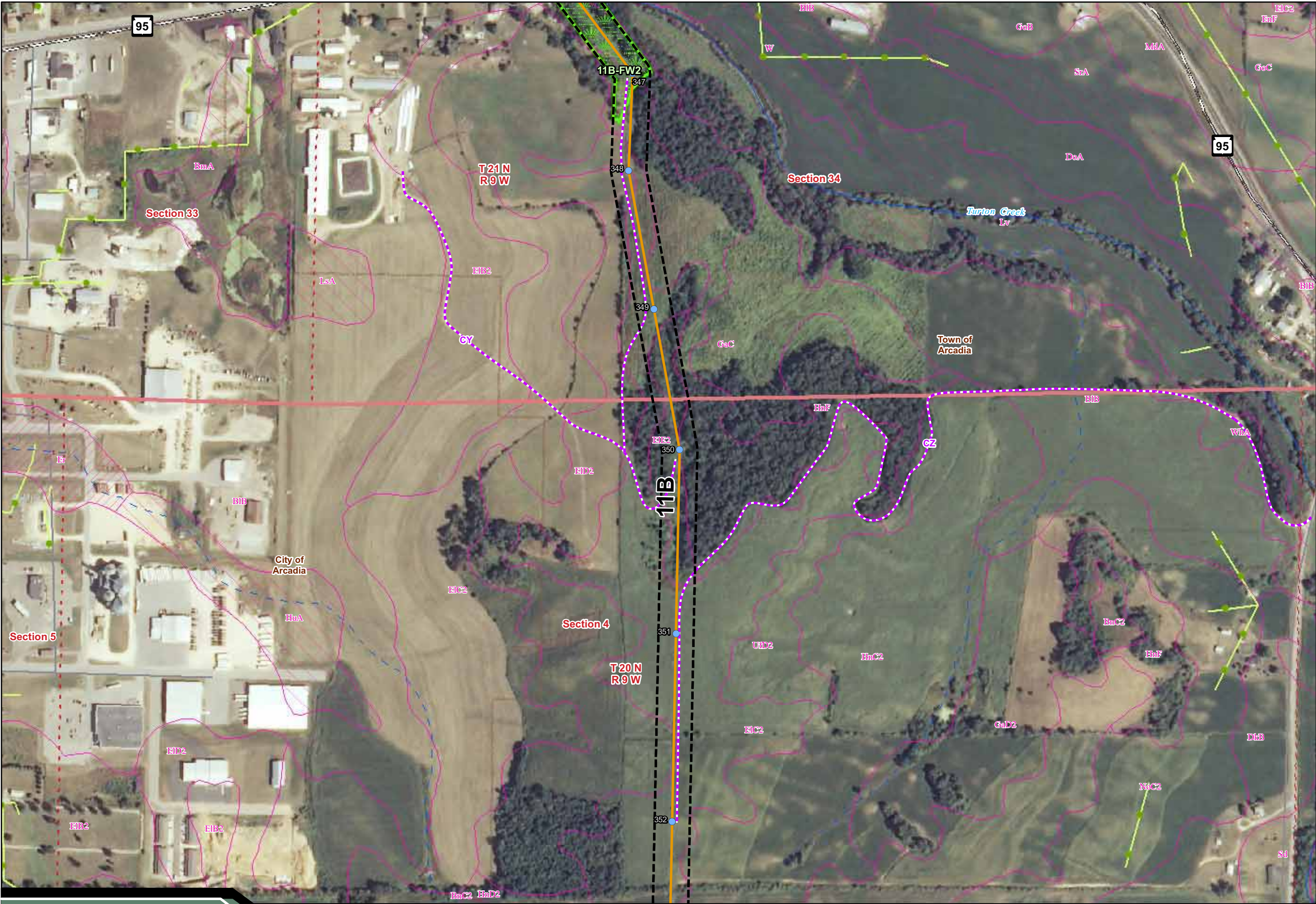
CapX2020

Hampton • Rochester • La Crosse 345kV Transmission Project

Xcel Energy • Dairyland Power Cooperative • Rochester Public Utilities • Wisconsin Public Power, Incorporated • Southern Minnesota Municipal Power Agency

Environmental Features

Revised March 2011



Sheet Map 68

Legend

Proposed Transmission Line Alternatives

- Q1-Highway 35 Route
- Arcadia Route
- Arcadia-Alma Option
- Q1-Galesville Route

Project Features

- Transmission Line Structure
- Segment Endpoint
- Proposed Substation Siting Area
- Right-of-Way
- Access Route

Access Route Waterway Crossings

- Temporary Clear Span Bridge
- Miscellaneous Structure

Identified Natural Resources

- Wetlands Delineated from Aerial Interp.
- Field Sketched Wetlands
- Field Sketched Open Water
- Field Sketched Waterway

Water Features (FEMA, WWI)

- FEMA Floodplain
- Wisconsin Wetland Inventory

WDNR 24K Hydrography

- Intermittent Stream
- Perennial Stream
- Waterbody

NRCS Soils Survey Data

- Hydric Soils
- Possible Hydric Inclusions
- Non-Hydric Soils

Jurisdiction (WDNR)

- State
- County
- Sections
- City, Village or Town

Distribution Lines

- Xcel Distribution Lines
- Riverland Distribution Lines

0 400 Feet

Sheet Map Index

Data Sources: WDNR, WisDOT, BTS, USGS, PSCW, LMIC, FEMA, WWI, FCC, Platts, Census, Stantec
CapX2020 Environmental Figure

Aerial Photography Published by National Agriculture Imagery Program (NAIP), 2008

Legend

Proposed Transmission Line Alternatives

- Q1-Highway 35 Route
- Arcadia Route
- Arcadia-Alma Option
- Q1-Galesville Route

Project Features

- Transmission Line Structure
- Segment Endpoint

- Proposed Substation Siting Area

- Right-of-Way
- Access Route

Access Route Waterway Crossings

- Temporary Clear Span Bridge
- Miscellaneous Structure

Identified Natural Resources

- Wetlands Delineated from Aerial Interp.
- Field Sketched Wetlands
- Field Sketched Open Water
- Field Sketched Waterway

Water Features (FEMA, WWI)

- FEMA Floodplain
- Wisconsin Wetland Inventory

WDNR 24K Hydrography

- Intermittent Stream
- Perennial Stream
- Waterbody

NRCS Soils Survey Data

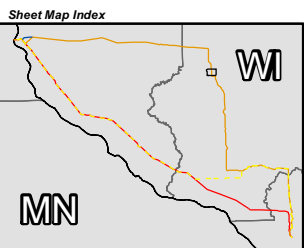
- Hydric Soils
- Possible Hydric Inclusions
- Non-Hydric Soils

Jurisdiction (WDNR)

- State
- County
- Sections
- City, Village or Town

Distribution Lines

- Xcel Distribution Lines
- Riverland Distribution Lines



Data Sources: WDNR, WisDOT, BTS, USGS, PSCW, LMIC, FEMA, WWI, FCC, Platts, Census, Stantec
CapX2020 Environmental Figure

Aerial Photography Published by National Agriculture Imagery Program (NAIP), 2008



Sheet Map 70

Legend

Proposed Transmission Line Alternatives

- Q1-Highway 35 Route
- Arcadia Route
- Arcadia-Alma Option
- Q1-Galesville Route

Project Features

- Transmission Line Structure
- Segment Endpoint
- Proposed Substation Siting Area
- Right-of-Way
- Access Route

Access Route Waterway Crossings

- Temporary Clear Span Bridge
- Miscellaneous Structure

Identified Natural Resources

- Wetlands Delineated from Aerial Interp.
- Field Sketched Wetlands
- Field Sketched Open Water
- Field Sketched Waterway

Water Features (FEMA, WWI)

- FEMA Floodplain
- Wisconsin Wetland Inventory

WDNR 24K Hydrography

- Intermittent Stream
- Perennial Stream
- Waterbody

NRCS Soils Survey Data

- Hydric Soils
- Possible Hydric Inclusions
- Non-Hydric Soils

Jurisdiction (WDNR)

- State
- County
- Sections
- City, Village or Town

Distribution Lines

- Xcel Distribution Lines
- Riverland Distribution Lines

0 400 Feet

Sheet Map Index


Data Sources: WDNR, WisDOT, BTS, USGS, PSCW, LMIC, FEMA, WWI, FCC, Platts, Census, Stantec
CapX2020 Environmental Figure


Aerial Photography Published by National Agriculture Imagery Program (NAIP), 2008



Legend

- Q1-Highway 35 Route
- Arcadia Route
- Arcadia-Alma Option
- Q1-Galesville Route

- Transmission Line Structure

-  Segment Endpoint


- 
- Proposed Substation
-
- Siting Area

-  Right-of-Way
 Access Route

 Temporary Clear Span Bridge

- Miscellaneous Structure

 Wetlands Delineated from Aerial Interpretation

-  Field Sketched Wetlands

-  Field Sketched Open Water

Field Sketched Waterway

- Water Features** (FEMA, WWI)

 FEMA Floodplain

- Wisconsin Wetland Inventory


WDNR 24K Hydrography

- Intermittent Stream

- Perennial Stream

 Waterbody

- ### NRCS Soils Survey Data

-  Hydric Soils

-
- Possible Hydric Inclusions

☐ Non-Hydric Soils

- Jurisdiction** (WDNR)

- E:** State

- County

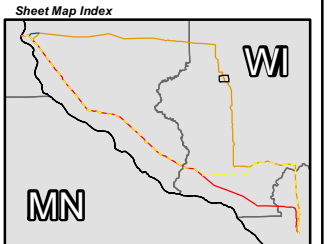
- ## Sections

- City, Village or Town

Distribution Lines

- Xcel Distribution Lines

- Riverland Distribution Lines



Data Sources: WDNR, WisDOT, BTS, USGS, PSCW, LMIC, FEMA, WWI, FCC, Platts, Census, Stantec
CanY2020 Environmental Figure

Aerial Photography Published by
National Agriculture Imagery Program (NAIP) 2008

CapX2020

Hampton • Rochester • La Crosse 345kV Transmission Project

Environmental Features

Revised March 2011



Sheet Map 72

Legend

Proposed Transmission Line Alternatives

- Q1-Highway 35 Route
- Arcadia Route
- Arcadia-Alma Option
- Q1-Galesville Route

Project Features

- Transmission Line Structure
- Segment Endpoint
- Proposed Substation Siting Area
- Right-of-Way
- Access Route

Access Route Waterway Crossings

- Temporary Clear Span Bridge
- Miscellaneous Structure

Identified Natural Resources

- Wetlands Delineated from Aerial Interp.
- Field Sketched Wetlands
- Field Sketched Open Water
- Field Sketched Waterway

Water Features (FEMA, WWI)

- FEMA Floodplain
- Wisconsin Wetland Inventory

WDNR 24K Hydrography

- Intermittent Stream
- Perennial Stream
- Waterbody

NRCS Soils Survey Data

- Hydric Soils
- Possible Hydric Inclusions
- Non-Hydric Soils

Jurisdiction (WDNR)

- State
- County
- Sections
- City, Village or Town

Distribution Lines

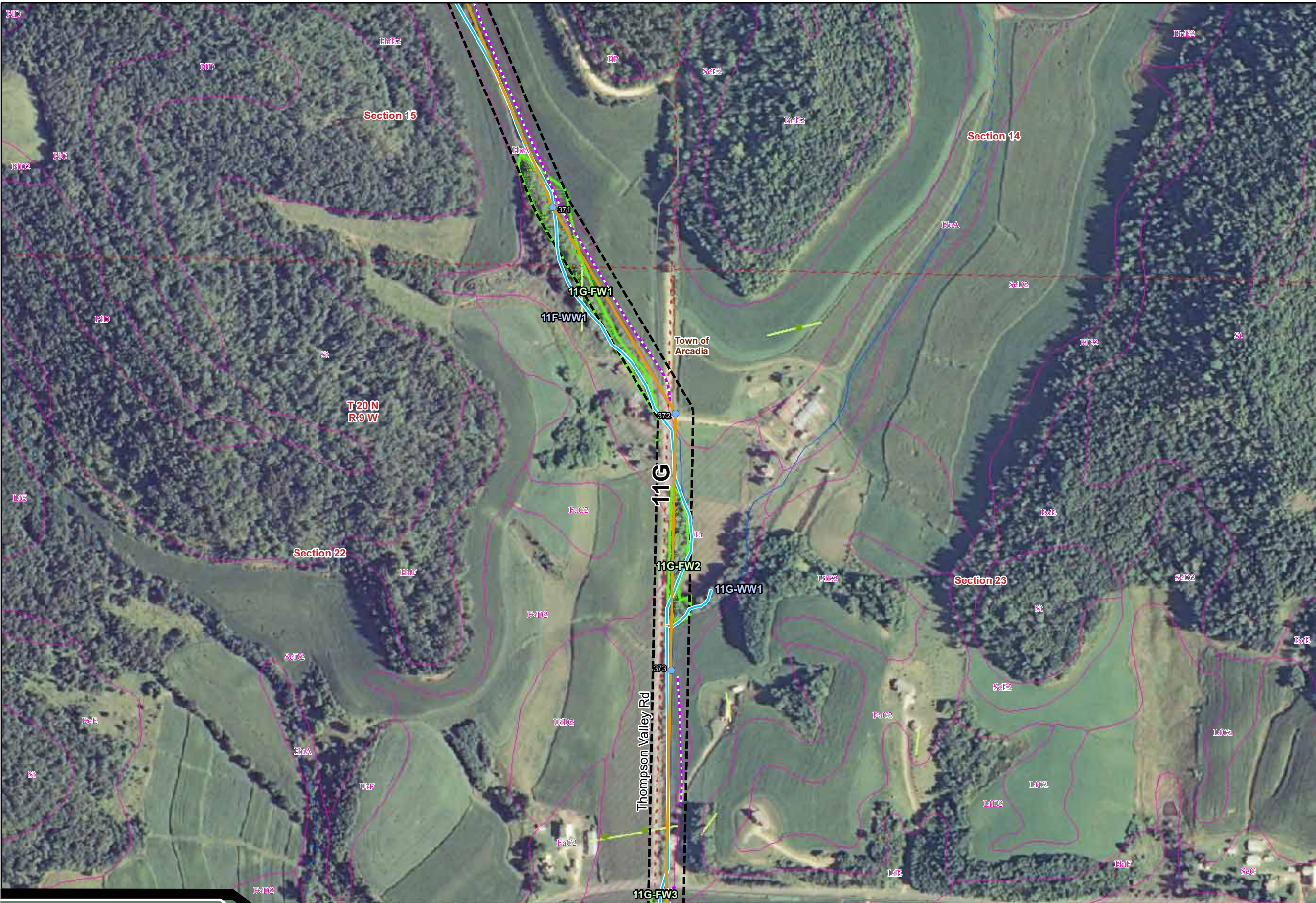
- Xcel Distribution Lines
- Riverland Distribution Lines

0 400 Feet

Sheet Map Index

Data Sources: WDNR, WisDOT, BTS, USGS, PSCW, LMIC, FEMA, WWI, FCC, Platts, Census, Stantec
CapX2020 Environmental Figure

Aerial Photography Published by National Agriculture Imagery Program (NAIP), 2008



Sheet Map 73

Legend

Proposed Transmission Line Alternatives

- Q1-Highway 35 Route
- Arcadia Route
- Arcadia-Alma Option
- Q1-Galesville Route

Project Features

- Transmission Line Structure
- Segment Endpoint

Proposed Substation Siting Area

- Right-of-Way
- Access Route

Access Route Waterway Crossings

- Temporary Clear Span Bridge
- Miscellaneous Structure

Identified Natural Resources

- Wetlands Delineated from Aerial Interp.
- Field Sketched Wetlands
- Field Sketched Open Water
- Field Sketched Waterway

Water Features (FEMA, WWI)

- FEMA Floodplain
- Wisconsin Wetland Inventory

WDNR 24K Hydrography

- Intermittent Stream
- Perennial Stream
- Waterbody

NRCS Soils Survey Data

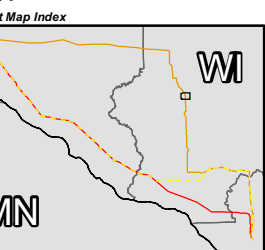
- Hydric Soils
- Possible Hydric Inclusions
- Non-Hydric Soils

Jurisdiction (WDNR)

- State
- County
- Sections
- City, Village or Town

Distribution Lines

- Xcel Distribution Lines
- Riverland Distribution Lines



Data Sources: WDNR, WisDOT, BTS, USGS, PSCW, LMIC, FEMA, WWI, FCC, Platts, Census, Stantec
CapX2020 Environmental Figure

Aerial Photography Published by National Agriculture Imagery Program (NAIP), 2008

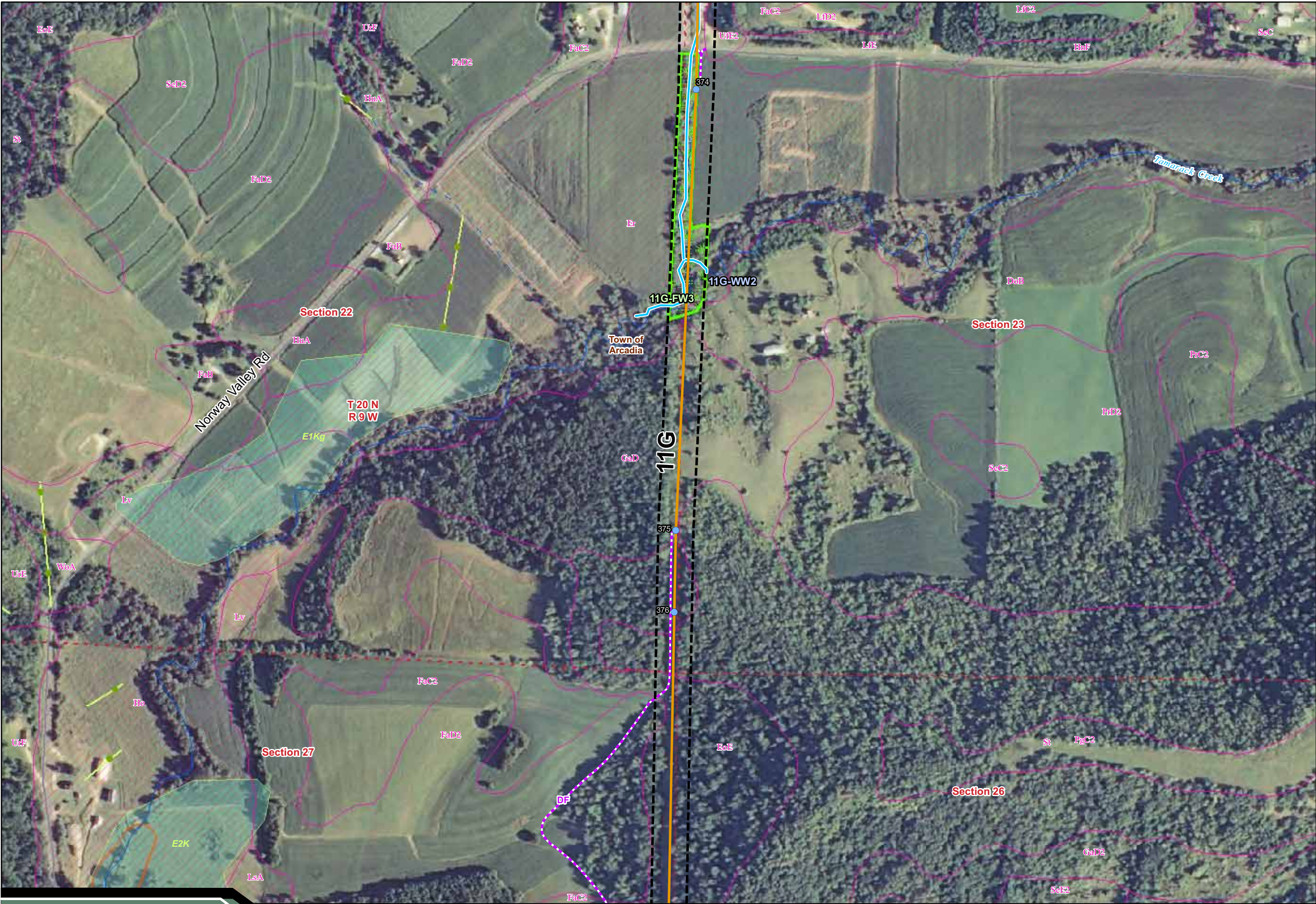
CapX2020

Hampton • Rochester • La Crosse 345kV Transmission Project

Xcel Energy • Dairyland Power Cooperative • Rochester Public Utilities • Wisconsin Public Power, Incorporated • Southern Minnesota Municipal Power Agency

Environmental Features

Revised March 2011



Sheet Map 74

Legend

Proposed Transmission Line Alternatives

- Q1-Highway 35 Route
- Arcadia Route
- Arcadia-Alma Option
- Q1-Galesville Route

Project Features

- Transmission Line Structure
- Segment Endpoint
- Proposed Substation Siting Area
- Right-of-Way
- Access Route

Access Route Waterway Crossings

- Temporary Clear Span Bridge
- Miscellaneous Structure

Identified Natural Resources

- Wetlands Delineated from Aerial Interp.
- Field Sketched Wetlands
- Field Sketched Open Water
- Field Sketched Waterway

Water Features (FEMA, WWI)

- FEMA Floodplain
- Wisconsin Wetland Inventory

WDNR 24K Hydrography

- Intermittent Stream
- Perennial Stream
- Waterbody

NRCS Soils Survey Data

- Hydric Soils
- Possible Hydric Inclusions
- Non-Hydric Soils

Jurisdiction (WDNR)

- State
- County
- Sections
- City, Village or Town

Distribution Lines

- Xcel Distribution Lines
- Riverland Distribution Lines

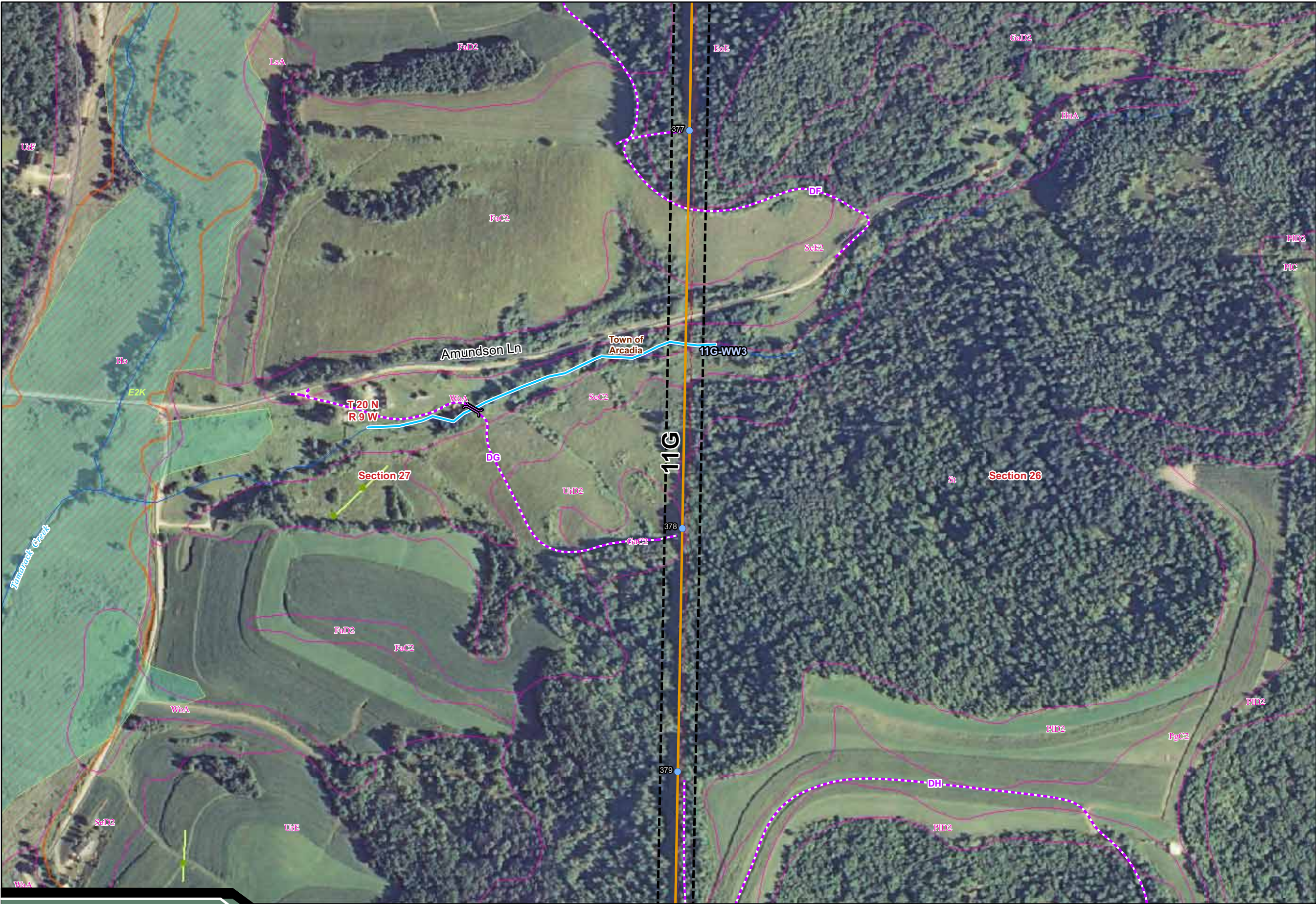
0 400 Feet

Sheet Map Index

MN WI

Data Sources: WDNR, WisDOT, BTS, USGS, PSCW, LMIC, FEMA, WWI, FCC, Platts, Census, Stantec
CapX2020 Environmental Figure

Aerial Photography Published by National Agriculture Imagery Program (NAIP), 2008



Sheet Map 75

Legend

Proposed Transmission Line Alternatives

- Q1-Highway 35 Route
- Arcadia Route
- Arcadia-Alma Option
- Q1-Galesville Route

Project Features

- Transmission Line Structure
- Segment Endpoint
- Proposed Substation Siting Area
- Right-of-Way
- Access Route

Access Route Waterway Crossings

- Temporary Clear Span Bridge
- Miscellaneous Structure

Identified Natural Resources

- Wetlands Delineated from Aerial Interp.
- Field Sketched Wetlands
- Field Sketched Open Water
- Field Sketched Waterway

Water Features (FEMA, WWI)

- FEMA Floodplain
- Wisconsin Wetland Inventory

WDNR 24K Hydrography

- Intermittent Stream
- Perennial Stream
- Waterbody

NRCS Soils Survey Data

- Hydric Soils
- Possible Hydric Inclusions
- Non-Hydric Soils

Jurisdiction (WDNR)

- State
- County
- Sections
- City, Village or Town

Distribution Lines

- Xcel Distribution Lines
- Riverland Distribution Lines

0 400 Feet

Sheet Map Index

Data Sources: WDNR, WisDOT, BTS, USGS, PSCW, LMIC, FEMA, WWI, FCC, Platts, Census, Stantec
CapX2020 Environmental Figure

Aerial Photography Published by National Agriculture Imagery Program (NAIP), 2008



Sheet Map 76

Legend

Proposed Transmission Line Alternatives

- Q1-Highway 35 Route
- Arcadia Route
- Arcadia-Alma Option
- Q1-Galesville Route

Project Features

- Transmission Line Structure
- Segment Endpoint
- Proposed Substation Siting Area
- Right-of-Way
- Access Route

Access Route Waterway Crossings

- Temporary Clear Span Bridge
- Miscellaneous Structure

Identified Natural Resources

- Wetlands Delineated from Aerial Interp.
- Field Sketched Wetlands
- Field Sketched Open Water
- Field Sketched Waterway

Water Features (FEMA, WWI)

- FEMA Floodplain
- Wisconsin Wetland Inventory

WDNR 24K Hydrography

- Intermittent Stream
- Perennial Stream
- Waterbody

NRCS Soils Survey Data

- Hydric Soils
- Possible Hydric Inclusions
- Non-Hydric Soils

Jurisdiction (WDNR)

- State
- County
- Sections
- City, Village or Town

Distribution Lines

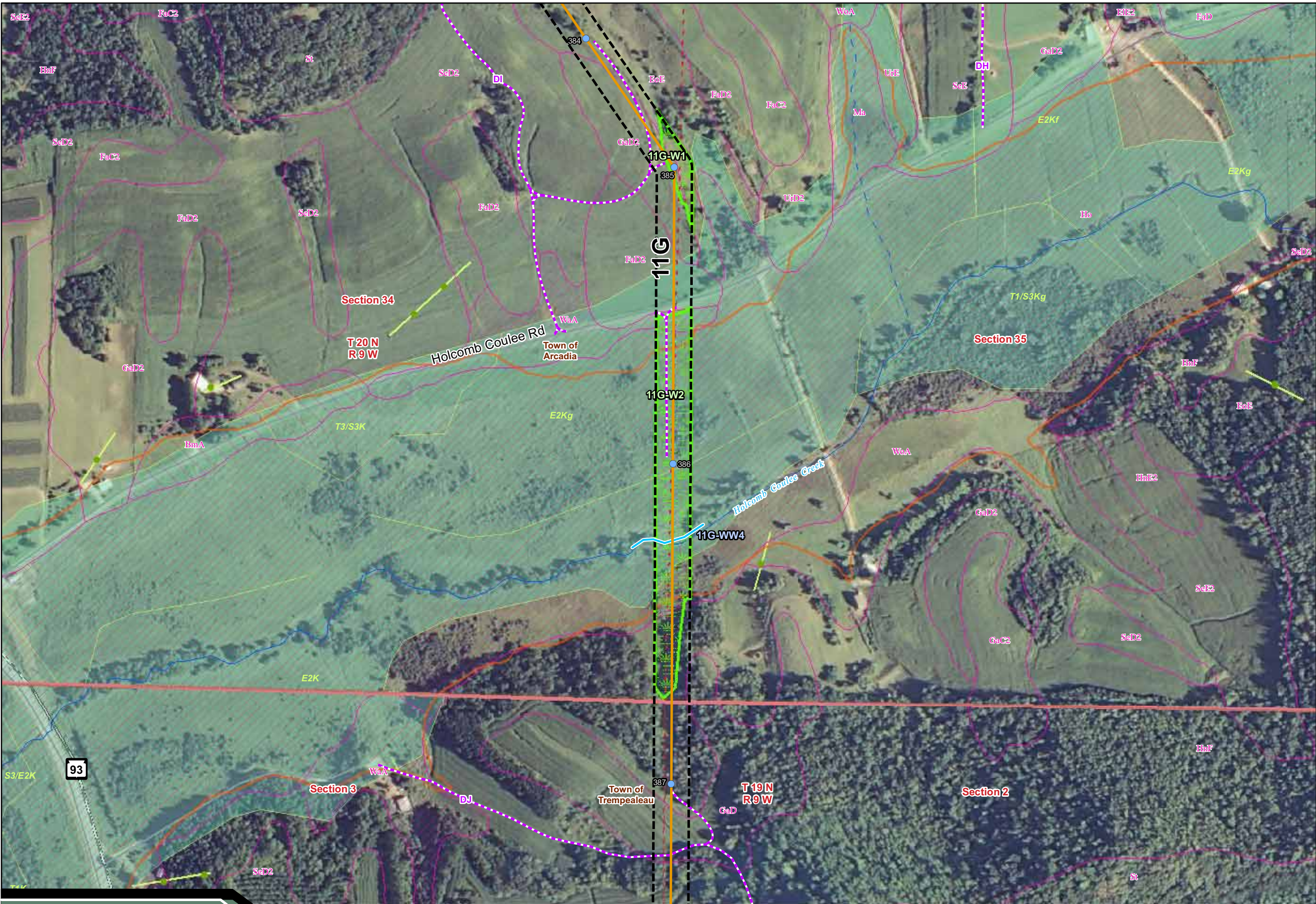
- Xcel Distribution Lines
- Riverland Distribution Lines

0 400 Feet

Sheet Map Index

Data Sources: WDNR, WisDOT, BTS, USGS, PSCW, LMIC, FEMA, WWI, FCC, Platts, Census, Stantec
CapX2020 Environmental Figure

Aerial Photography Published by National Agriculture Imagery Program (NAIP), 2008



Sheet Map 77

Legend

Proposed Transmission Line Alternatives

- Q1-Highway 35 Route
- Arcadia Route
- Arcadia-Alma Option
- Q1-Galesville Route

Project Features

- Transmission Line Structure
- Segment Endpoint
- Proposed Substation Siting Area
- Right-of-Way
- Access Route

Access Route Waterway Crossings

- Temporary Clear Span Bridge
- Miscellaneous Structure

Identified Natural Resources

- Wetlands Delineated from Aerial Interp.
- Field Sketched Wetlands
- Field Sketched Open Water
- Field Sketched Waterway

Water Features (FEMA, WWI)

- FEMA Floodplain
- Wisconsin Wetland Inventory

WDNR 24K Hydrography

- Intermittent Stream
- Perennial Stream
- Waterbody

NRCS Soils Survey Data

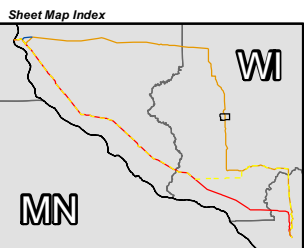
- Hydric Soils
- Possible Hydric Inclusions
- Non-Hydric Soils

Jurisdiction (WDNR)

- State
- County
- Sections
- City, Village or Town

Distribution Lines

- Xcel Distribution Lines
- Riverland Distribution Lines



Data Sources: WDNR, WisDOT, BTS, USGS, PSCW, LMIC, FEMA, WWI, FCC, Platts, Census, Stantec
CapX2020 Environmental Figure

Aerial Photography Published by National Agriculture Imagery Program (NAIP), 2008

CapX2020

Hampton • Rochester • La Crosse 345kV Transmission Project

Xcel Energy • Dairyland Power Cooperative • Rochester Public Utilities • Wisconsin Public Power, Incorporated • Southern Minnesota Municipal Power Agency

Environmental Features

Revised March 2011

Legend

- Q1-Highway 35 Route
- Arcadia Route
- Arcadia-Alma Option
- Q1-Galesville Route

-  Transmission Line Structure
-  Segment Endpoint
-  Proposed Substation Siting Area
-  Right-of-Way
-  Access Route



Temporary Clear Span Bridge
Miscellaneous Structure

 Wetlands Delineated from Aerial Interp.
 Field Sketched Wetlands
 Field Sketched Open Water
 Field Sketched Waterway

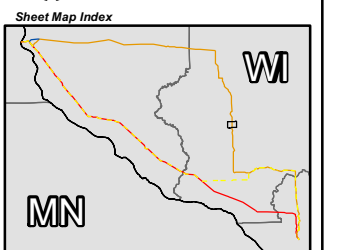
 FEMA Floodplain
 Wisconsin Wetland Inventory

 Intermittent Stream
 Perennial Stream
 Waterbody

 Hydric Soils
 Possible Hydric Inclusions
 Non-Hydric Soils

 State
 County
 Sections
 City, Village or Town

 Xcel Distribution Lines
 Riverland Distribution Lines



Aerial Photography Published by
National Agriculture Imagery Program (NAIP), 2008

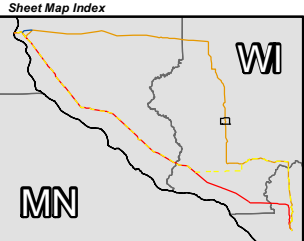
Revised March 2011

CapX2020

Sheet Map 79

Legend

- Proposed Transmission Line Alternatives**
- Q1-Highway 35 Route
 - Arcadia Route
 - Arcadia-Alma Option
 - Q1-Galesville Route
- Project Features**
- Transmission Line Structure
 - Segment Endpoint
 - Proposed Substation Siting Area
 - Right-of-Way
 - Access Route
- Access Route Waterway Crossings**
- Temporary Clear Span Bridge
 - Miscellaneous Structure
- Identified Natural Resources**
- Wetlands Delineated from Aerial Interp.
 - Field Sketched Wetlands
 - Field Sketched Open Water
 - Field Sketched Waterway
- Water Features (FEMA, WWI)**
- FEMA Floodplain
 - Wisconsin Wetland Inventory
- WDNR 24K Hydrography**
- Intermittent Stream
 - Perennial Stream
 - Waterbody
- NRCS Soils Survey Data**
- Hydric Soils
 - Possible Hydric Inclusions
 - Non-Hydric Soils
- Jurisdiction (WDNR)**
- State
 - County
 - Sections
 - City, Village or Town
- Distribution Lines**
- Xcel Distribution Lines
 - Riverland Distribution Lines



Data Sources: WDNR, WisDOT, BTS, USGS, PSCW, LMIC, FEMA, WWI, FCC, Platts, Census, Stantec
CapX2020 Environmental Figure

Aerial Photography Published by National Agriculture Imagery Program (NAIP), 2008



CapX2020

Hampton • Rochester • La Crosse 345kV Transmission Project

Xcel Energy • Dairyland Power Cooperative • Rochester Public Utilities • Wisconsin Public Power, Incorporated • Southern Minnesota Municipal Power Agency

Environmental Features

Revised March 2011

Sheet Map 80

Legend

Proposed Transmission Line Alternatives

- Q1-Highway 35 Route
- Arcadia Route
- Arcadia-Alma Option
- Q1-Galesville Route

Project Features

- Transmission Line Structure
- Segment Endpoint

Proposed Substation Siting Area

- Right-of-Way
- Access Route

Access Route Waterway Crossings

- Temporary Clear Span Bridge
- Miscellaneous Structure

Identified Natural Resources

- Wetlands Delineated from Aerial Interp.
- Field Sketched Wetlands
- Field Sketched Open Water
- Field Sketched Waterway

Water Features (FEMA, WWI)

- FEMA Floodplain
- Wisconsin Wetland Inventory

WDNR 24K Hydrography

- Intermittent Stream
- Perennial Stream
- Waterbody

NRCS Soils Survey Data

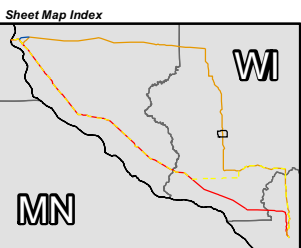
- Hydric Soils
- Possible Hydric Inclusions
- Non-Hydric Soils

Jurisdiction (WDNR)

- State
- County
- Sections
- City, Village or Town

Distribution Lines

- Xcel Distribution Lines
- Riverland Distribution Lines



Data Sources: WDNR, WisDOT, BTS, USGS, PSCW, LMIC, FEMA, WWI, FCC, Platts, Census, Stantec
CapX2020 Environmental Figure

Aerial Photography Published by National Agriculture Imagery Program (NAIP), 2008

CapX2020

Hampton • Rochester • La Crosse 345kV Transmission Project

Xcel Energy • Dairyland Power Cooperative • Rochester Public Utilities • Wisconsin Public Power, Incorporated • Southern Minnesota Municipal Power Agency

Environmental Features

Revised March 2011



Sheet Map 81

Legend

Proposed Transmission Line Alternatives

- Q1-Highway 35 Route
- Arcadia Route
- Arcadia-Alma Option
- Q1-Galesville Route

Project Features

- Transmission Line Structure
- Segment Endpoint
- Proposed Substation Siting Area
- Right-of-Way
- Access Route

Access Route Waterway Crossings

- Temporary Clear Span Bridge
- Miscellaneous Structure

Identified Natural Resources

- Wetlands Delineated from Aerial Interp.
- Field Sketched Wetlands
- Field Sketched Open Water
- Field Sketched Waterway

Water Features (FEMA, WWI)

- FEMA Floodplain
- Wisconsin Wetland Inventory

WDNR 24K Hydrography

- Intermittent Stream
- Perennial Stream
- Waterbody

NRCS Soils Survey Data

- Hydric Soils
- Possible Hydric Inclusions
- Non-Hydric Soils

Jurisdiction (WDNR)

- State
- County
- Sections
- City, Village or Town

Distribution Lines

- Xcel Distribution Lines
- Riverland Distribution Lines

0 400 Feet

Sheet Map Index

Data Sources: WDNR, WisDOT, BTS, USGS, PSCW, LMIC, FEMA, WWI, FCC, Platts, Census, Stantec
CapX2020 Environmental Figure

Aerial Photography Published by National Agriculture Imagery Program (NAIP), 2008



Sheet Map 82

Legend

Proposed Transmission Line Alternatives

- Q1-Highway 35 Route
- Arcadia Route
- Arcadia-Alma Option
- Q1-Galesville Route

Project Features

- Transmission Line Structure
- Segment Endpoint
- Proposed Substation Siting Area
- Right-of-Way
- Access Route

Access Route Waterway Crossings

- Temporary Clear Span Bridge
- Miscellaneous Structure

Identified Natural Resources

- Wetlands Delineated from Aerial Interp.
- Field Sketched Wetlands
- Field Sketched Open Water
- Field Sketched Waterway

Water Features (FEMA, WWI)

- FEMA Floodplain
- Wisconsin Wetland Inventory

WDNR 24K Hydrography

- Intermittent Stream
- Perennial Stream
- Waterbody

NRCS Soils Survey Data

- Hydric Soils
- Possible Hydric Inclusions
- Non-Hydric Soils

Jurisdiction (WDNR)

- State
- County
- Sections
- City, Village or Town

Distribution Lines

- Xcel Distribution Lines
- Riverland Distribution Lines

0 400 Feet

Sheet Map Index

Data Sources: WDNR, WisDOT, BTS, USGS, PSCW, LMIC, FEMA, WWI, FCC, Platts, Census, Stantec
CapX2020 Environmental Figure

Aerial Photography Published by National Agriculture Imagery Program (NAIP), 2008

Sheet Map 83

Legend

Proposed Transmission Line Alternatives

- Q1-Highway 35 Route
- Arcadia Route
- Arcadia-Alma Option
- Q1-Galesville Route

Project Features

- Transmission Line Structure
- Segment Endpoint
- Proposed Substation Siting Area
- Right-of-Way
- Access Route

Access Route Waterway Crossings

- Temporary Clear Span Bridge
- Miscellaneous Structure

Identified Natural Resources

- Wetlands Delineated from Aerial Interp.
- Field Sketched Wetlands
- Field Sketched Open Water
- Field Sketched Waterway

Water Features (FEMA, WWI)

- FEMA Floodplain
- Wisconsin Wetland Inventory

WDNR 24K Hydrography

- Intermittent Stream
- Perennial Stream
- Waterbody

NRCS Soils Survey Data

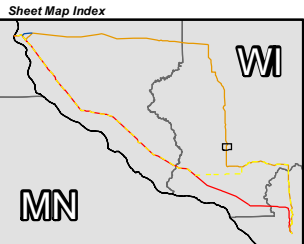
- Hydric Soils
- Possible Hydric Inclusions
- Non-Hydric Soils

Jurisdiction (WDNR)

- State
- County
- Sections
- City, Village or Town

Distribution Lines

- Xcel Distribution Lines
- Riverland Distribution Lines



Data Sources: WDNR, WisDOT, BTS, USGS, PSCW, LMIC, FEMA, WWI, FCC, Platts, Census, Stantec
CapX2020 Environmental Figure

Aerial Photography Published by National Agriculture Imagery Program (NAIP), 2008

CapX2020

Hampton • Rochester • La Crosse 345kV Transmission Project

Xcel Energy • Dairyland Power Cooperative • Rochester Public Utilities • Wisconsin Public Power, Incorporated • Southern Minnesota Municipal Power Agency

Environmental Features

Revised March 2011



Sheet Map 84

Legend

Proposed Transmission Line Alternatives

- Q1-Highway 35 Route
- Arcadia Route
- Arcadia-Alma Option
- Q1-Galesville Route

Project Features

- Transmission Line Structure
- Segment Endpoint
- Proposed Substation Siting Area
- Right-of-Way
- Access Route

Access Route Waterway Crossings

- Temporary Clear Span Bridge
- Miscellaneous Structure

Identified Natural Resources

- Wetlands Delineated from Aerial Interp.
- Field Sketched Wetlands
- Field Sketched Open Water
- Field Sketched Waterway

Water Features (FEMA, WWI)

- FEMA Floodplain
- Wisconsin Wetland Inventory

WDNR 24K Hydrography

- Intermittent Stream
- Perennial Stream
- Waterbody

NRCS Soils Survey Data

- Hydric Soils
- Possible Hydric Inclusions
- Non-Hydric Soils

Jurisdiction (WDNR)

- State
- County
- Sections
- City, Village or Town

Distribution Lines

- Xcel Distribution Lines
- Riverland Distribution Lines

0 400 Feet

Sheet Map Index

Data Sources: WDNR, WisDOT, BTS, USGS, PSCW, LMIC, FEMA, WWI, FCC, Platts, Census, Stantec
CapX2020 Environmental Figure

Aerial Photography Published by National Agriculture Imagery Program (NAIP), 2008

Sheet Map 85

Legend

Proposed Transmission Line Alternatives

- Q1-Highway 35 Route
- Arcadia Route
- Arcadia-Alma Option
- Q1-Galesville Route

Project Features

- Transmission Line Structure
- Segment Endpoint

- Proposed Substation Siting Area

- Right-of-Way
- Access Route

Access Route Waterway Crossings

- Temporary Clear Span Bridge
- Miscellaneous Structure

Identified Natural Resources

- Wetlands Delineated from Aerial Interp.
- Field Sketched Wetlands
- Field Sketched Open Water
- Field Sketched Waterway

Water Features (FEMA, WWI)

- FEMA Floodplain
- Wisconsin Wetland Inventory

WDNR 24K Hydrography

- Intermittent Stream
- Perennial Stream
- Waterbody

NRCS Soils Survey Data

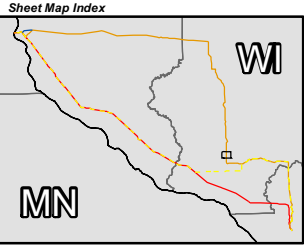
- Hydric Soils
- Possible Hydric Inclusions
- Non-Hydric Soils

Jurisdiction (WDNR)

- State
- County
- Sections
- City, Village or Town

Distribution Lines

- Xcel Distribution Lines
- Riverland Distribution Lines



Data Sources: WDNR, WisDOT, BTS, USGS, PSCW, LMIC, FEMA, WWI, FCC, Platts, Census, Stantec
CapX2020 Environmental Figure

Aerial Photography Published by National Agriculture Imagery Program (NAIP), 2008

CapX2020

Hampton • Rochester • La Crosse 345kV Transmission Project

Xcel Energy • Dairyland Power Cooperative • Rochester Public Utilities • Wisconsin Public Power, Incorporated • Southern Minnesota Municipal Power Agency

Environmental Features

Revised March 2011