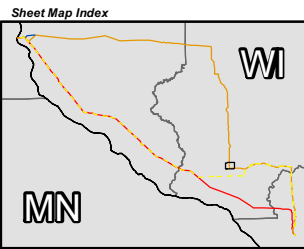




Sheet Map 86

Legend

- Proposed Transmission Line Alternatives**
 - Q1-Highway 35 Route
 - Arcadia Route
 - Arcadia-Alma Option
 - Q1-Galesville Route
- Project Features**
 - Transmission Line Structure
 - Segment Endpoint
 - Proposed Substation Siting Area
 - Right-of-Way
 - Access Route
- Access Route Waterway Crossings**
 - Temporary Clear Span Bridge
 - Miscellaneous Structure
- Identified Natural Resources**
 - Wetlands Delineated from Aerial Interp.
 - Field Sketched Wetlands
 - Field Sketched Open Water
 - Field Sketched Waterway
- Water Features (FEMA, WWI)**
 - FEMA Floodplain
 - Wisconsin Wetland Inventory
- WDNR 24K Hydrography**
 - Intermittent Stream
 - Perennial Stream
 - Waterbody
- NRCS Soils Survey Data**
 - Hydric Soils
 - Possible Hydric Inclusions
 - Non-Hydric Soils
- Jurisdiction (WDNR)**
 - State
 - County
 - Sections
 - City, Village or Town
- Distribution Lines**
 - Xcel Distribution Lines
 - Riverland Distribution Lines



Data Sources: WDNR, WisDOT, BTS, USGS, PSCW, LMIC, FEMA, WWI, FCC, Platts, Census, Stantec
CapX2020 Environmental Figure
Aerial Photography Published by National Agriculture Imagery Program (NAIP), 2008

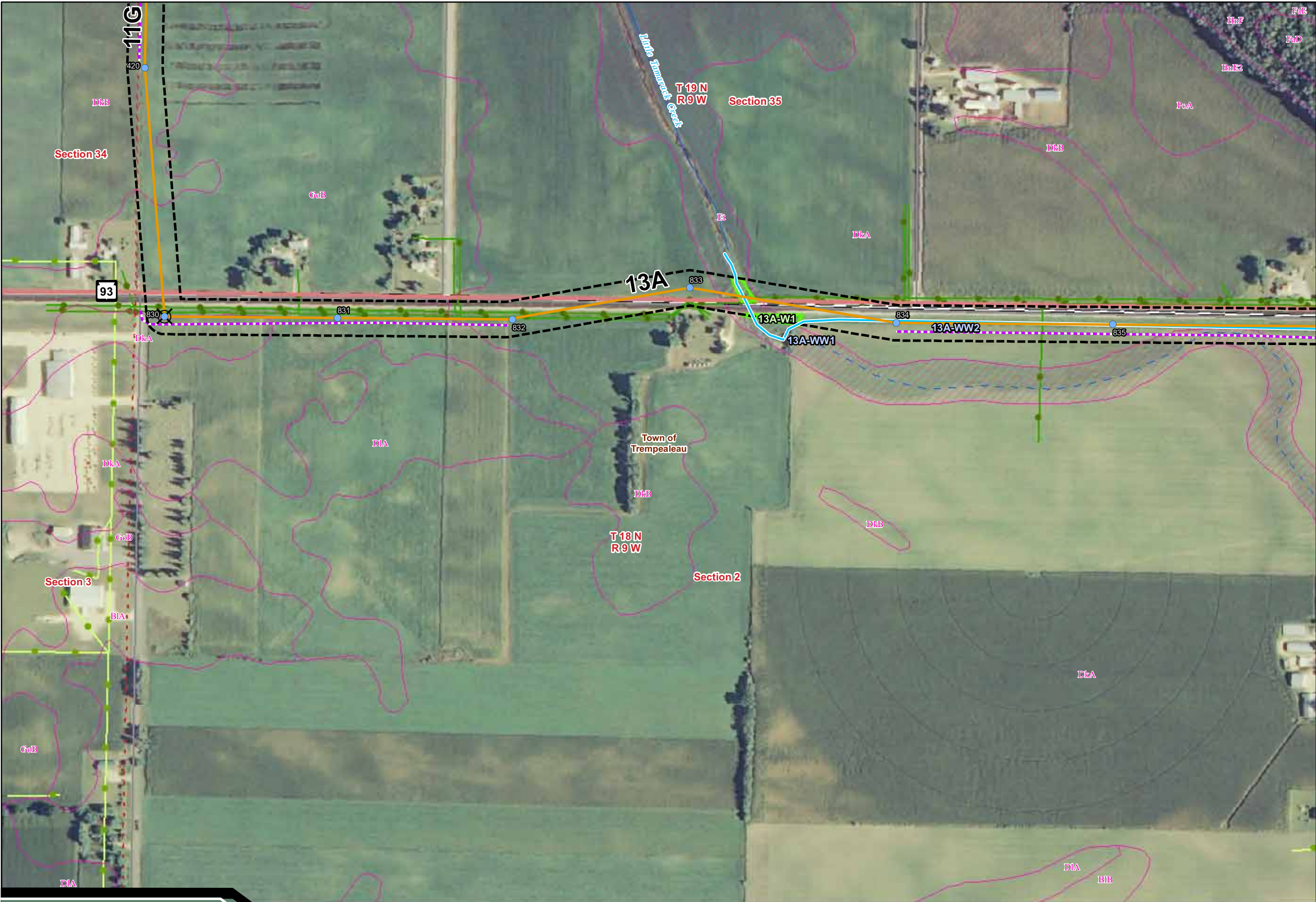
CapX2020

Hampton • Rochester • La Crosse 345kV Transmission Project

Xcel Energy • Dairyland Power Cooperative • Rochester Public Utilities • Wisconsin Public Power, Incorporated • Southern Minnesota Municipal Power Agency

Environmental Features

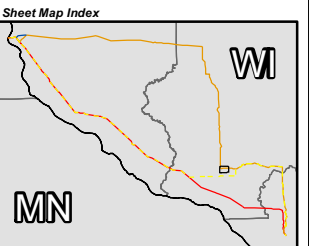
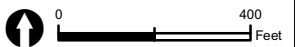
Revised March 2011



Sheet Map 87

Legend

- Proposed Transmission Line Alternatives**
- Q1-Highway 35 Route
 - Arcadia Route
 - Arcadia-Alma Option
 - Q1-Galesville Route
- Project Features**
- Transmission Line Structure
 - Segment Endpoint
 - Proposed Substation Siting Area
 - Right-of-Way
 - Access Route
- Access Route Waterway Crossings**
- Temporary Clear Span Bridge
 - Miscellaneous Structure
- Identified Natural Resources**
- Wetlands Delineated from Aerial Interp.
 - Field Sketched Wetlands
 - Field Sketched Open Water
 - Field Sketched Waterway
- Water Features (FEMA, WWI)**
- FEMA Floodplain
 - Wisconsin Wetland Inventory
- WDNR 24K Hydrography**
- Intermittent Stream
 - Perennial Stream
 - Waterbody
- NRCS Soils Survey Data**
- Hydric Soils
 - Possible Hydric Inclusions
 - Non-Hydric Soils
- Jurisdiction (WDNR)**
- State
 - County
 - Sections
 - City, Village or Town
- Distribution Lines**
- Xcel Distribution Lines
 - Riverland Distribution Lines



Data Sources: WDNR, WisDOT, BTS, USGS, PSCW, LMIC, FEMA, WWI, FCC, Platts, Census, Stantec
CapX2020 Environmental Figure

Aerial Photography Published by National Agriculture Imagery Program (NAIP), 2008

CapX2020

Hampton • Rochester • La Crosse 345kV Transmission Project

Xcel Energy • Dairyland Power Cooperative • Rochester Public Utilities • Wisconsin Public Power, Incorporated • Southern Minnesota Municipal Power Agency

Environmental Features

Revised March 2011

Sheet Map 88

Legend

Proposed Transmission Line Alternatives

- Q1-Highway 35 Route
- Arcadia Route
- Arcadia-Alma Option
- Q1-Galesville Route

Project Features

- Transmission Line Structure
- Segment Endpoint
- Proposed Substation Siting Area
- Right-of-Way
- Access Route

Access Route Waterway Crossings

- Temporary Clear Span Bridge
- Miscellaneous Structure

Identified Natural Resources

- Wetlands Delineated from Aerial Interp.
- Field Sketched Wetlands
- Field Sketched Open Water
- Field Sketched Waterway

Water Features (FEMA, WWI)

- FEMA Floodplain
- Wisconsin Wetland Inventory

WDNR 24K Hydrography

- Intermittent Stream
- Perennial Stream
- Waterbody

NRCS Soils Survey Data

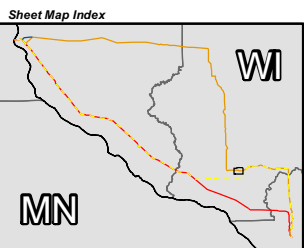
- Hydric Soils
- Possible Hydric Inclusions
- Non-Hydric Soils

Jurisdiction (WDNR)

- State
- County
- Sections
- City, Village or Town

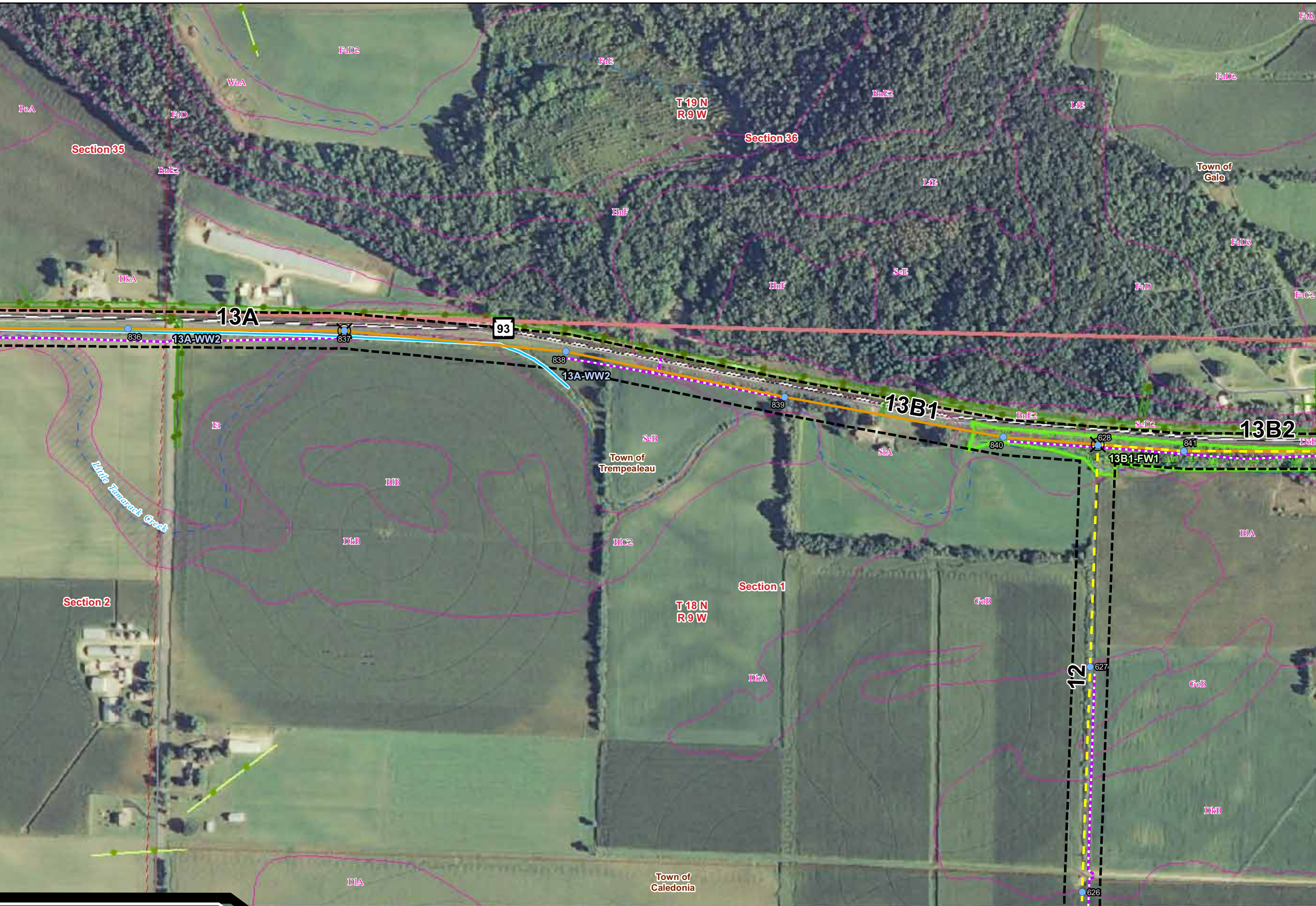
Distribution Lines

- Xcel Distribution Lines
- Riverland Distribution Lines



Data Sources: WDNR, WisDOT, BTS, USGS, PSCW, LMIC, FEMA, WWI, FCC, Platts, Census, Stantec
CapX2020 Environmental Figure

Aerial Photography Published by National Agriculture Imagery Program (NAIP), 2008



CapX2020

Hampton • Rochester • La Crosse 345kV Transmission Project

Xcel Energy • Dairyland Power Cooperative • Rochester Public Utilities • Wisconsin Public Power, Incorporated • Southern Minnesota Municipal Power Agency

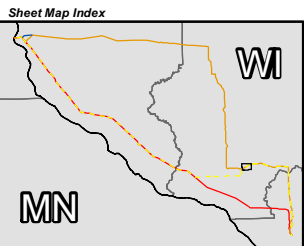
Environmental Features

Revised March 2011

Sheet Map 89

Legend

- Proposed Transmission Line Alternatives**
- Q1-Highway 35 Route
 - Arcadia Route
 - Arcadia-Alma Option
 - Q1-Galesville Route
- Project Features**
- Transmission Line Structure
 - Segment Endpoint
 - Proposed Substation Siting Area
 - Right-of-Way
 - Access Route
- Access Route Waterway Crossings**
- Temporary Clear Span Bridge
 - Miscellaneous Structure
- Identified Natural Resources**
- Wetlands Delineated from Aerial Interp.
 - Field Sketched Wetlands
 - Field Sketched Open Water
 - Field Sketched Waterway
- Water Features (FEMA, WWI)**
- FEMA Floodplain
 - Wisconsin Wetland Inventory
- WDNR 24K Hydrography**
- Intermittent Stream
 - Perennial Stream
 - Waterbody
- NRCS Soils Survey Data**
- Hydric Soils
 - Possible Hydric Inclusions
 - Non-Hydric Soils
- Jurisdiction (WDNR)**
- State
 - County
 - Sections
 - City, Village or Town
- Distribution Lines**
- Xcel Distribution Lines
 - Riverland Distribution Lines



Data Sources: WDNR, WisDOT, BTS, USGS, PSCW, LMIC, FEMA, WWI, FCC, Platts, Census, Stantec
CapX2020 Environmental Figure

Aerial Photography Published by National Agriculture Imagery Program (NAIP), 2008



CapX2020

Hampton • Rochester • La Crosse 345kV Transmission Project

Xcel Energy • Dairyland Power Cooperative • Rochester Public Utilities • Wisconsin Public Power, Incorporated • Southern Minnesota Municipal Power Agency

Environmental Features

Revised March 2011

Sheet Map 90

Legend

Proposed Transmission Line Alternatives

- Q1-Highway 35 Route
- Arcadia Route
- Arcadia-Alma Option
- Q1-Galesville Route

Project Features

- Transmission Line Structure
- Segment Endpoint

Proposed Substation Siting Area

- Right-of-Way
- Access Route

Access Route Waterway Crossings

- Temporary Clear Span Bridge
- Miscellaneous Structure

Identified Natural Resources

- Wetlands Delineated from Aerial Interpret.
- Field Sketched Wetlands
- Field Sketched Open Water
- Field Sketched Waterway

Water Features (FEMA, WWI)

- FEMA Floodplain
- Wisconsin Wetland Inventory

WDNR 24K Hydrography

- Intermittent Stream
- Perennial Stream
- Waterbody

NRCS Soils Survey Data

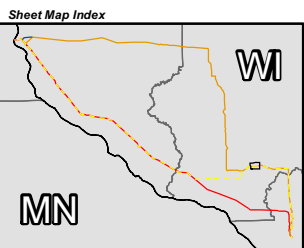
- Hydric Soils
- Possible Hydric Inclusions
- Non-Hydric Soils

Jurisdiction (WDNR)

- State
- County
- Sections
- City, Village or Town

Distribution Lines

- Xcel Distribution Lines
- Riverland Distribution Lines



Data Sources: WDNR, WisDOT, BTS, USGS, PSCW, LMIC, FEMA, WWI, FCC, Platts, Census, Stantec
CapX2020 Environmental Figure

Aerial Photography Published by National Agriculture Imagery Program (NAIP), 2008



CapX2020

Hampton • Rochester • La Crosse 345kV Transmission Project

Xcel Energy • Dairyland Power Cooperative • Rochester Public Utilities • Wisconsin Public Power, Incorporated • Southern Minnesota Municipal Power Agency

Environmental Features

Revised March 2011

Sheet Map 91

Legend

Proposed Transmission Line Alternatives

- Q1-Highway 35 Route
- Arcadia Route
- Arcadia-Alma Option
- Q1-Galesville Route

Project Features

- Transmission Line Structure
- Segment Endpoint

- Proposed Substation Siting Area

- Right-of-Way
- Access Route

Access Route Waterway Crossings

- Temporary Clear Span Bridge
- Miscellaneous Structure

Identified Natural Resources

- Wetlands Delineated from Aerial Interp.
- Field Sketched Wetlands
- Field Sketched Open Water
- Field Sketched Waterway

Water Features (FEMA, WWI)

- FEMA Floodplain
- Wisconsin Wetland Inventory

WDNR 24K Hydrography

- Intermittent Stream
- Perennial Stream
- Waterbody

NRCS Soils Survey Data

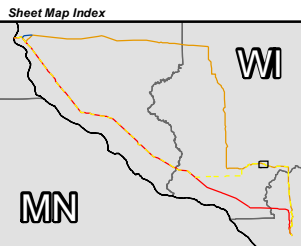
- Hydric Soils
- Possible Hydric Inclusions
- Non-Hydric Soils

Jurisdiction (WDNR)

- State
- County
- Sections
- City, Village or Town

Distribution Lines

- Xcel Distribution Lines
- Riverland Distribution Lines



Data Sources: WDNR, WisDOT, BTS, USGS, PSCW, LMIC, FEMA, WWI, FCC, Platts, Census, Stantec
CapX2020 Environmental Figure

Aerial Photography Published by National Agriculture Imagery Program (NAIP), 2008

CapX2020

Hampton • Rochester • La Crosse 345kV Transmission Project

Xcel Energy • Dairyland Power Cooperative • Rochester Public Utilities • Wisconsin Public Power, Incorporated • Southern Minnesota Municipal Power Agency

Environmental Features

Revised March 2011

Sheet Map 92

Legend

Proposed Transmission Line Alternatives

- Q1-Highway 35 Route
- Arcadia Route
- Arcadia-Alma Option
- Q1-Galesville Route

Project Features

- Transmission Line Structure
- Segment Endpoint

- Proposed Substation Siting Area

- Right-of-Way
- Access Route

Access Route Waterway Crossings

- Temporary Clear Span Bridge
- Miscellaneous Structure

Identified Natural Resources

- Wetlands Delineated from Aerial Interp.
- Field Sketched Wetlands
- Field Sketched Open Water
- Field Sketched Waterway

Water Features (FEMA, WWI)

- FEMA Floodplain
- Wisconsin Wetland Inventory

WDNR 24K Hydrography

- Intermittent Stream
- Perennial Stream
- Waterbody

NRCS Soils Survey Data

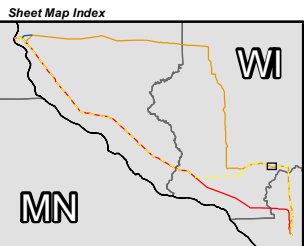
- Hydric Soils
- Possible Hydric Inclusions
- Non-Hydric Soils

Jurisdiction (WDNR)

- State
- County
- Sections
- City, Village or Town

Distribution Lines

- Xcel Distribution Lines
- Riverland Distribution Lines



Data Sources: WDNR, WisDOT, BTS, USGS, PSCW, LMIC, FEMA, WWI, FCC, Platts, Census, Stantec
CapX2020 Environmental Figure

Aerial Photography Published by National Agriculture Imagery Program (NAIP), 2008

CapX2020

Hampton • Rochester • La Crosse 345kV Transmission Project

Xcel Energy • Dairyland Power Cooperative • Rochester Public Utilities • Wisconsin Public Power, Incorporated • Southern Minnesota Municipal Power Agency

Environmental Features

Revised March 2011

Sheet Map 93

Legend

Proposed Transmission Line Alternatives

- Q1-Highway 35 Route
- Arcadia Route
- Arcadia-Alma Option
- Q1-Galesville Route

Project Features

- Transmission Line Structure
- Segment Endpoint
- Proposed Substation Siting Area
- Right-of-Way
- Access Route

Access Route Waterway Crossings

- Temporary Clear Span Bridge
- Miscellaneous Structure

Identified Natural Resources

- Wetlands Delineated from Aerial Interp.
- Field Sketched Wetlands
- Field Sketched Open Water
- Field Sketched Waterway

Water Features (FEMA, WWI)

- FEMA Floodplain
- Wisconsin Wetland Inventory

WDNR 24K Hydrography

- Intermittent Stream
- Perennial Stream
- Waterbody

NRCS Soils Survey Data

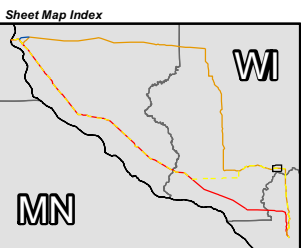
- Hydric Soils
- Possible Hydric Inclusions
- Non-Hydric Soils

Jurisdiction (WDNR)

- State
- County
- Sections
- City, Village or Town

Distribution Lines

- Xcel Distribution Lines
- Riverland Distribution Lines



Data Sources: WDNR, WisDOT, BTS, USGS, PSCW, LMIC, FEMA, WWI, FCC, Platts, Census, Stantec
CapX2020 Environmental Figure

Aerial Photography Published by National Agriculture Imagery Program (NAIP), 2008

CapX2020

Hampton • Rochester • La Crosse 345kV Transmission Project

Xcel Energy • Dairyland Power Cooperative • Rochester Public Utilities • Wisconsin Public Power, Incorporated • Southern Minnesota Municipal Power Agency

Environmental Features

Revised March 2011

Sheet Map 94

Legend

Proposed Transmission Line Alternatives

- Q1-Highway 35 Route
- Arcadia Route
- Arcadia-Alma Option
- Q1-Galesville Route

Project Features

- Transmission Line Structure
- Segment Endpoint

- Proposed Substation Siting Area

- Right-of-Way
- Access Route

Access Route Waterway Crossings

- Temporary Clear Span Bridge
- Miscellaneous Structure

Identified Natural Resources

- Wetlands Delineated from Aerial Interpret.
- Field Sketched Wetlands
- Field Sketched Open Water
- Field Sketched Waterway

Water Features (FEMA, WWI)

- FEMA Floodplain
- Wisconsin Wetland Inventory

WDNR 24K Hydrography

- Intermittent Stream
- Perennial Stream
- Waterbody

NRCS Soils Survey Data

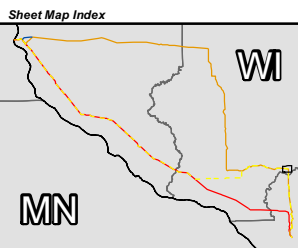
- Hydric Soils
- Possible Hydric Inclusions
- Non-Hydric Soils

Jurisdiction (WDNR)

- State
- County
- Sections
- City, Village or Town

Distribution Lines

- Xcel Distribution Lines
- Riverland Distribution Lines



Data Sources: WDNR, WisDOT, BTS, USGS, PSCW, LMIC, FEMA, WWI, FCC, Platts, Census, Stantec
CapX2020 Environmental Figure

Aerial Photography Published by National Agriculture Imagery Program (NAIP), 2008

CapX2020

Hampton • Rochester • La Crosse 345kV Transmission Project

Xcel Energy • Dairyland Power Cooperative • Rochester Public Utilities • Wisconsin Public Power, Incorporated • Southern Minnesota Municipal Power Agency

Environmental Features

Revised March 2011

Sheet Map 95

Legend

Proposed Transmission Line Alternatives

- Q1-Highway 35 Route
- Arcadia Route
- Arcadia-Alma Option
- Q1-Galesville Route

Project Features

- Transmission Line Structure
- Segment Endpoint
- Proposed Substation Siting Area
- Right-of-Way
- Access Route

Access Route Waterway Crossings

- Temporary Clear Span Bridge
- Miscellaneous Structure

Identified Natural Resources

- Wetlands Delineated from Aerial Interp.
- Field Sketched Wetlands
- Field Sketched Open Water
- Field Sketched Waterway

Water Features (FEMA, WWI)

- FEMA Floodplain
- Wisconsin Wetland Inventory

WDNR 24K Hydrography

- Intermittent Stream
- Perennial Stream
- Waterbody

NRCS Soils Survey Data

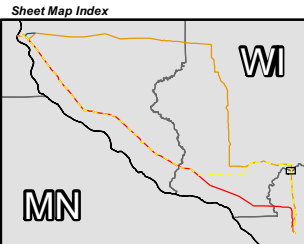
- Hydric Soils
- Possible Hydric Inclusions
- Non-Hydric Soils

Jurisdiction (WDNR)

- State
- County
- Sections
- City, Village or Town

Distribution Lines

- Xcel Distribution Lines
- Riverland Distribution Lines



Data Sources: WDNR, WisDOT, BTS, USGS, PSCW, LMIC, FEMA, WWI, FCC, Platts, Census, Stantec
CapX2020 Environmental Figure

Aerial Photography Published by National Agriculture Imagery Program (NAIP), 2008

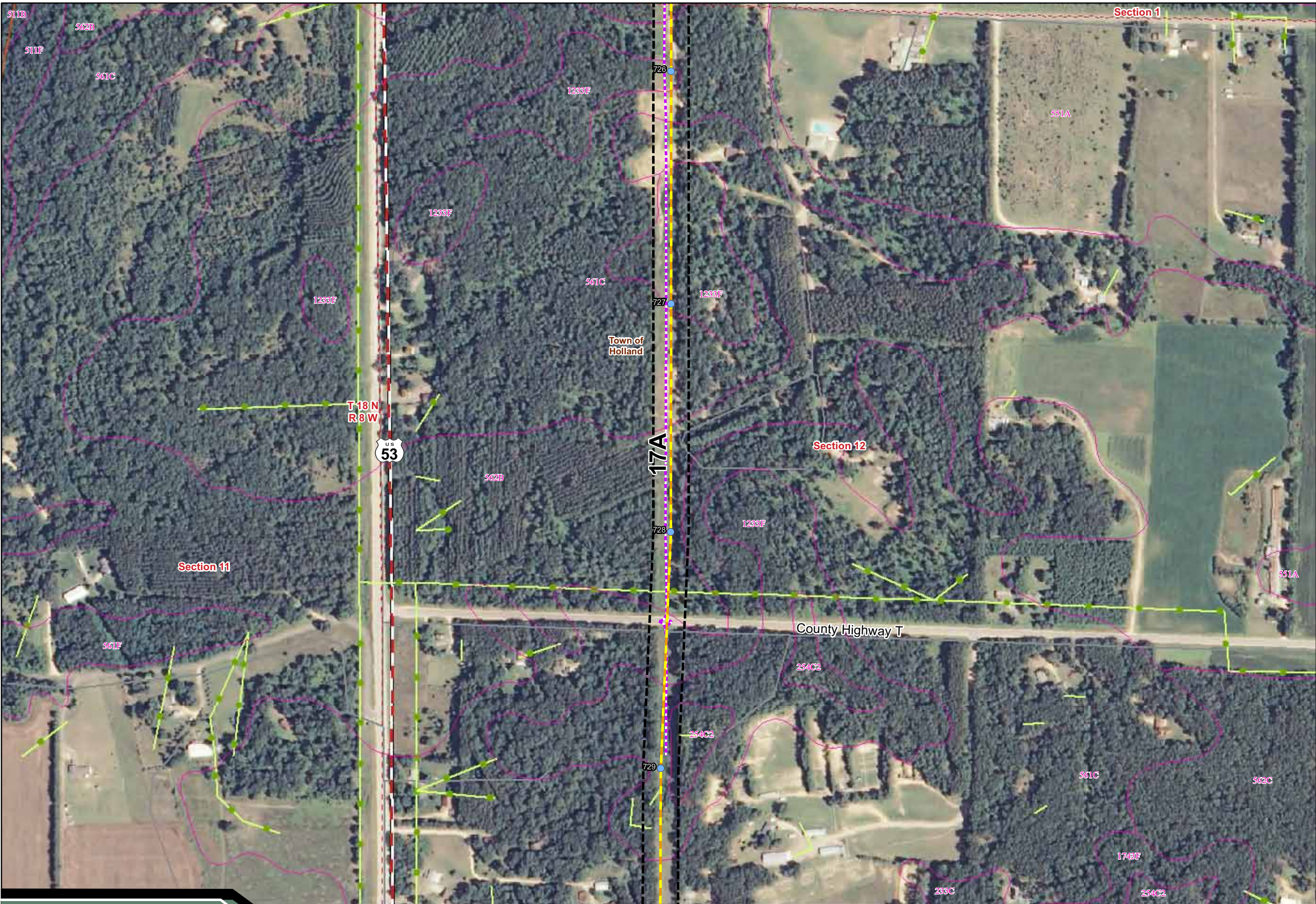
CapX2020

Hampton • Rochester • La Crosse 345kV Transmission Project

Xcel Energy • Dairyland Power Cooperative • Rochester Public Utilities • Wisconsin Public Power, Incorporated • Southern Minnesota Municipal Power Agency

Environmental Features

Revised March 2011



Sheet Map 96

Legend

Proposed Transmission Line Alternatives

- Q1-Highway 35 Route
- Arcadia Route
- Arcadia-Alma Option
- Q1-Galesville Route

Project Features

- Transmission Line Structure
- Segment Endpoint

- Proposed Substation Siting Area

- Right-of-Way
- Access Route

Access Route Waterway Crossings

- Temporary Clear Span Bridge
- Miscellaneous Structure

Identified Natural Resources

- Wetlands Delineated from Aerial Interp.
- Field Sketched Wetlands
- Field Sketched Open Water
- Field Sketched Waterway

Water Features (FEMA, WWI)

- FEMA Floodplain
- Wisconsin Wetland Inventory

WDNR 24K Hydrography

- Intermittent Stream
- Perennial Stream
- Waterbody

NRCS Soils Survey Data

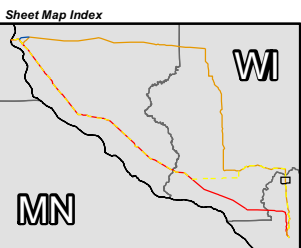
- Hydric Soils
- Possible Hydric Inclusions
- Non-Hydric Soils

Jurisdiction (WDNR)

- State
- County
- Sections
- City, Village or Town

Distribution Lines

- Xcel Distribution Lines
- Riverland Distribution Lines



Data Sources: WDNR, WisDOT, BTS, USGS, PSCW, LMIC, FEMA, WWI, FCC, Platts, Census, Stantec
CapX2020 Environmental Figure

Aerial Photography Published by National Agriculture Imagery Program (NAIP), 2008

CapX2020

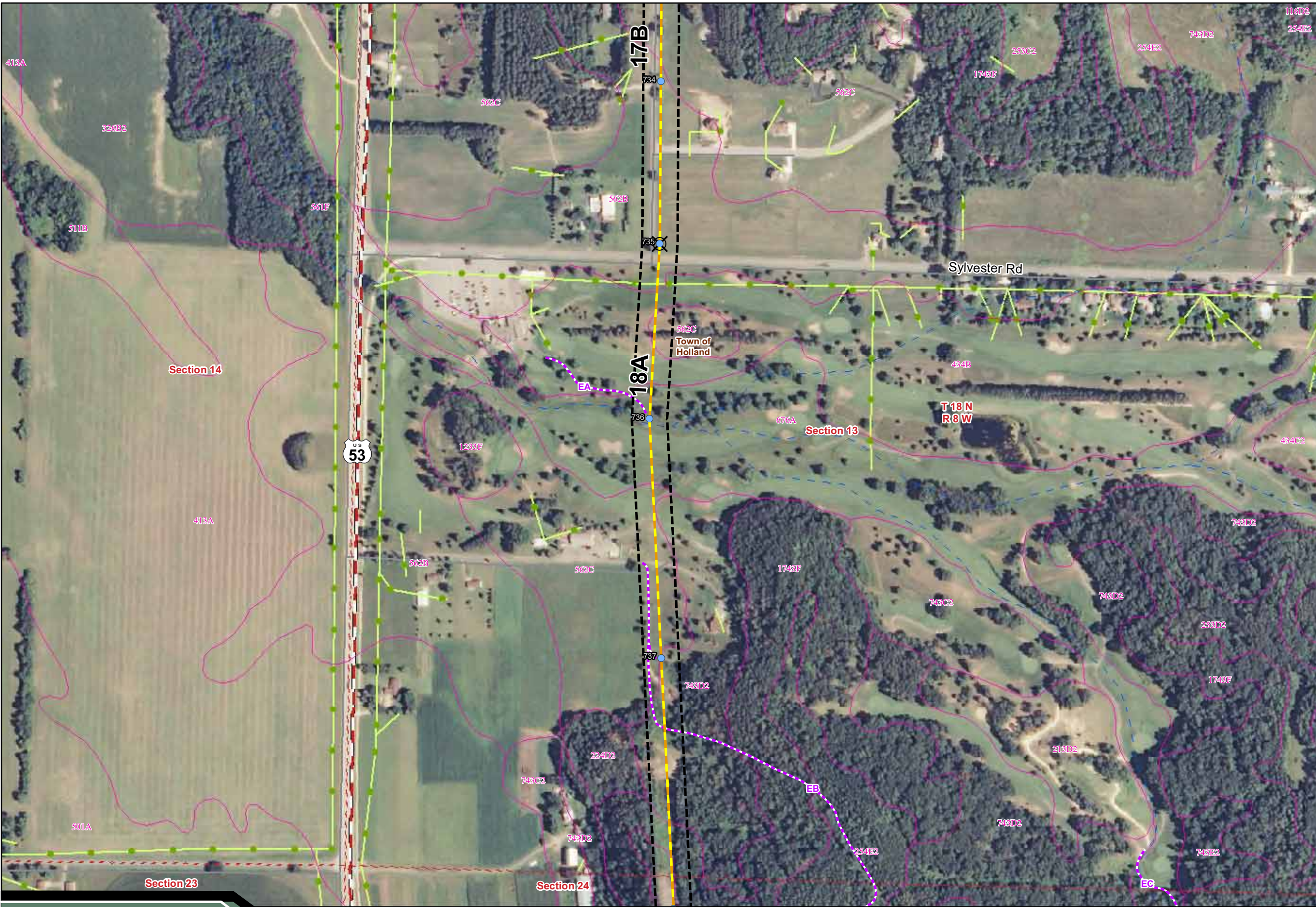
Hampton • Rochester • La Crosse 345kV Transmission Project

Xcel Energy • Dairyland Power Cooperative • Rochester Public Utilities • Wisconsin Public Power, Incorporated • Southern Minnesota Municipal Power Agency

Environmental Features

Revised March 2011







Sheet Map 100

Legend

Proposed Transmission Line Alternatives

- Q1-Highway 35 Route
- Arcadia Route
- Arcadia-Alma Option
- Q1-Galesville Route

Project Features

- Transmission Line Structure
- Segment Endpoint
- Proposed Substation Siting Area
- Right-of-Way
- Access Route

Access Route Waterway Crossings

- Temporary Clear Span Bridge
- Miscellaneous Structure

Identified Natural Resources

- Wetlands Delineated from Aerial Interp.
- Field Sketched Wetlands
- Field Sketched Open Water
- Field Sketched Waterway

Water Features (FEMA, WWI)

- FEMA Floodplain
- Wisconsin Wetland Inventory

WDNR 24K Hydrography

- Intermittent Stream
- Perennial Stream
- Waterbody

NRCS Soils Survey Data

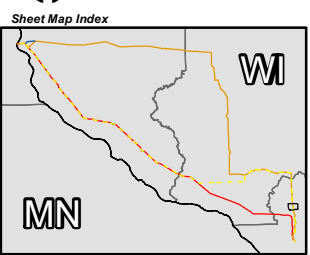
- Hydric Soils
- Possible Hydric Inclusions
- Non-Hydric Soils

Jurisdiction (WDNR)

- State
- County
- Sections
- City, Village or Town

Distribution Lines

- Xcel Distribution Lines
- Riverland Distribution Lines



Data Sources: WDNR, WisDOT, BTS, USGS, PSCW, LMIC, FEMA, WWI, FCC, Platts, Census, Stantec
CapX2020 Environmental Figure

Aerial Photography Published by National Agriculture Imagery Program (NAIP), 2008





Sheet Map 101

Legend

Proposed Transmission Line Alternatives

- Q1-Highway 35 Route
- Arcadia Route
- Arcadia-Alma Option
- Q1-Galesville Route

Project Features

- Transmission Line Structure
- Segment Endpoint
- Proposed Substation Siting Area
- Right-of-Way
- Access Route

Access Route Waterway Crossings

- Temporary Clear Span Bridge
- Miscellaneous Structure

Identified Natural Resources

- Wetlands Delineated from Aerial Interp.
- Field Sketched Wetlands
- Field Sketched Open Water
- Field Sketched Waterway

Water Features (FEMA, WWI)

- FEMA Floodplain
- Wisconsin Wetland Inventory

WDNR 24K Hydrography

- Intermittent Stream
- Perennial Stream
- Waterbody

NRCS Soils Survey Data

- Hydric Soils
- Possible Hydric Inclusions
- Non-Hydric Soils

Jurisdiction (WDNR)

- State
- County
- Sections
- City, Village or Town

Distribution Lines

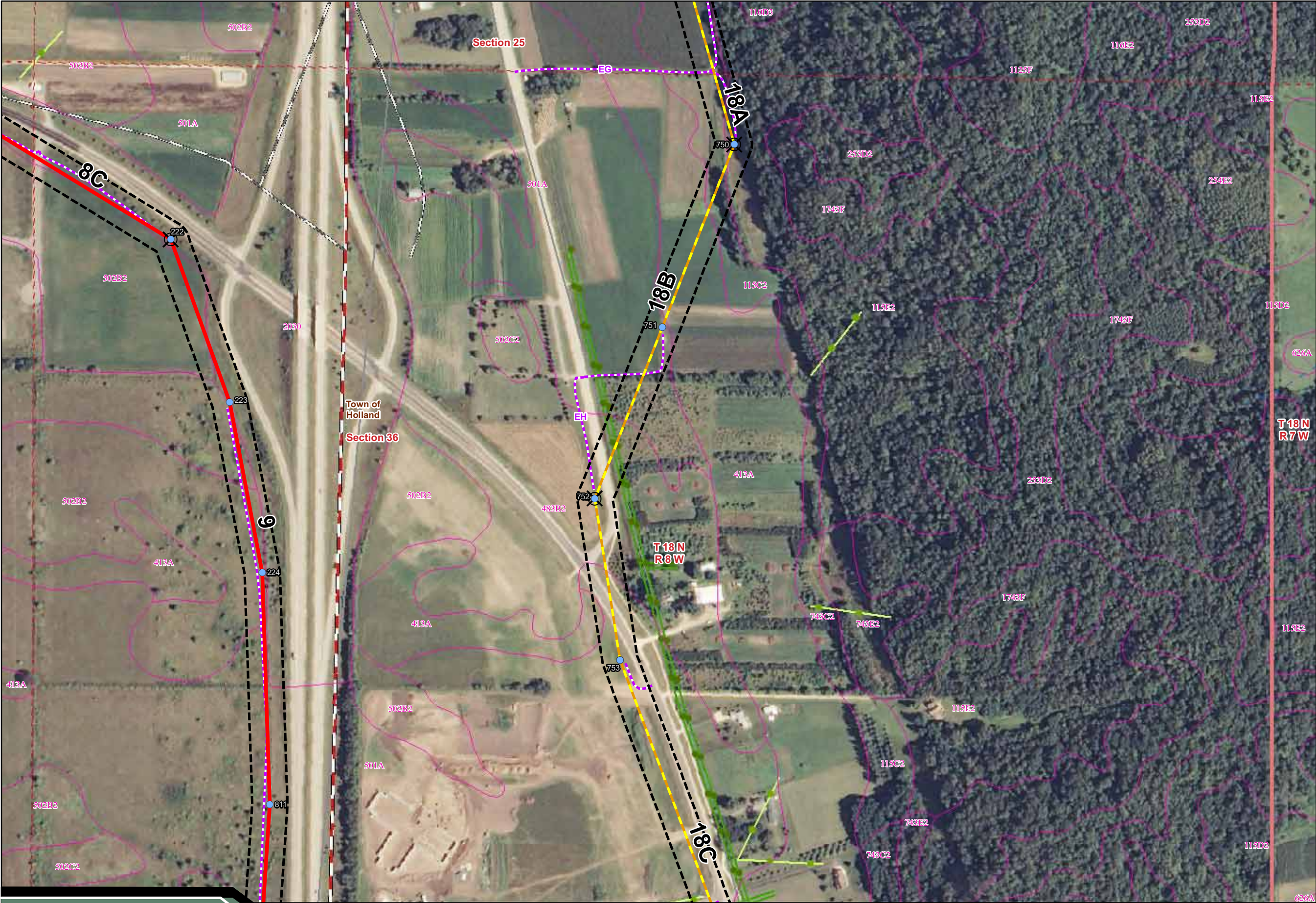
- Xcel Distribution Lines
- Riverland Distribution Lines

0 400 Feet

Sheet Map Index

Data Sources: WDNR, WisDOT, BTS, USGS, PSCW, LMIC, FEMA, WWI, FCC, Platts, Census, Stantec
CapX2020 Environmental Figure

Aerial Photography Published by National Agriculture Imagery Program (NAIP), 2008



Sheet Map 102

Legend

Proposed Transmission Line Alternatives

- Q1-Highway 35 Route
- Arcadia Route
- Arcadia-Alma Option
- Q1-Galesville Route

Project Features

- Transmission Line Structure
- Segment Endpoint
- Proposed Substation Siting Area
- Right-of-Way
- Access Route

Access Route Waterway Crossings

- Temporary Clear Span Bridge
- Miscellaneous Structure

Identified Natural Resources

- Wetlands Delineated from Aerial Interp.
- Field Sketched Wetlands
- Field Sketched Open Water
- Field Sketched Waterway

Water Features (FEMA, WWI)

- FEMA Floodplain
- Wisconsin Wetland Inventory

WDNR 24K Hydrography

- Intermittent Stream
- Perennial Stream
- Waterbody

NRCS Soils Survey Data

- Hydric Soils
- Possible Hydric Inclusions
- Non-Hydric Soils

Jurisdiction (WDNR)

- State
- County
- Sections
- City, Village or Town

Distribution Lines

- Xcel Distribution Lines
- Riverland Distribution Lines

0 400 Feet

Sheet Map Index

Data Sources: WDNR, WisDOT, BTS, USGS, PSCW, LMIC, FEMA, WWI, FCC, Platts, Census, Stantec
CapX2020 Environmental Figure

Aerial Photography Published by National Agriculture Imagery Program (NAIP), 2008

Sheet Map 103

Legend

Proposed Transmission Line Alternatives

- Q1-Highway 35 Route
- Arcadia Route
- Arcadia-Alma Option
- Q1-Galesville Route

Project Features

- Transmission Line Structure
- Segment Endpoint
- Proposed Substation Siting Area
- Right-of-Way
- Access Route

Access Route Waterway Crossings

- Temporary Clear Span Bridge
- Miscellaneous Structure

Identified Natural Resources

- Wetlands Delineated from Aerial Interp.
- Field Sketched Wetlands
- Field Sketched Open Water
- Field Sketched Waterway

Water Features (FEMA, WWI)

- FEMA Floodplain
- Wisconsin Wetland Inventory

WDNR 24K Hydrography

- Intermittent Stream
- Perennial Stream
- Waterbody

NRCS Soils Survey Data

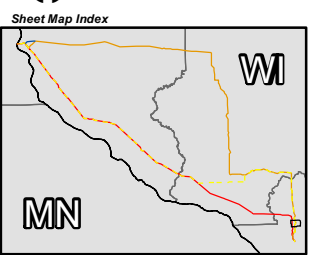
- Hydric Soils
- Possible Hydric Inclusions
- Non-Hydric Soils

Jurisdiction (WDNR)

- State
- County
- Sections
- City, Village or Town

Distribution Lines

- Xcel Distribution Lines
- Riverland Distribution Lines



Data Sources: WDNR, WisDOT, BTS, USGS, PSCW, LMIC, FEMA, WWI, FCC, Platts, Census, Stantec
CapX2020 Environmental Figure

Aerial Photography Published by National Agriculture Imagery Program (NAIP), 2008

CapX2020

Hampton • Rochester • La Crosse 345kV Transmission Project

Xcel Energy • Dairyland Power Cooperative • Rochester Public Utilities • Wisconsin Public Power, Incorporated • Southern Minnesota Municipal Power Agency

Environmental Features

Revised March 2011



Sheet Map 104

Legend

Proposed Transmission Line Alternatives

- Q1-Highway 35 Route
- Arcadia Route
- Arcadia-Alma Option
- Q1-Galesville Route

Project Features

- Transmission Line Structure
- Segment Endpoint
- Proposed Substation Siting Area
- Right-of-Way
- Access Route

Access Route Waterway Crossings

- Temporary Clear Span Bridge
- Miscellaneous Structure

Identified Natural Resources

- Wetlands Delineated from Aerial Interp.
- Field Sketched Wetlands
- Field Sketched Open Water
- Field Sketched Waterway

Water Features (FEMA, WWI)

- FEMA Floodplain
- Wisconsin Wetland Inventory

WDNR 24K Hydrography

- Intermittent Stream
- Perennial Stream
- Waterbody

NRCS Soils Survey Data

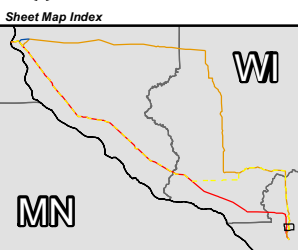
- Hydric Soils
- Possible Hydric Inclusions
- Non-Hydric Soils

Jurisdiction (WDNR)

- State
- County
- Sections
- City, Village or Town

Distribution Lines

- Xcel Distribution Lines
- Riverland Distribution Lines



Data Sources: WDNR, WisDOT, BTS, USGS, PSCW, LMIC, FEMA, WWI, FCC, Platts, Census, Stantec
CapX2020 Environmental Figure

Aerial Photography Published by National Agriculture Imagery Program (NAIP), 2008

CapX2020

Hampton • Rochester • La Crosse 345kV Transmission Project

Xcel Energy • Dairyland Power Cooperative • Rochester Public Utilities • Wisconsin Public Power, Incorporated • Southern Minnesota Municipal Power Agency

Environmental Features

Revised March 2011



Sheet Map 105

Legend

Proposed Transmission Line Alternatives

- Q1-Highway 35 Route
- Arcadia Route
- Arcadia-Alma Option
- Q1-Galesville Route

Project Features

- Transmission Line Structure
- Segment Endpoint
- Proposed Substation Siting Area
- Right-of-Way
- Access Route

Access Route Waterway Crossings

- Temporary Clear Span Bridge
- Miscellaneous Structure

Identified Natural Resources

- Wetlands Delineated from Aerial Interp.
- Field Sketched Wetlands
- Field Sketched Open Water
- Field Sketched Waterway

Water Features (FEMA, WWI)

- FEMA Floodplain
- Wisconsin Wetland Inventory

WDNR 24K Hydrography

- Intermittent Stream
- Perennial Stream
- Waterbody

NRCS Soils Survey Data

- Hydric Soils
- Possible Hydric Inclusions
- Non-Hydric Soils

Jurisdiction (WDNR)

- State
- County
- Sections
- City, Village or Town

Distribution Lines

- Xcel Distribution Lines
- Riverland Distribution Lines

0 400 Feet

Sheet Map Index

Data Sources: WDNR, WisDOT, BTS, USGS, PSCW, LMIC, FEMA, WWI, FCC, Platts, Census, Stantec
CapX2020 Environmental Figure

Aerial Photography Published by National Agriculture Imagery Program (NAIP), 2008



Sheet Map 106

Legend

Proposed Transmission Line Alternatives

- Q1-Highway 35 Route
- Arcadia Route
- Arcadia-Alma Option
- Q1-Galesville Route

Project Features

- Transmission Line Structure
- Segment Endpoint
- Proposed Substation Siting Area
- Right-of-Way
- Access Route

Access Route Waterway Crossings

- Temporary Clear Span Bridge
- Miscellaneous Structure

Identified Natural Resources

- Wetlands Delineated from Aerial Interp.
- Field Sketched Wetlands
- Field Sketched Open Water
- Field Sketched Waterway

Water Features (FEMA, WWI)

- FEMA Floodplain
- Wisconsin Wetland Inventory

WDNR 24K Hydrography

- Intermittent Stream
- Perennial Stream
- Waterbody

NRCS Soils Survey Data

- Hydric Soils
- Possible Hydric Inclusions
- Non-Hydric Soils

Jurisdiction (WDNR)

- State
- County
- Sections
- City, Village or Town

Distribution Lines

- Xcel Distribution Lines
- Riverland Distribution Lines

0 400 Feet

Sheet Map Index

Data Sources: WDNR, WisDOT, BTS, USGS, PSCW, LMIC, FEMA, WWI, FCC, Platts, Census, Stantec
CapX2020 Environmental Figure

Aerial Photography Published by National Agriculture Imagery Program (NAIP), 2008

Sheet Map 107

Legend

Proposed Transmission Line Alternatives

- Q1-Highway 35 Route
- Arcadia Route
- Arcadia-Alma Option
- Q1-Galesville Route

Project Features

- Transmission Line Structure
- Segment Endpoint

- Proposed Substation Siting Area
- Right-of-Way

- Access Route

Access Route Waterway Crossings

- Temporary Clear Span Bridge
- Miscellaneous Structure

Identified Natural Resources

- Wetlands Delineated from Aerial Interp.
- Field Sketched Wetlands
- Field Sketched Open Water
- Field Sketched Waterway

Water Features (FEMA, WWI)

- FEMA Floodplain
- Wisconsin Wetland Inventory

WDNR 24K Hydrography

- Intermittent Stream
- Perennial Stream
- Waterbody

NRCS Soils Survey Data

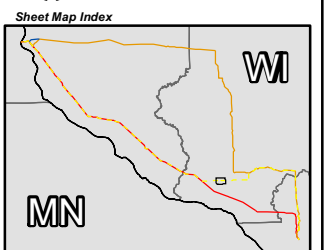
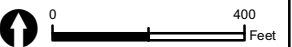
- Hydric Soils
- Possible Hydric Inclusions
- Non-Hydric Soils

Jurisdiction (WDNR)

- State
- County
- Sections
- City, Village or Town

Distribution Lines

- Xcel Distribution Lines
- Riverland Distribution Lines



Data Sources: WDNR, WisDOT, BTS, USGS, PSCW, LMIC, FEMA, WWI, FCC, Platts, Census, Stantec
CapX2020 Environmental Figure

Aerial Photography Published by National Agriculture Imagery Program (NAIP), 2008



CapX2020

Hampton • Rochester • La Crosse 345kV Transmission Project

Xcel Energy • Dairyland Power Cooperative • Rochester Public Utilities • Wisconsin Public Power, Incorporated • Southern Minnesota Municipal Power Agency

Environmental Features

Revised March 2011



Sheet Map 108

Legend

Proposed Transmission Line Alternatives

- Q1-Highway 35 Route
- Arcadia Route
- Arcadia-Alma Option
- Q1-Galesville Route

Project Features

- Transmission Line Structure
- Segment Endpoint
- Proposed Substation Siting Area
- Right-of-Way
- Access Route

Access Route Waterway Crossings

- Temporary Clear Span Bridge
- Miscellaneous Structure

Identified Natural Resources

- Wetlands Delineated from Aerial Interp.
- Field Sketched Wetlands
- Field Sketched Open Water
- Field Sketched Waterway

Water Features (FEMA, WWI)

- FEMA Floodplain
- Wisconsin Wetland Inventory

WDNR 24K Hydrography

- Intermittent Stream
- Perennial Stream
- Waterbody

NRCS Soils Survey Data

- Hydric Soils
- Possible Hydric Inclusions
- Non-Hydric Soils

Jurisdiction (WDNR)

- State
- County
- Sections
- City, Village or Town

Distribution Lines

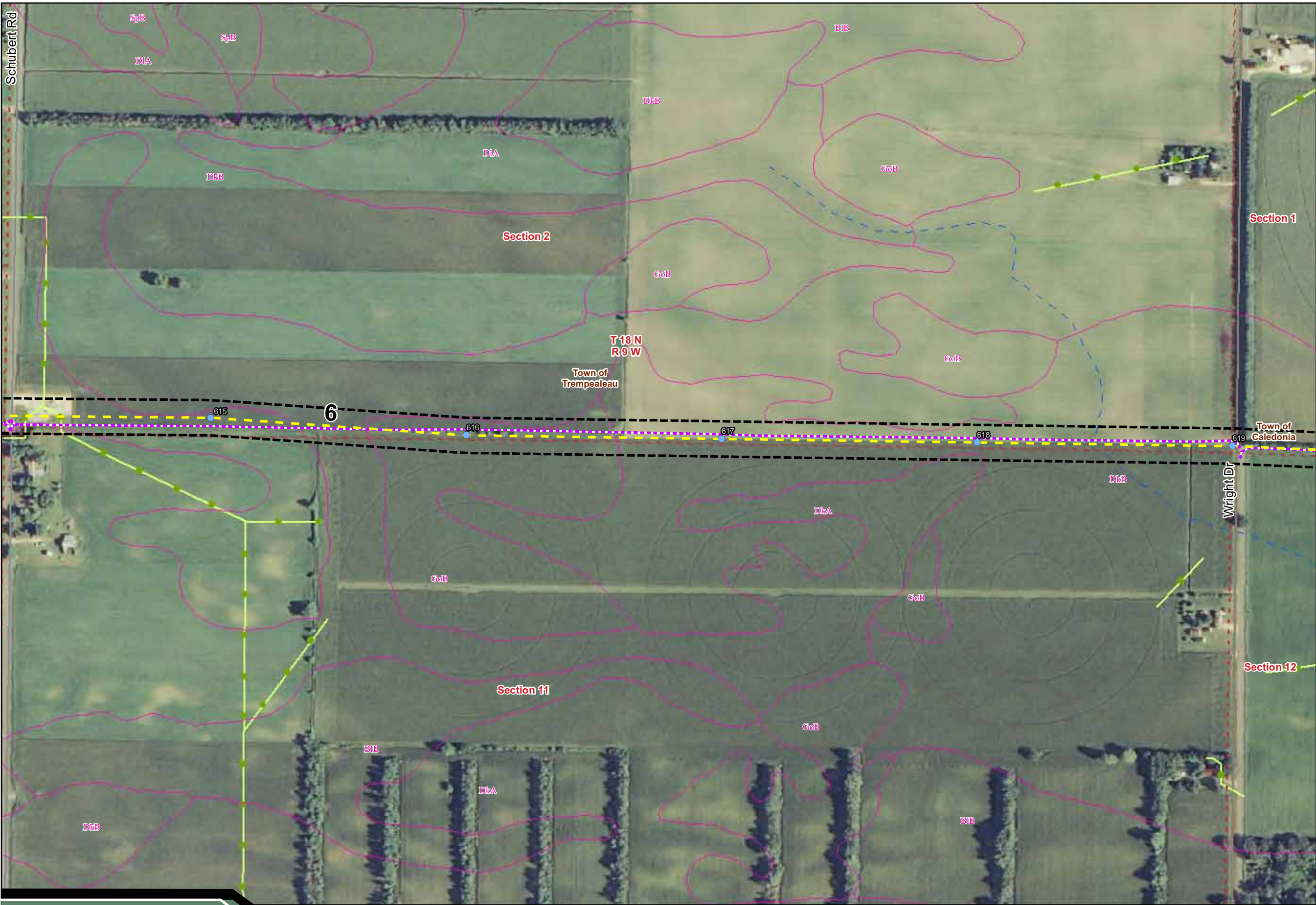
- Xcel Distribution Lines
- Riverland Distribution Lines

0 400 Feet

Sheet Map Index

Data Sources: WDNR, WisDOT, BTS, USGS, PSCW, LMIC, FEMA, WWI, FCC, Platts, Census, Stantec
CapX2020 Environmental Figure

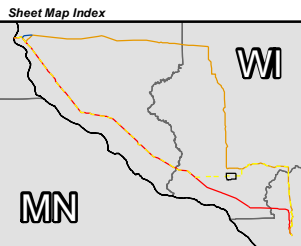
Aerial Photography Published by National Agriculture Imagery Program (NAIP), 2008



Sheet Map 109

Legend

- Proposed Transmission Line Alternatives**
- Q1-Highway 35 Route
 - Arcadia Route
 - Arcadia-Alma Option
 - Q1-Galesville Route
- Project Features**
- Transmission Line Structure
 - Segment Endpoint
 - Proposed Substation Siting Area
 - Right-of-Way
 - Access Route
- Access Route Waterway Crossings**
- Temporary Clear Span Bridge
 - Miscellaneous Structure
- Identified Natural Resources**
- Wetlands Delineated from Aerial Interp.
 - Field Sketched Wetlands
 - Field Sketched Open Water
 - Field Sketched Waterway
- Water Features (FEMA, WWI)**
- FEMA Floodplain
 - Wisconsin Wetland Inventory
- WDNR 24K Hydrography**
- Intermittent Stream
 - Perennial Stream
 - Waterbody
- NRCS Soils Survey Data**
- Hydric Soils
 - Possible Hydric Inclusions
 - Non-Hydric Soils
- Jurisdiction (WDNR)**
- State
 - County
 - Sections
 - City, Village or Town
- Distribution Lines**
- Xcel Distribution Lines
 - Riverland Distribution Lines



Data Sources: WDNR, WisDOT, BTS, USGS, PSCW, LMIC, FEMA, WWI, FCC, Platts, Census, Stantec
CapX2020 Environmental Figure

Aerial Photography Published by National Agriculture Imagery Program (NAIP), 2008

CapX2020

Hampton • Rochester • La Crosse 345kV Transmission Project

Xcel Energy • Dairyland Power Cooperative • Rochester Public Utilities • Wisconsin Public Power, Incorporated • Southern Minnesota Municipal Power Agency

Environmental Features

Revised March 2011



Sheet Map 110

Legend

Proposed Transmission Line Alternatives

- Q1-Highway 35 Route
- Arcadia Route
- Arcadia-Alma Option
- Q1-Galesville Route

Project Features

- Transmission Line Structure
- Segment Endpoint
- Proposed Substation Siting Area
- Right-of-Way
- Access Route

Access Route Waterway Crossings

- Temporary Clear Span Bridge
- Miscellaneous Structure

Identified Natural Resources

- Wetlands Delineated from Aerial Interp.
- Field Sketched Wetlands
- Field Sketched Open Water
- Field Sketched Waterway

Water Features (FEMA, WWI)

- FEMA Floodplain
- Wisconsin Wetland Inventory

WDNR 24K Hydrography

- Intermittent Stream
- Perennial Stream
- Waterbody

NRCS Soils Survey Data

- Hydric Soils
- Possible Hydric Inclusions
- Non-Hydric Soils

Jurisdiction (WDNR)

- State
- County
- Sections
- City, Village or Town

Distribution Lines

- Xcel Distribution Lines
- Riverland Distribution Lines

0 400 Feet

Sheet Map Index

Data Sources: WDNR, WisDOT, BTS, USGS, PSCW, LMIC, FEMA, WWI, FCC, Platts, Census, Stantec
CapX2020 Environmental Figure

Aerial Photography Published by National Agriculture Imagery Program (NAIP), 2008



Sheet Map 111

Legend

Proposed Transmission Line Alternatives

- Q1-Highway 35 Route
- Arcadia Route
- Arcadia-Alma Option
- Q1-Galesville Route

Project Features

- Transmission Line Structure
- Segment Endpoint
- Proposed Substation Siting Area
- Right-of-Way
- Access Route

Access Route Waterway Crossings

- Temporary Clear Span Bridge
- Miscellaneous Structure

Identified Natural Resources

- Wetlands Delineated from Aerial Interp.
- Field Sketched Wetlands
- Field Sketched Open Water
- Field Sketched Waterway

Water Features (FEMA, WWI)

- FEMA Floodplain
- Wisconsin Wetland Inventory

WDNR 24K Hydrography

- Intermittent Stream
- Perennial Stream
- Waterbody

NRCS Soils Survey Data

- Hydric Soils
- Possible Hydric Inclusions
- Non-Hydric Soils

Jurisdiction (WDNR)

- State
- County
- Sections
- City, Village or Town

Distribution Lines

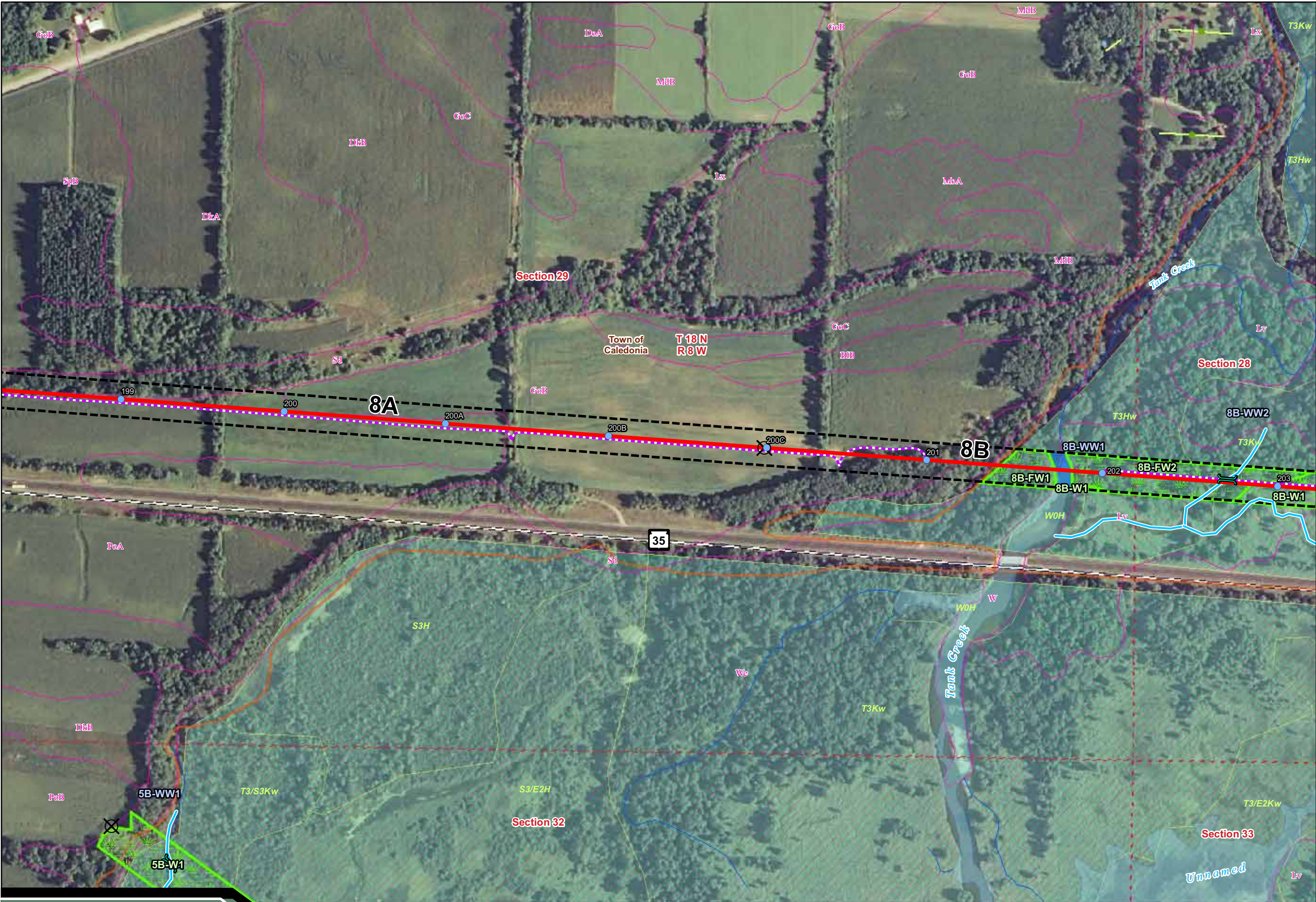
- Xcel Distribution Lines
- Riverland Distribution Lines

0 400 Feet

Sheet Map Index

Data Sources: WDNR, WisDOT, BTS, USGS, PSCW, LMIC, FEMA, WWI, FCC, Platts, Census, Stantec
CapX2020 Environmental Figure

Aerial Photography Published by National Agriculture Imagery Program (NAIP), 2008



Sheet Map 112

Legend

Proposed Transmission Line Alternatives

- Q1-Highway 35 Route
- Arcadia Route
- Arcadia-Alma Option
- Q1-Galesville Route

Project Features

- Transmission Line Structure
- Segment Endpoint
- Proposed Substation Siting Area
- Right-of-Way
- Access Route

Access Route Waterway Crossings

- Temporary Clear Span Bridge
- Miscellaneous Structure

Identified Natural Resources

- Wetlands Delineated from Aerial Interp.
- Field Sketched Wetlands
- Field Sketched Open Water
- Field Sketched Waterway

Water Features (FEMA, WWI)

- FEMA Floodplain
- Wisconsin Wetland Inventory

WDNR 24K Hydrography

- Intermittent Stream
- Perennial Stream
- Waterbody

NRCS Soils Survey Data

- Hydric Soils
- Possible Hydric Inclusions
- Non-Hydric Soils

Jurisdiction (WDNR)

- State
- County
- Sections
- City, Village or Town

Distribution Lines

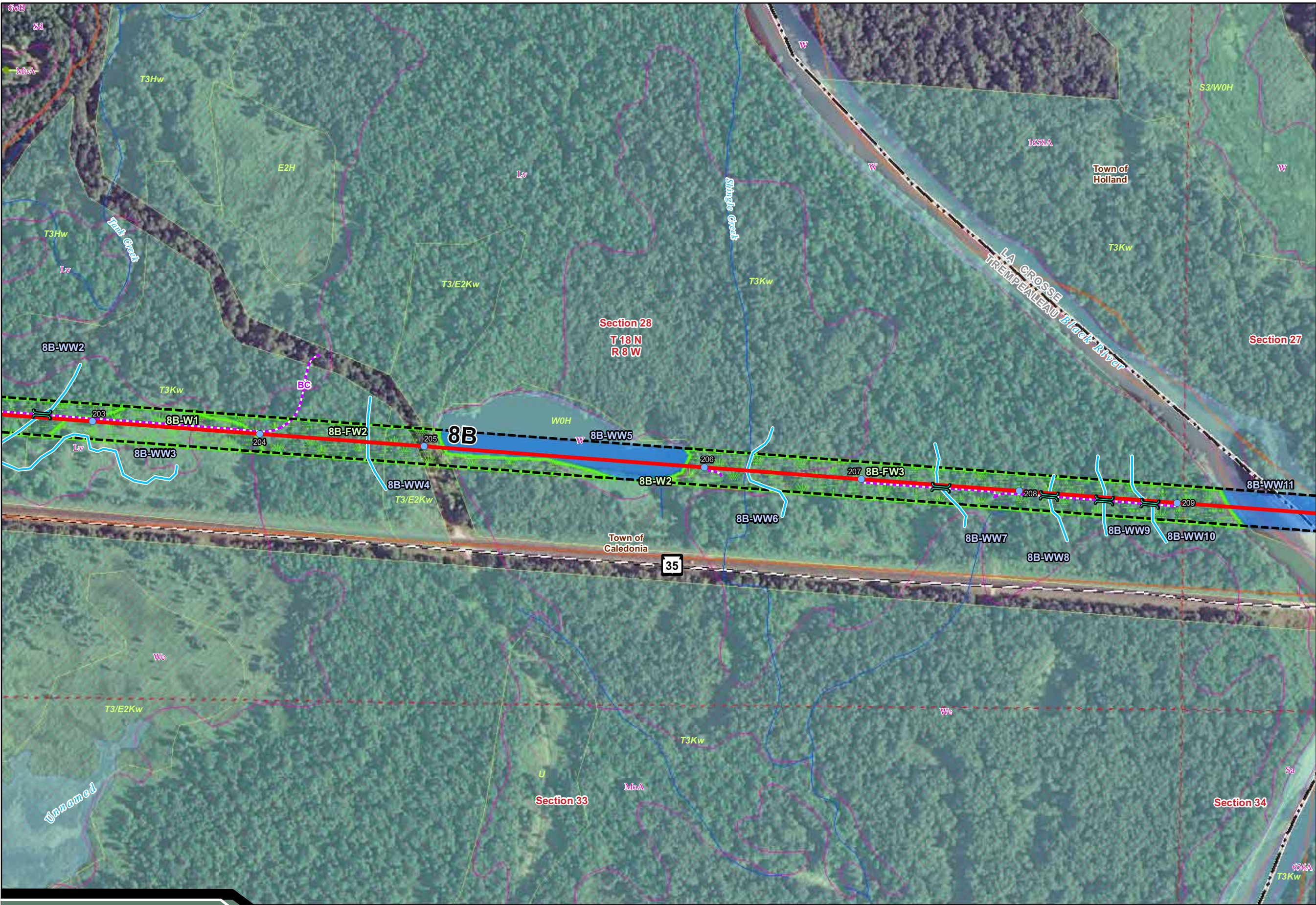
- Xcel Distribution Lines
- Riverland Distribution Lines

0 400 Feet

Sheet Map Index

Data Sources: WDNR, WisDOT, BTS, USGS, PSCW, LMIC, FEMA, WWI, FCC, Platts, Census, Stantec
CapX2020 Environmental Figure

Aerial Photography Published by National Agriculture Imagery Program (NAIP), 2008



Sheet Map 113

Legend

Proposed Transmission Line Alternatives

- Q1-Highway 35 Route
- Arcadia Route
- Arcadia-Alma Option
- Q1-Galesville Route

Project Features

- Transmission Line Structure
- Segment Endpoint
- Proposed Substation Siting Area
- Right-of-Way
- Access Route

Access Route Waterway Crossings

- Temporary Clear Span Bridge
- Miscellaneous Structure

Identified Natural Resources

- Wetlands Delineated from Aerial Interp.
- Field Sketched Wetlands
- Field Sketched Open Water
- Field Sketched Waterway

Water Features (FEMA, WWI)

- FEMA Floodplain
- Wisconsin Wetland Inventory

WDNR 24K Hydrography

- Intermittent Stream
- Perennial Stream
- Waterbody

NRCS Soils Survey Data

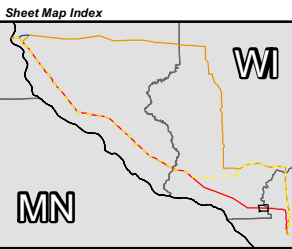
- Hydric Soils
- Possible Hydric Inclusions
- Non-Hydric Soils

Jurisdiction (WDNR)

- State
- County
- Sections
- City, Village or Town

Distribution Lines

- Xcel Distribution Lines
- Riverland Distribution Lines



Data Sources: WDNR, WisDOT, BTS, USGS, PSCW, LMIC, FEMA, WWI, FCC, Platts, Census, Stantec
CapX2020 Environmental Figure

Aerial Photography Published by National Agriculture Imagery Program (NAIP), 2008

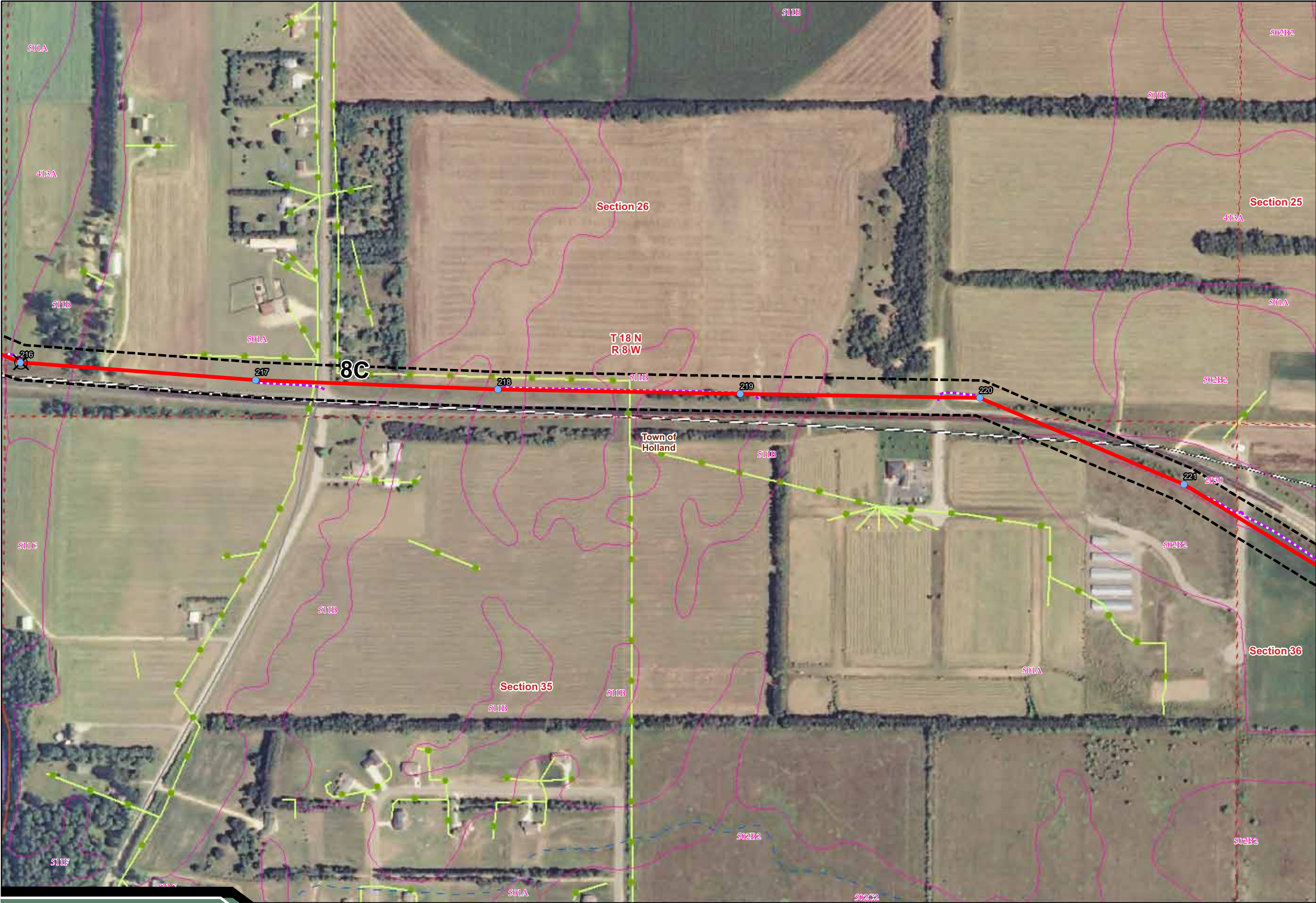
CapX2020

Hampton • Rochester • La Crosse 345kV Transmission Project

Xcel Energy • Dairyland Power Cooperative • Rochester Public Utilities • Wisconsin Public Power, Incorporated • Southern Minnesota Municipal Power Agency

Environmental Features

Revised March 2011



Sheet Map 115

Legend

Proposed Transmission Line Alternatives

- Q1-Highway 35 Route
- Arcadia Route
- Arcadia-Alma Option
- Q1-Galesville Route

Project Features

- Transmission Line Structure
- Segment Endpoint

Proposed Substation Siting Area

- Right-of-Way
- Access Route

Access Route Waterway Crossings

- Temporary Clear Span Bridge
- Miscellaneous Structure

Identified Natural Resources

- Wetlands Delineated from Aerial Interp.
- Field Sketched Wetlands
- Field Sketched Open Water
- Field Sketched Waterway

Water Features (FEMA, WWI)

- FEMA Floodplain
- Wisconsin Wetland Inventory

WDNR 24K Hydrography

- Intermittent Stream
- Perennial Stream
- Waterbody

NRCS Soils Survey Data

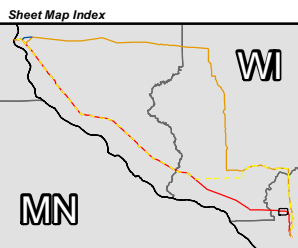
- Hydric Soils
- Possible Hydric Inclusions
- Non-Hydric Soils

Jurisdiction (WDNR)

- State
- County
- Sections
- City, Village or Town

Distribution Lines

- Xcel Distribution Lines
- Riverland Distribution Lines



Data Sources: WDNR, WisDOT, BTS, USGS, PSCW, LMIC, FEMA, WWI, FCC, Platts, Census, Stantec
CapX2020 Environmental Figure

Aerial Photography Published by National Agriculture Imagery Program (NAIP), 2008

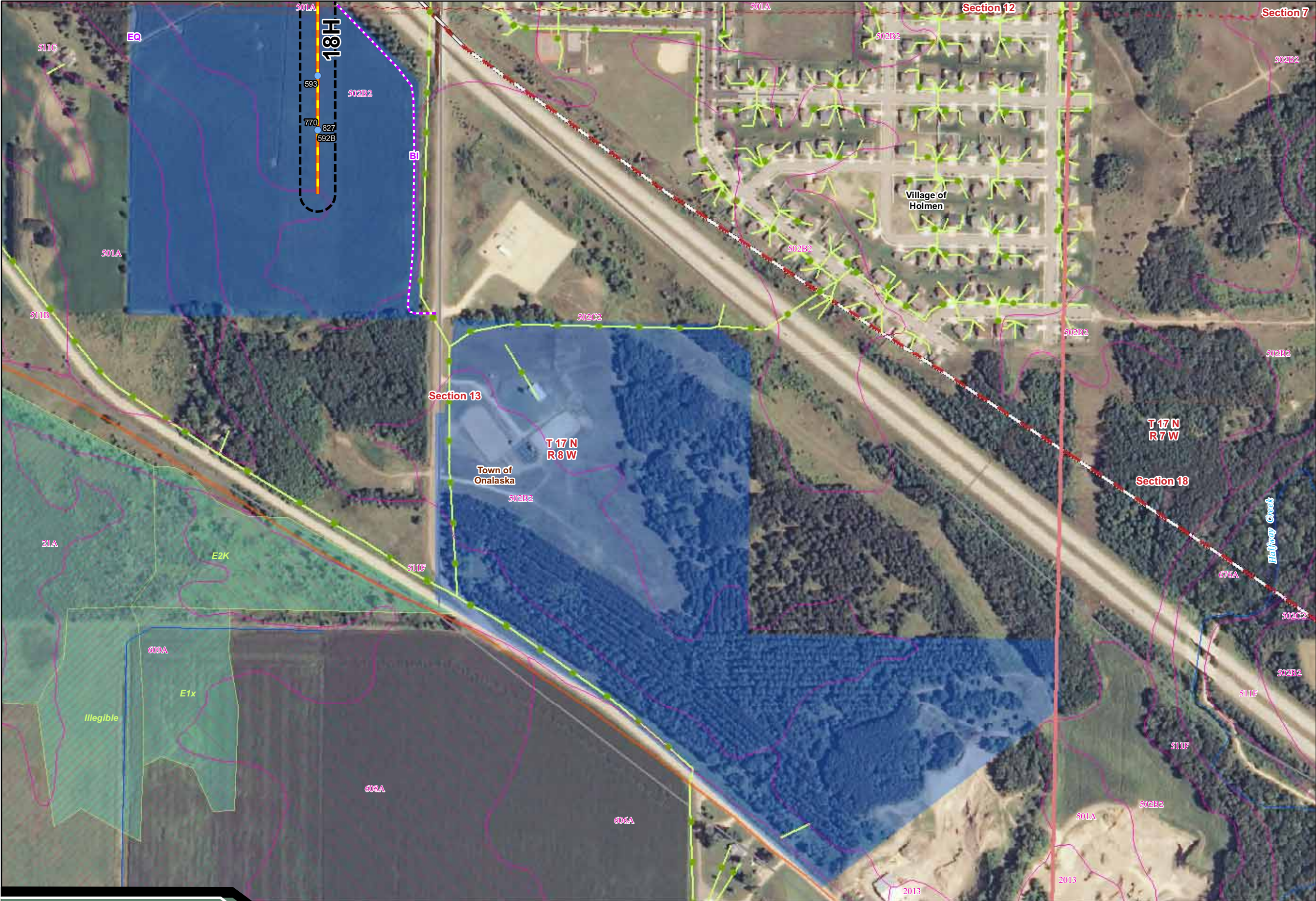
CapX2020

Hampton • Rochester • La Crosse 345kV Transmission Project

Xcel Energy • Dairyland Power Cooperative • Rochester Public Utilities • Wisconsin Public Power, Incorporated • Southern Minnesota Municipal Power Agency

Environmental Features

Revised March 2011



Sheet Map 116

Legend

Proposed Transmission Line Alternatives

- Q1-Highway 35 Route
- Arcadia Route
- Arcadia-Alma Option
- Q1-Galesville Route

Project Features

- Transmission Line Structure
- Segment Endpoint
- Proposed Substation Siting Area
- Right-of-Way
- Access Route

Access Route Waterway Crossings

- Temporary Clear Span Bridge
- Miscellaneous Structure

Identified Natural Resources

- Wetlands Delineated from Aerial Interp.
- Field Sketched Wetlands
- Field Sketched Open Water
- Field Sketched Waterway

Water Features (FEMA, WWI)

- FEMA Floodplain
- Wisconsin Wetland Inventory

WDNR 24K Hydrography

- Intermittent Stream
- Perennial Stream
- Waterbody

NRCS Soils Survey Data

- Hydric Soils
- Possible Hydric Inclusions
- Non-Hydric Soils

Jurisdiction (WDNR)

- State
- County
- Sections
- City, Village or Town

Distribution Lines

- Xcel Distribution Lines
- Riverland Distribution Lines

0 400 Feet

Sheet Map Index

Data Sources: WDNR, WisDOT, BTS, USGS, PSCW, LMIC, FEMA, WWI, FCC, Platts, Census, Stantec
CapX2020 Environmental Figure

Aerial Photography Published by National Agriculture Imagery Program (NAIP), 2008