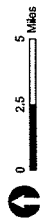


Legend

- Anticipated Alignment
 - 345 kV Anticipated Alignment
 - - - 161 kV Anticipated Alignment
- Existing Utility
 - 69 kV Transmission Line
 - 115 kV Transmission Line
 - 161 kV Transmission Line
 - 345 kV Transmission Line
- Jurisdiction
 - City/Township

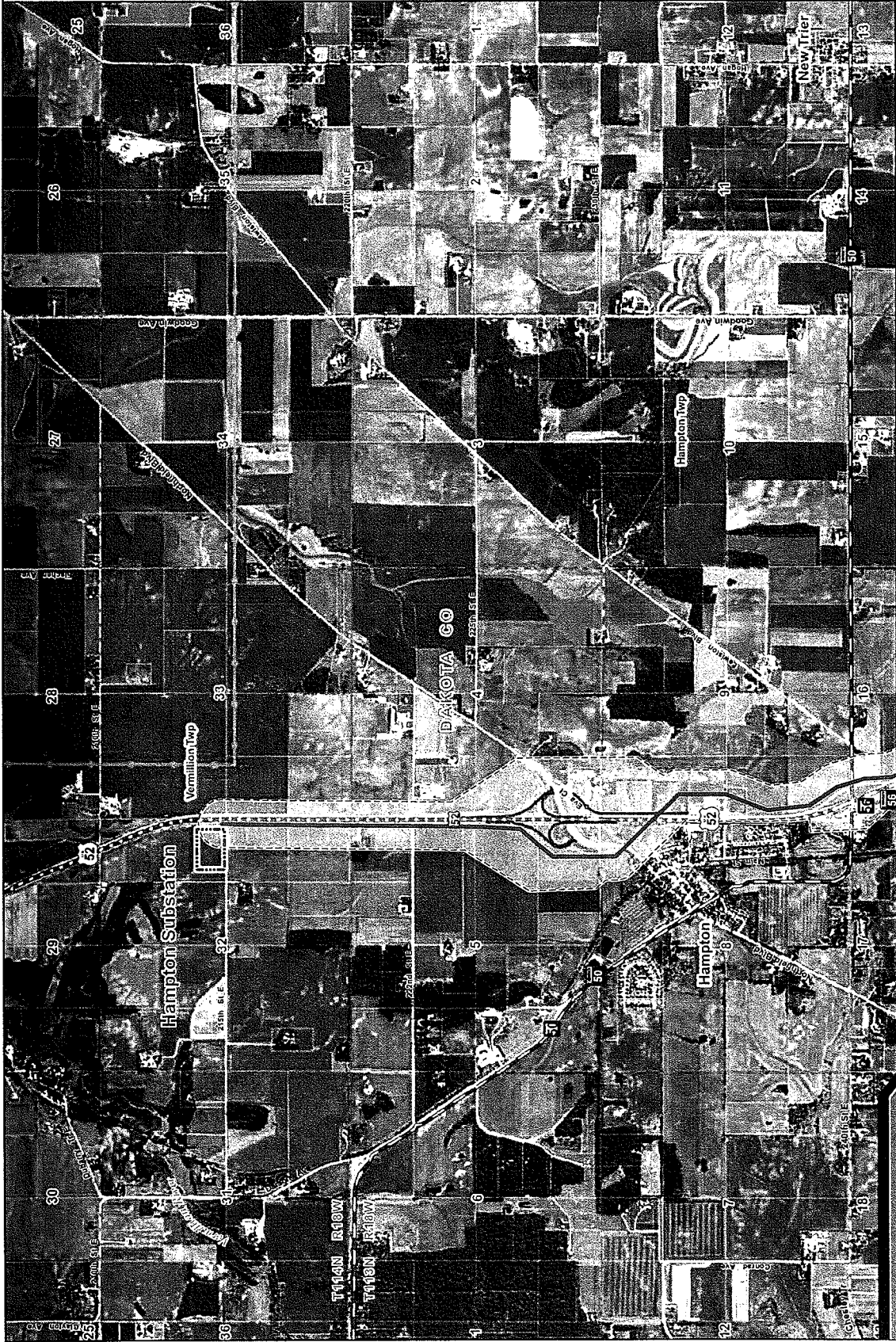


Map made by GIS
 DATA SOURCES: STATE OF IOWA, AND DNR, AND BRS
 P.C. SYSTEMS, INC. 2001 2503 1st Ave
 Ames, IA 50010
 Project No. 09-1448
 Revised: 09/09

Sheet Map Key

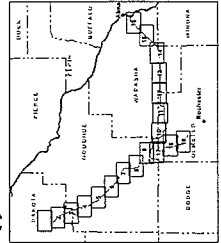
Hampton • Rochester • La Crosse 345 kV Transmission Project

PUC Docket #
 E002/TL-09-1448



Legend

- Anticipated Alignment**
 - 345 kV Anticipated Alignment
 - 161 kV Anticipated Alignment
- Existing Utility**
 - 89 kV Transmission Line
 - 115 kV Transmission Line
 - 161 kV Transmission Line
 - 345 kV Transmission Line
- Transportation**
 - Interstate Highway
 - US Highway
 - State Highway
- Jurisdiction**
 - City/Township
 - MN DNR Wildlife Management Area
 - USFWS National Wildlife Refuge
 - Minnesota State Trail
- Parcel



DATE: April 17, 2013
 DRAWN BY: J. WILSON, R.E., P.E.
 CHECKED BY: J. WILSON, R.E., P.E.
 PROJECT: 345 kV TRANSMISSION PROJECT
 LOCATION: HAMPTON, MN
 SCALE: AS SHOWN

**PUC Docket #
 E002/TL-09-1448**

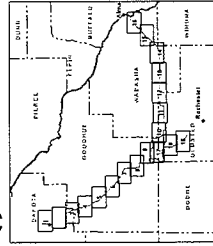
Hampton - Rochester - La Crosse 345 kV Transmission Project

Sheet Map 1 of 19



Legend

- Anticipated Alignment**
 - 345 kV Anticipated Alignment
 - 161 kV Anticipated Alignment
- Route**
 - Existing Utility
- Transportation**
 - 69 kV Transmission Line
 - 115 kV Transmission Line
 - 161 kV Transmission Line
 - 345 kV Transmission Line
 - Interstate Highway
 - US Highway
 - State Highway
- Jurisdiction**
 - City/Township
 - MN DNR Wildlife Management Area
 - USFWS National Wildlife Refuge
 - Minnesota State Trail
 - Parcel



MAP DATE April, 2017
 DATA SOURCES: LA GIS, VALUE GIS, USGS
 PROJECT NUMBER: E002/TL-09-1448
 PROJECT TITLE: La Crosse 345 kV Transmission Project
 MAP SCALE: 1" = 100 Feet
 MAP DATE: 04/17/2017

**PUC Docket #
 E002/TL-09-1448**

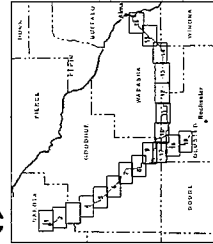
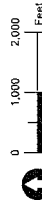
Hampton • Rochester • La Crosse 345 kV Transmission Project

Sheet Map 2 of 19



Legend

- Anticipated Alignment**
 - 345 kV Anticipated Alignment
 - 161 kV Anticipated Alignment
- Route**
 - - - Existing Utility
- Transmission Line**
 - 69 kV Transmission Line
 - 115 kV Transmission Line
 - 161 kV Transmission Line
 - 345 kV Transmission Line
- Transportation**
 - Interstate Highway
 - US Highway
 - State Highway
- Jurisdiction**
 - City/Township
 - MN DNR Wildlife Management Area
 - USFWS National Wildlife Refuge
 - Minnesota State Trail
- Parcel**

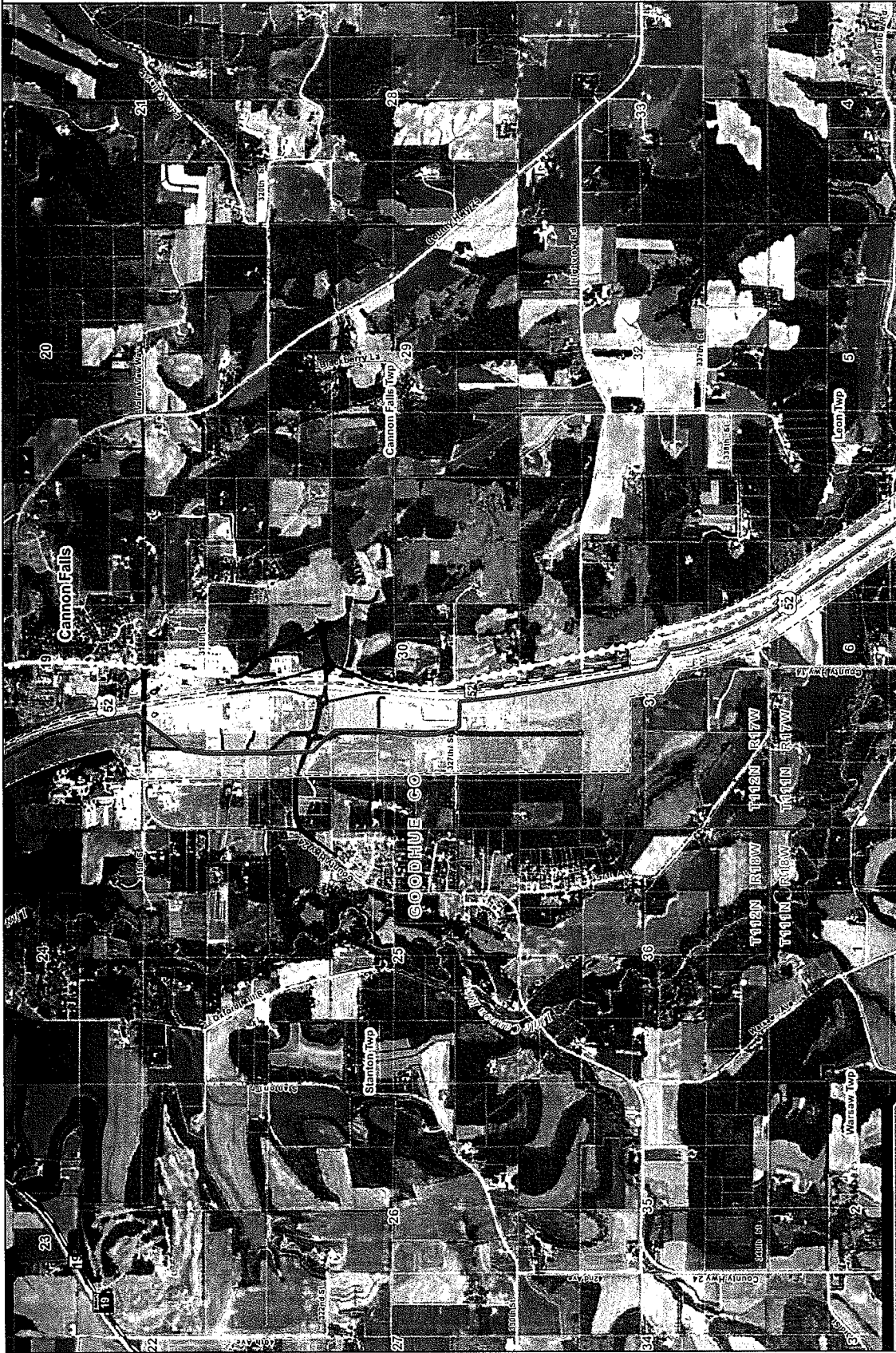


MAP DATE: 04/15/2011
 DATA SOURCES: ESRI, AIR PHOTO, GIS, USGS
 PUC DOCKET # E002/TL-09-1448
 PROJECT LOCATION: CANNON FALLS, MINNESOTA
 STATE MAP ID: 010/MapInfo/MapInfo

**PUC Docket #
 E002/TL-09-1448**

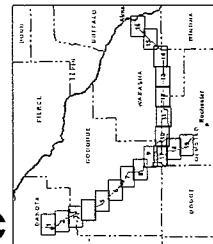
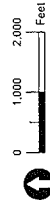
Hampton • Rochester • La Crosse 345 kV Transmission Project

Sheet Map 3 of 19



Legend

- Anticipated Alignment**
 - 345 kV Anticipated Alignment
 - 161 kV Anticipated Alignment
- Existing Utility**
 - Route
 - 69 kV Transmission Line
 - 115 kV Transmission Line
 - 161 kV Transmission Line
 - 345 kV Transmission Line
- Transportation**
 - Interstate Highway
 - US Highway
 - State Highway
- Jurisdiction**
 - City/Township
 - MN DNR Wildlife Management Area
 - USFWS National Wildlife Refuge
 - Minnesota State Trail
- Parcel**

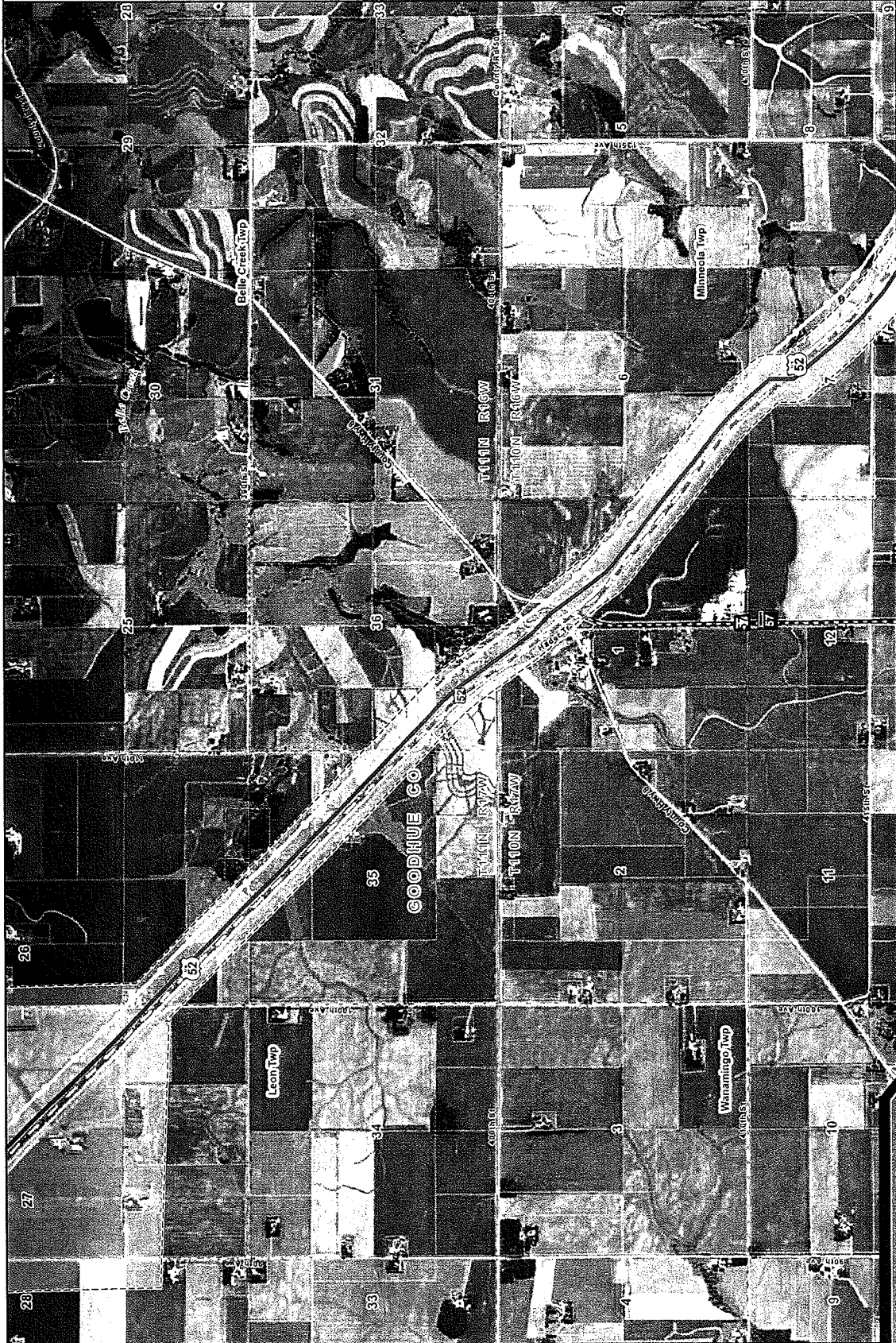


Map Date April 17, 2012
 Draft Scale: 1" = 100 Feet
 PUC Docket # E002FTL-09-1448
 USGS NAD 83 State Plane Minnesota North Central Zone
 USGS NAD 83 State Plane Minnesota North Central Zone

**PUC Docket #
 E002FTL-09-1448**

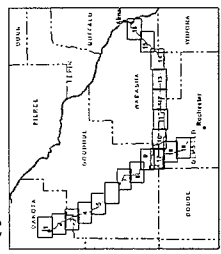
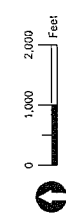
Hampden • Rochester • La Crosse 345 kV Transmission Project

Sheet Map 4 of 19



Legend

- Anticipated Alignment**
 - 345 kV Anticipated Alignment
 - 161 kV Anticipated Alignment
- Existing Utility**
 - 69 kV Transmission Line
 - 115 kV Transmission Line
 - 345 kV Transmission Line
- Transportation**
 - Interstate Highway
 - US Highway
 - State Highway
- Jurisdiction**
 - City/Township
 - MN DNR Wildlife Management Area
 - USFWS National Wildlife Refuge
 - Minnesota State Trail
- Parcel**

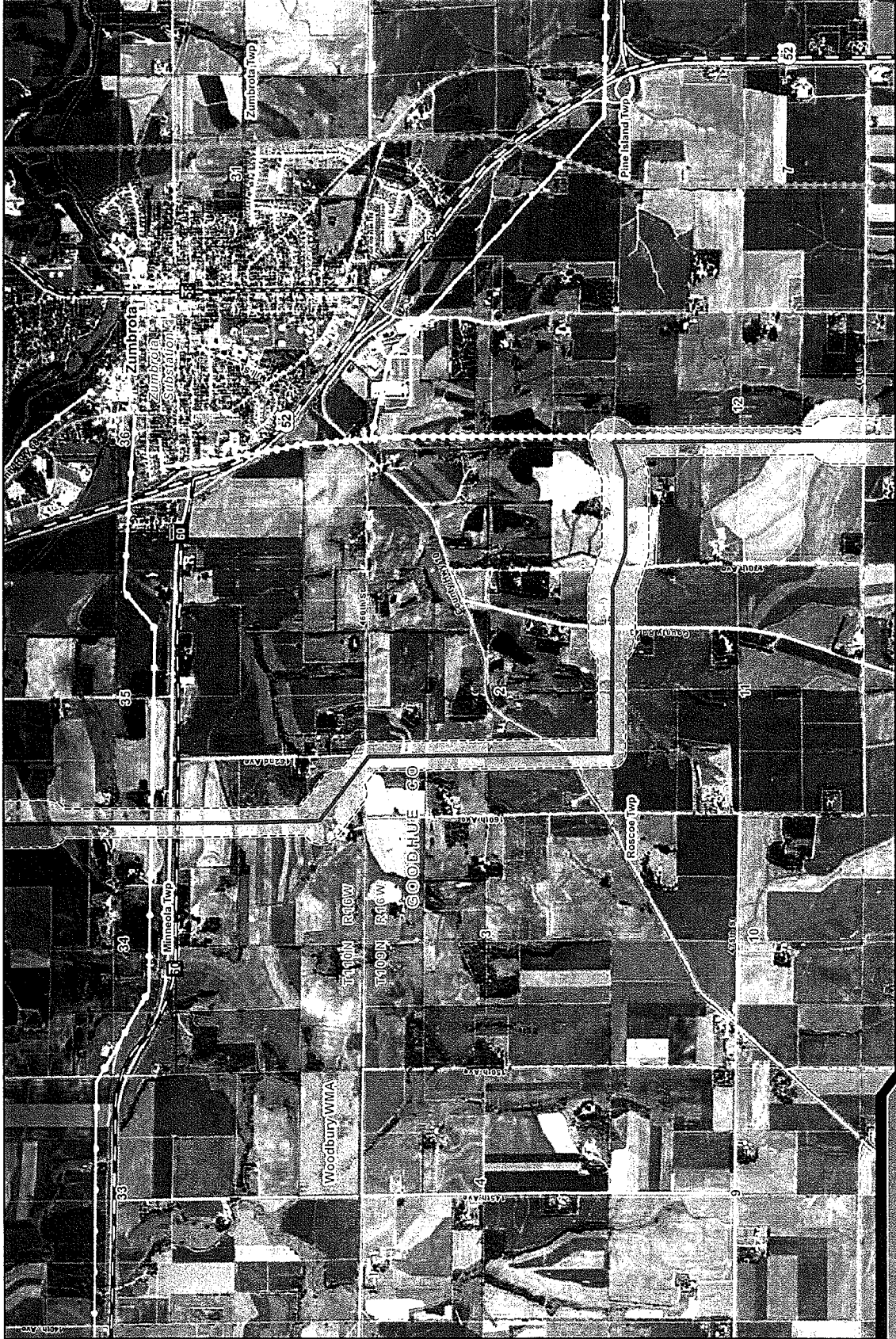


MAPSHEET DATE: 2010
 DATA SOURCES: AIRSAR, MNR, BRS, USGS
 PROJECT NUMBER: E002JTL-09-1448
 PROJECT TITLE: La Crosse 345 kV Transmission Project
 DRAWN BY: [Name]
 CHECKED BY: [Name]

**PUC Docket #
 E002JTL-09-1448**

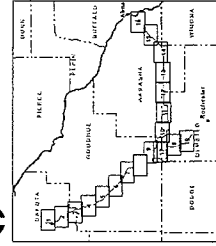
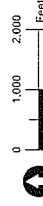
Hampton • Rochester • La Crosse 345 kV Transmission Project

Sheet Map 6 of 19



Legend

- Anticipated Alignment
 - 345 kV Anticipated Alignment
 - 161 kV Anticipated Alignment
- Existing Utility
 - 69 kV Transmission Line
 - 116 kV Transmission Line
 - 345 kV Transmission Line
- Transportation
 - Interstate Highway
 - US Highway
 - State Highway
- Jurisdiction
 - City/Township
 - MN DNR Wildlife Management Area
 - USFWS National Wildlife Refuge
 - Minnesota State Trail
- Parcel

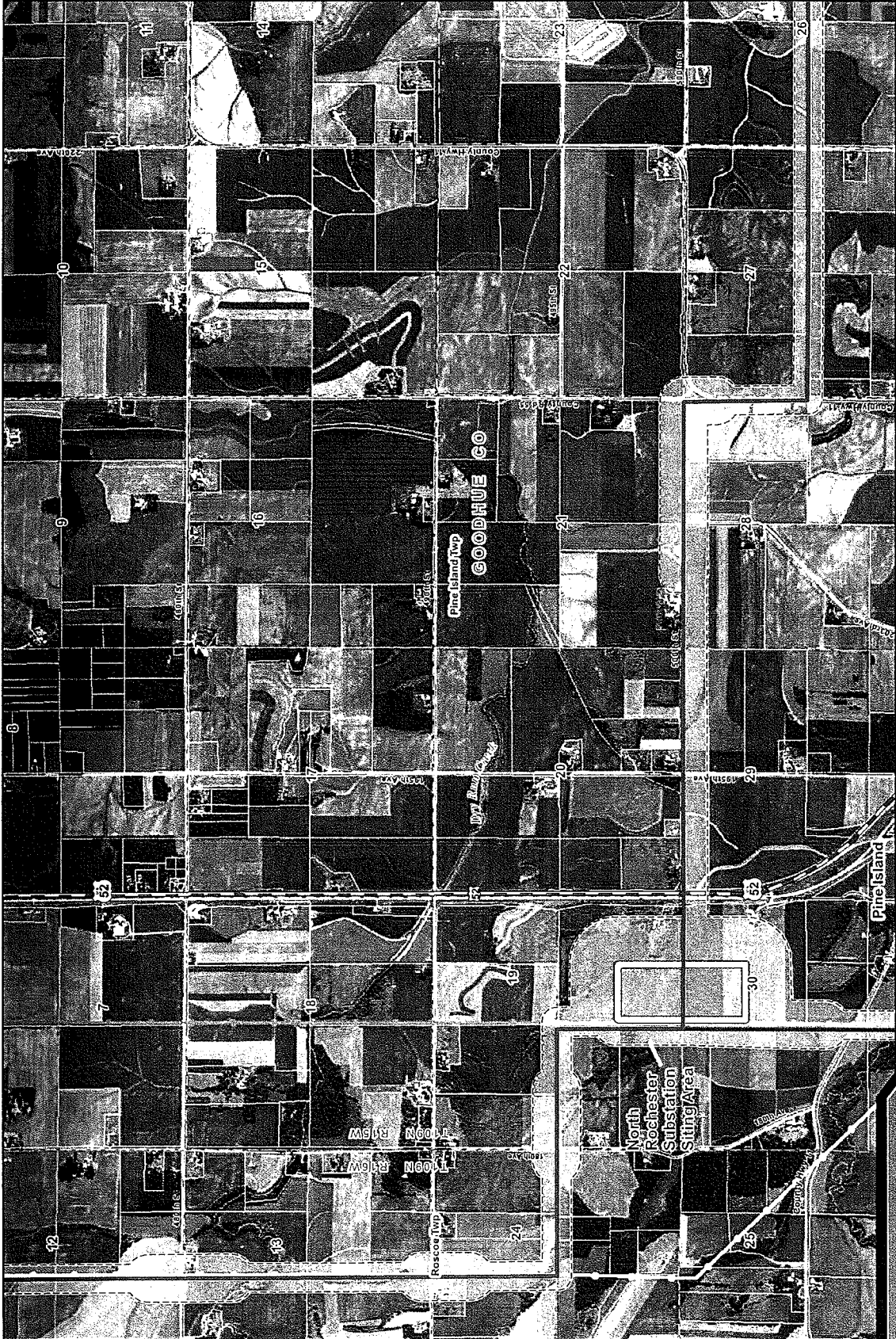


MAP DATE: 04/11/2011
 DATA SOURCES: AERIAL PHOTO, GIS, USGS
 PROJECT: TRANSMISSION LINE PROJECT
 USER: J. HANSEN
 LOCAL MAP: TRANSMISSION

**PUC Docket #
 E002/TL-09-1448**

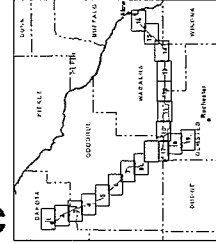
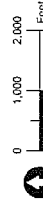
Hampton · Rochester · La Crosse 345 kV Transmission Project

Sheet Map 8 of 19



Legend

- Anticipated Alignment**
 - 345 kV Anticipated Alignment
 - 161 kV Anticipated Alignment
- Existing Utility**
 - 69 kV Transmission Line
 - 115 kV Transmission Line
 - 161 kV Transmission Line
 - 345 kV Transmission Line
- Transportation**
 - Interstate Highway
 - US Highway
 - State Highway
- Jurisdiction**
 - City/Township
 - MN DNR Wildlife Management Area
 - USFWS National Wildlife Refuge
 - Minnesota State Trail
- Parcel



MAP DATE: 04/11/2017
 DATA SOURCES: METRO TO DNR'S EIS USGS
 PUC Docket # E002/TL-09-1448
 PUC Docket # E002/TL-09-1448
 PUC Docket # E002/TL-09-1448
 PUC Docket # E002/TL-09-1448
 PUC Docket # E002/TL-09-1448

**PUC Docket #
 E002/TL-09-1448**

Hampton • Rochester • La Crosse 345 kV Transmission Project

Sheet Map 9 of 19