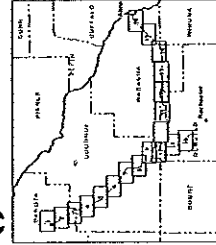
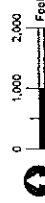


Legend

- Anticipated Alignment
- 345 kV Anticipated Alignment
- 161 kV Anticipated Alignment
- Route
- Existing Utility
- 69 kV Transmission Line
- 115 kV Transmission Line
- 161 kV Transmission Line
- 345 kV Transmission Line
- Transportation
- Interstate Highway
- US Highway
- State Highway
- Jurisdiction
- City/Township
- MN DNR Wildlife Management Area
- USEFWS National Wildlife Refuge
- Minnesota State Trail
- Parcel

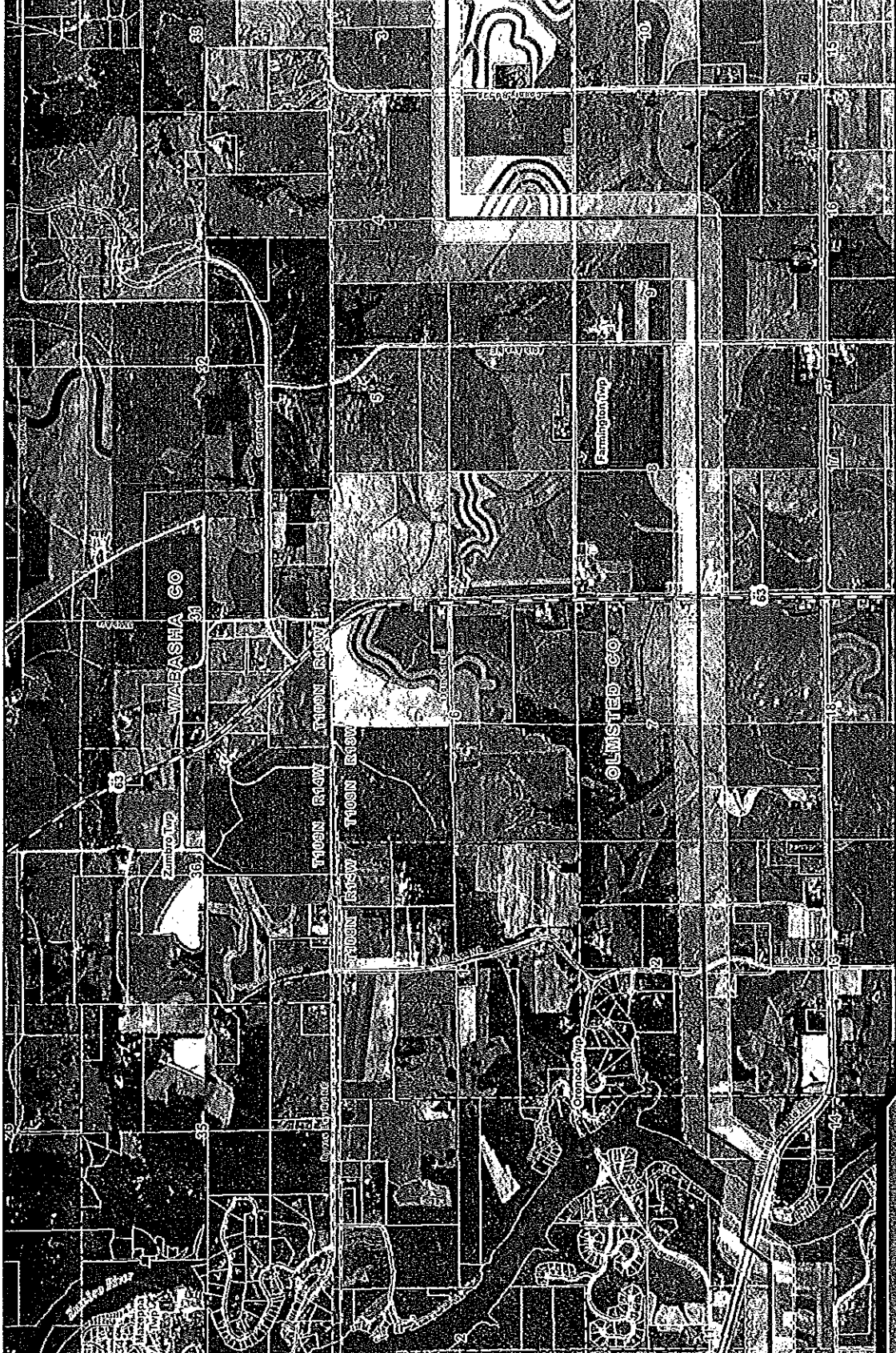


MAP DATE: APR 12 2012
 DATA SOURCE: AERIAL PHOTO, 15x WGS84
 PROJECT NUMBER: 0002/TL-09-1448
 USER: [unreadable]

**PUC Docket #
E002/TL-09-1448**

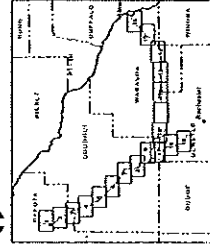
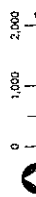
Hampton Rochester La Crosse 345 kV Transmission Project

Sheet Map 10 of 19



Legend

- Anticipated Alignment
- 345 KV Anticipated Alignment
- 161 KV Anticipated Alignment
- Route
- Existing Utility
- 69 KV Transmission Line
- 115 KV Transmission Line
- 161 KV Transmission Line
- 345 KV Transmission Line
- Transportation
- Interstate Highway
- US Highway
- State Highway
- Jurisdiction
- City/Township
- MN DNR Wildlife Management Area
- USFWS National Wildlife Refuge
- Minnesota State Trail
- Parcel

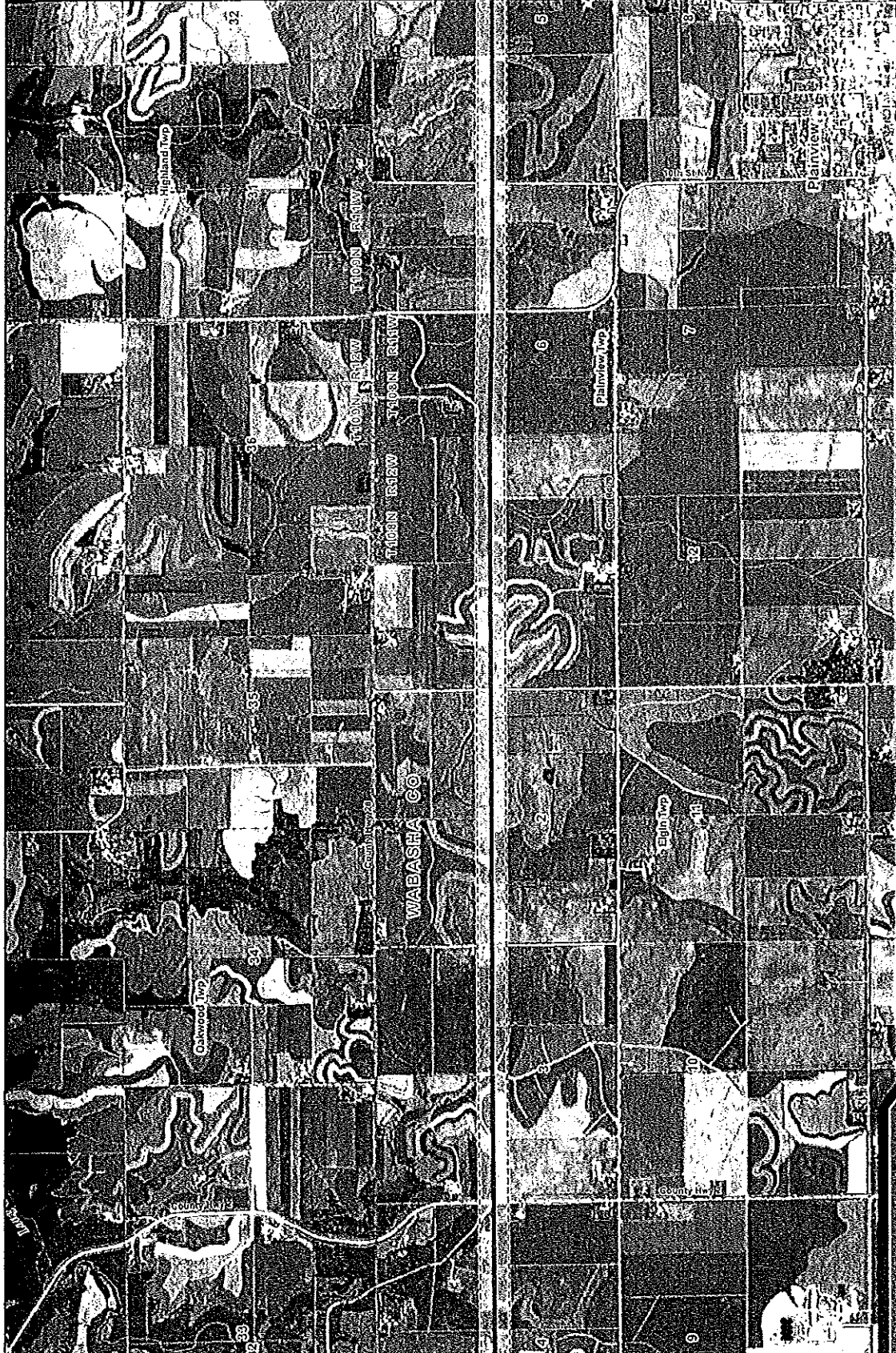


MAP DATE: 11/11/11
 DATA SOURCE: 2010 Aerial, 1:25,000
 PUC Docket # E002/TL-09-1448
 Project Name: La Crosse 345 KV Transmission Project
 Grid: NAD 83 UTM Zone 16N
 Contour Interval: 20 Feet
 Contour Elevation: 100 Feet
 Contour Label: 100

PUC Docket #
 E002/TL-09-1448

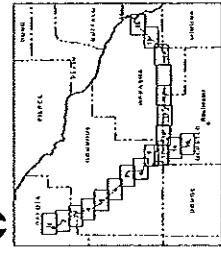
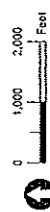
Hampton - Rochester - La Crosse 345 KV Transmission Project

Sheet Map 11 of 19



Legend

- Anticipated Alignment
- 345 KV Anticipated Alignment
- 161 KV Anticipated Alignment
- Route
- Existing Utility
- 69 KV Transmission Line
- 115 KV Transmission Line
- 161 KV Transmission Line
- 345 KV Transmission Line
- Transportation
- Interstate Highway
- US Highway
- State Highway
- Jurisdiction
- City/Township
- W/DNR Wildlife Management Area
- USFWS National Wildlife Refuge
- Minnesota State Trail
- Parcel

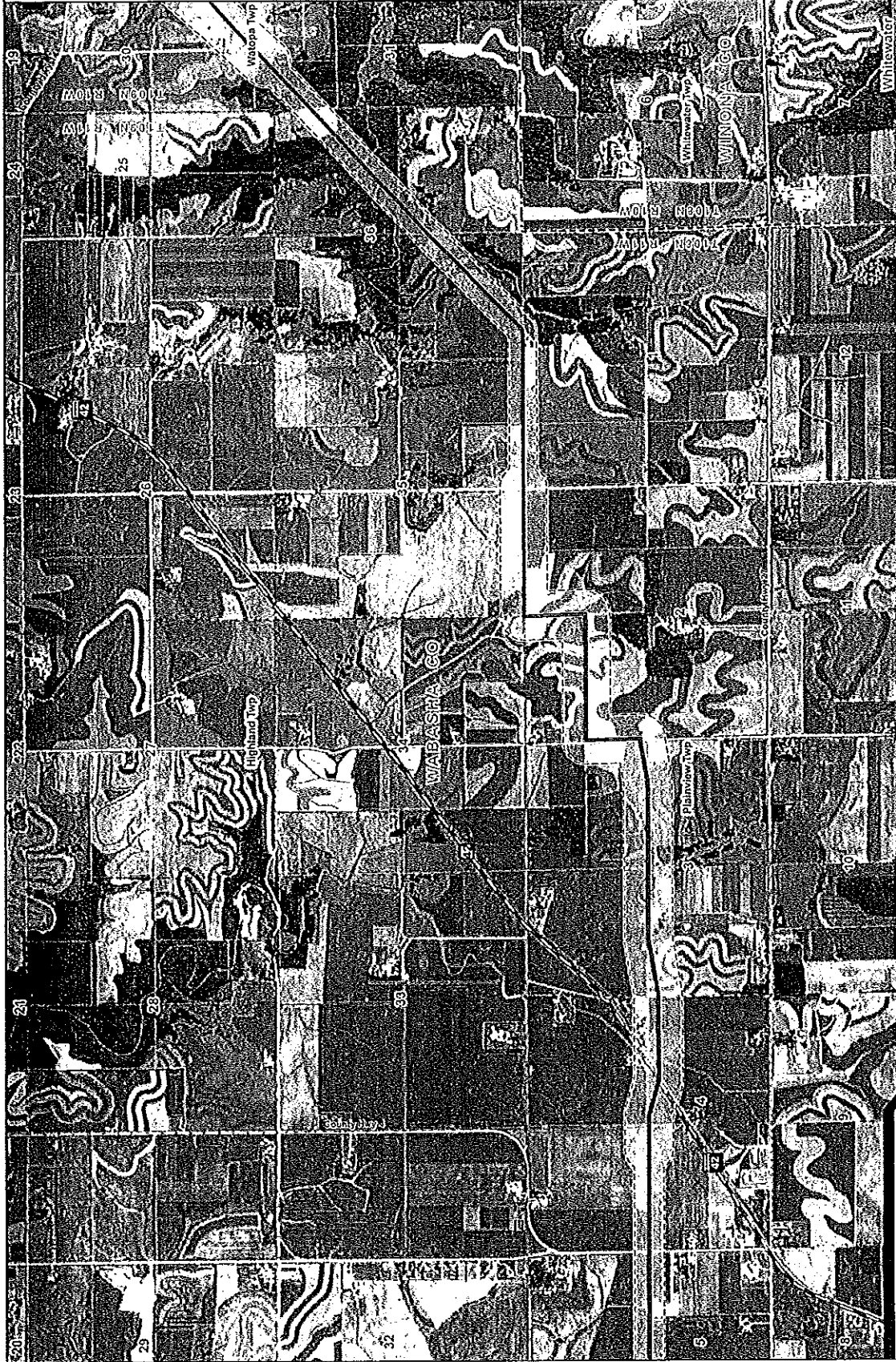


DATE: April 1, 2011
 PLAN NUMBER: 09-1448
 PROJECT: 345 KV Transmission Line
 COUNTY: WABASIA COUNTY, MINNESOTA
 SHEET: 13 OF 19

PUC Docket #
E002/TL-09-1448

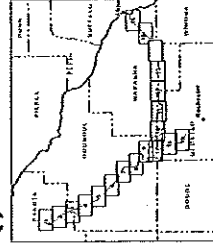
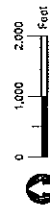
Hampton - Rochester - La Crosse 345 KV Transmission Project

Sheet Map 13 of 19



Legend

- Anticipated Alignment
- 345 kV Anticipated Alignment
- 161 kV Anticipated Alignment
- Route
- Existing Utility
- 69 kV Transmission Line
- 115 kV Transmission Line
- 161 kV Transmission Line
- 345 kV Transmission Line
- Transportation
- Interstate Highway
- US Highway
- State Highway
- Jurisdiction
- City/Township
- MN DNR Wildlife Management Area
- USEWS National Wildlife Refuge
- Minnesota State Trail
- Parcel

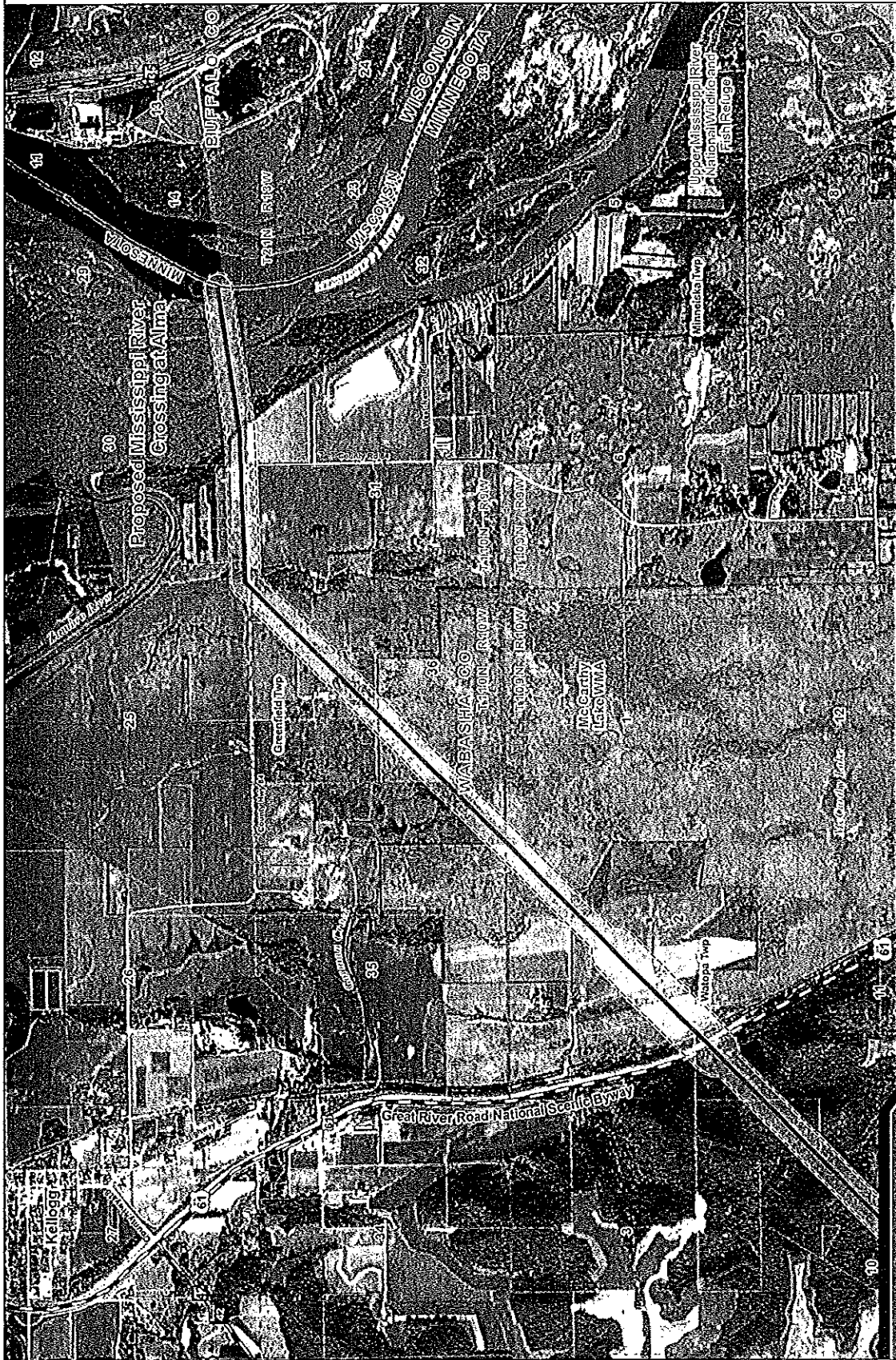


DATE: April 12, 2017
 DRAWN BY: [Name]
 CHECKED BY: [Name]
 PROJECT: [Name]
 SHEET: [Name]

**PUC Docket #
 E002/TL-09-1448**

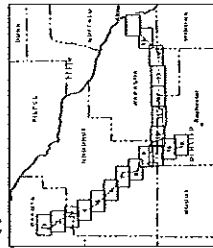
Hampton Rochester La Crosse 345 kV Transmission Project

Sheet Map 14 of 19



Legend

- Anticipated Alignment
- 345 kV Anticipated Alignment
- 181 kV Anticipated Alignment
- Route
- Existing Utility
- 69 kV Transmission Line
- 115 kV Transmission Line
- 181 kV Transmission Line
- 345 kV Transmission Line
- Transportation
- Interstate Highway
- US Highway
- State Highway
- Jurisdiction
- City/Township
- MN DNR Wildlife Management Area
- USFWS National Wildlife Refuge
- Minnesota State Trail
- Parcel

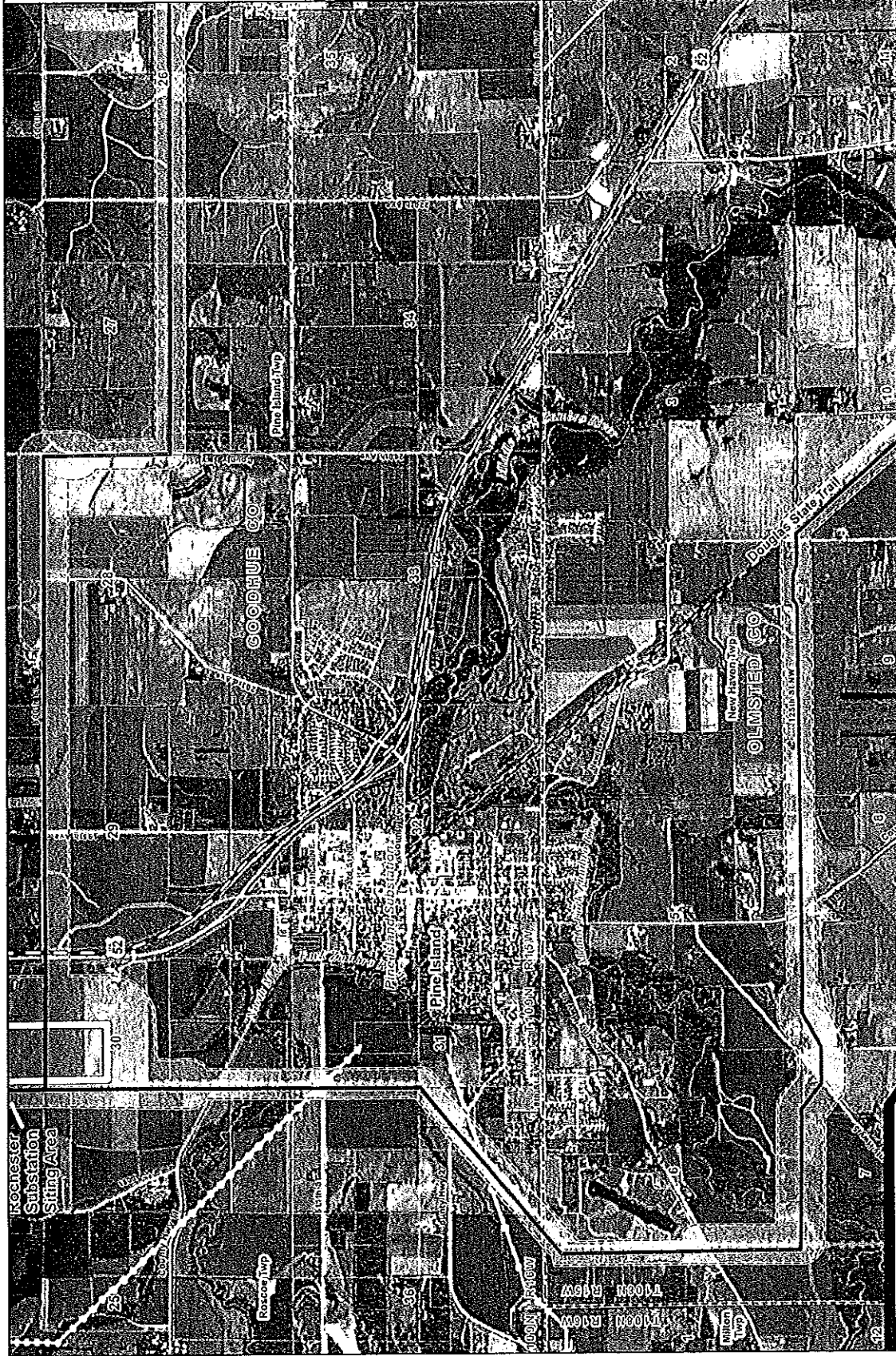


MAP DATE: April 17, 2012
 PUC Docket # E0027LE-09-1448
 PROJECT: 345 kV Transmission Project
 PROJECT LOCATION: Upper Mississippi River National Wildlife and Fish Refuge
 PROJECT AREA: 100,000 sq. ft. (approx.)
 PROJECT AREA: 100,000 sq. ft. (approx.)

**PUC Docket #
 E0027LE-09-1448**

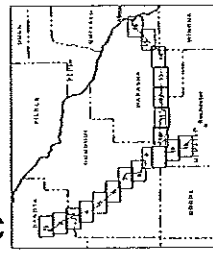
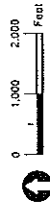
Hampton • Rochester • La Crosse 345 kV Transmission Project

Sheet Map 16 of 19



Legend

- Anticipated Alignment
 - 345 kV Anticipated Alignment
 - 161 kV Anticipated Alignment
- Existing Utility
 - Route
 - 69 kV Transmission Line
 - 115 kV Transmission Line
 - 161 kV Transmission Line
 - 345 kV Transmission Line
- Transportation
 - Interstate Highway
 - US Highway
 - State Highway
- Jurisdiction
 - City/Township
 - MN DNR Wildlife Management Area
 - USFWS National Wildlife Refuge
 - Minnesota State Trail
 - Parcel

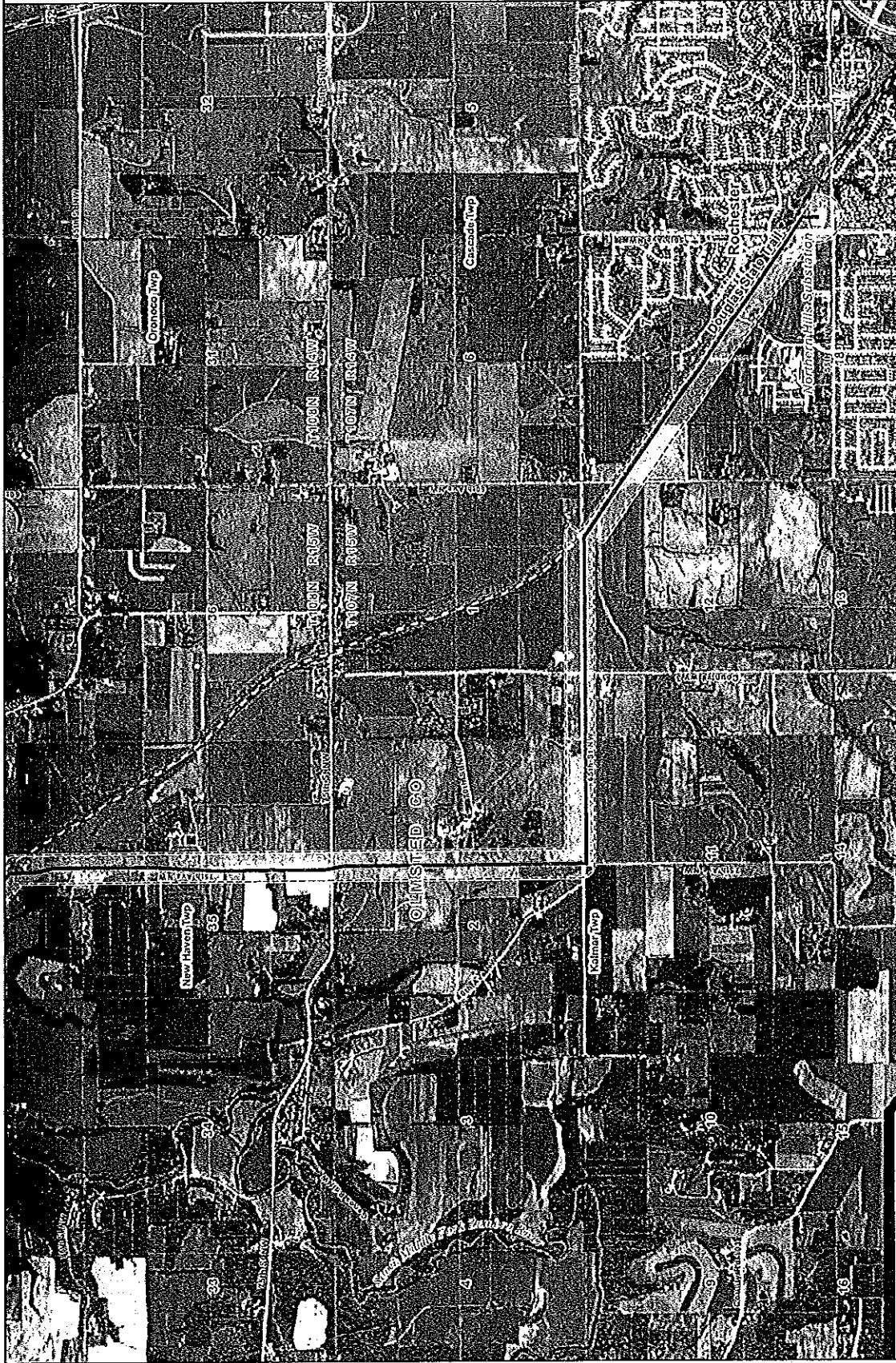


Map Date: April 17, 2012
 Map Scale: 1" = 1000 Feet
 PUC Docket # E002/TL-09-1448
 Project Name: La Crosse 345 kV Transmission Project
 Location: Rochester, MN
 Date: April 17, 2012

**PUC Docket #
E002/TL-09-1448**

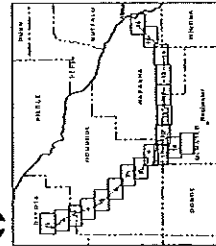
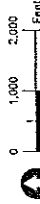
Hampden - Rochester - La Crosse 345 kV Transmission Project

Sheet Map 17 of 19



Legend

- Anticipated Alignment
- 345 kV Anticipated Alignment
- 181 kV Anticipated Alignment
- Route
- Existing Utility
- 69 kV Transmission Line
- 115 kV Transmission Line
- 181 kV Transmission Line
- 345 kV Transmission Line
- Transportation
- Incorporate Highway
- US Highway
- State Highway
- Jurisdiction
- City/Township
- MN DNR Wildlife Management Area
- USFWS National Wildlife Refuge
- Minnesota State Trail
- Parcel



MAP DATE: JAN 11, 2012
 DATA SOURCE: VECTOR, WEDG, RPL, UGA
 PROJECT NUMBER: 09-1448
 PROJECT TITLE: 345 kV TRANSMISSION PROJECT
 DRAWING NUMBER: 09-1448-19

RUC Docket #
E002/FL-09-1448

Hampton - Rochester - La Crosse 345 kV Transmission Project

Sheet Map 19 of 19

CERTIFICATE OF SERVICE

I, Margie DeLaHunt, hereby certify that I have this day, served a true and correct copy of the following document to all persons at the addresses indicated below or on the attached list by electronic filing, electronic mail, courier, interoffice mail or by depositing the same enveloped with postage paid in the United States mail at St. Paul, Minnesota.

**Minnesota Public Utilities Commission
ORDER ISSUING ROUTE PERMIT AS AMENDED**

Docket Number E-002/TL-09-1448
Dated this 30th day of May, 2012

/s/ Margie DeLaHunt

First Name	Last Name	Email	Company Name	Address	Delivery Method	View Trade Secret	Service List Name
Lisa	Agrimonti	lagrimonti@briggs.com	Briggs And Morgan, P.A.	2200 IDS Center 80 South 8th Street Minneapolis, MN 55402	Electronic Service	No	OFF_SL_9-1448_CC-SL1
Julia	Anderson	Julia.Anderson@ag.state.mn.us	Office of the Attorney General-DOC	1800 BRM Tower 445 Minnesota St St. Paul, MN 55102134	Electronic Service	Yes	OFF_SL_9-1448_CC-SL1
Sharon	Ferguson	sharon.ferguson@state.mn.us	Department of Commerce	85 7th Place E Ste.500 Saint Paul, MN 55102198	Electronic Service	Yes	OFF_SL_9-1448_CC-SL1
Burl W.	Haar	burl.haar@state.mn.us	Public Utilities Commission	Suite 350 121 7th Place East St. Paul, MN 55102147	Electronic Service	Yes	OFF_SL_9-1448_CC-SL1
Karen Finstad	Hammel	Karen.Hammel@ag.state.mn.us	Office of the Attorney General-DOC	1800 BRM Tower 445 Minnesota Street St. Paul, MN 55102134	Electronic Service	Yes	OFF_SL_9-1448_CC-SL1
Valerie	Herring	vherring@briggs.com	Briggs and Morgan, P.A.	2200 IDS Center 80 S. Eighth Street Minneapolis, MN 55402	Electronic Service	No	OFF_SL_9-1448_CC-SL1
Tori	Hillstrom		Xcel Energy	7th Floor 414 Nicollet Mall Minneapolis, MN 554011993	Paper Service	No	OFF_SL_9-1448_CC-SL1
Timothy	Keane	tjk@mglmip.com	Malikerson Gunn Martin LLP	1900 U.S. Bank Plaza South Tower 220 South Sixth Street Minneapolis, MN 55402	Electronic Service	No	OFF_SL_9-1448_CC-SL1
Phillip	Krass	prk@mglmip.com	Malikerson Gunn Martin LLP	1900 US Bank Plaza 220 South Sixth Street Minneapolis, MN 55402	Electronic Service	No	OFF_SL_9-1448_CC-SL1
Brian	Mejor	brian.mejor@leonard.com	Leonard, Street & Deinard	150 S 5th St Ste 2300 Minneapolis, MN 55402	Electronic Service	No	OFF_SL_9-1448_CC-SL1

First Name	Last Name	Email	Company Name	Address	Delivery Method	View Trade Secret	Service List Name
Rachel	Myers	rm@mgmlp.com	Malkerson Gunn Martin LLP	1900 U.S. Bank Plaza South Tower 220 South Sixth Street Minneapolis, MN 55402	Electronic Service	No	OFF_SL_9-1448_CC-SL1
Carol A.	Overland	overland@legalelectric.org	Legalelectric - Overland Law Office	1110 West Avenue Red Wing, MN 55066	Paper Service	No	OFF_SL_9-1448_CC-SL1
David	Seykora	dave.seykora@state.mn.us	MN Department of Transportation	395 John Ireland Boulevard Mail Stop 130 St. Paul, MN 55155-1899	Electronic Service	Yes	OFF_SL_9-1448_CC-SL1
Janet	Shaddix Elling	jshaddix@janetshaddix.com	Shaddix And Associates	Ste 122 9100 W Bloomington Bloomington, MN 55431	Electronic Service Frwy	Yes	OFF_SL_9-1448_CC-SL1
Kathleen D.	Sheehy	kathleen.sheehy@state.mn.us	Office of Administrative Hearings	PO Box 64620 St. Paul, MN 551640620	Paper Service	Yes	OFF_SL_9-1448_CC-SL1
SaGonna	Thompson	Regulatory.Records@xcelenergy.com	Xcel Energy	414 Nicollet Mail FL 7 Minneapolis, MN 554011993	Electronic Service	No	OFF_SL_9-1448_CC-SL1